

Table 8.1 Population by Sex and Labor Force Status: 1920–2006

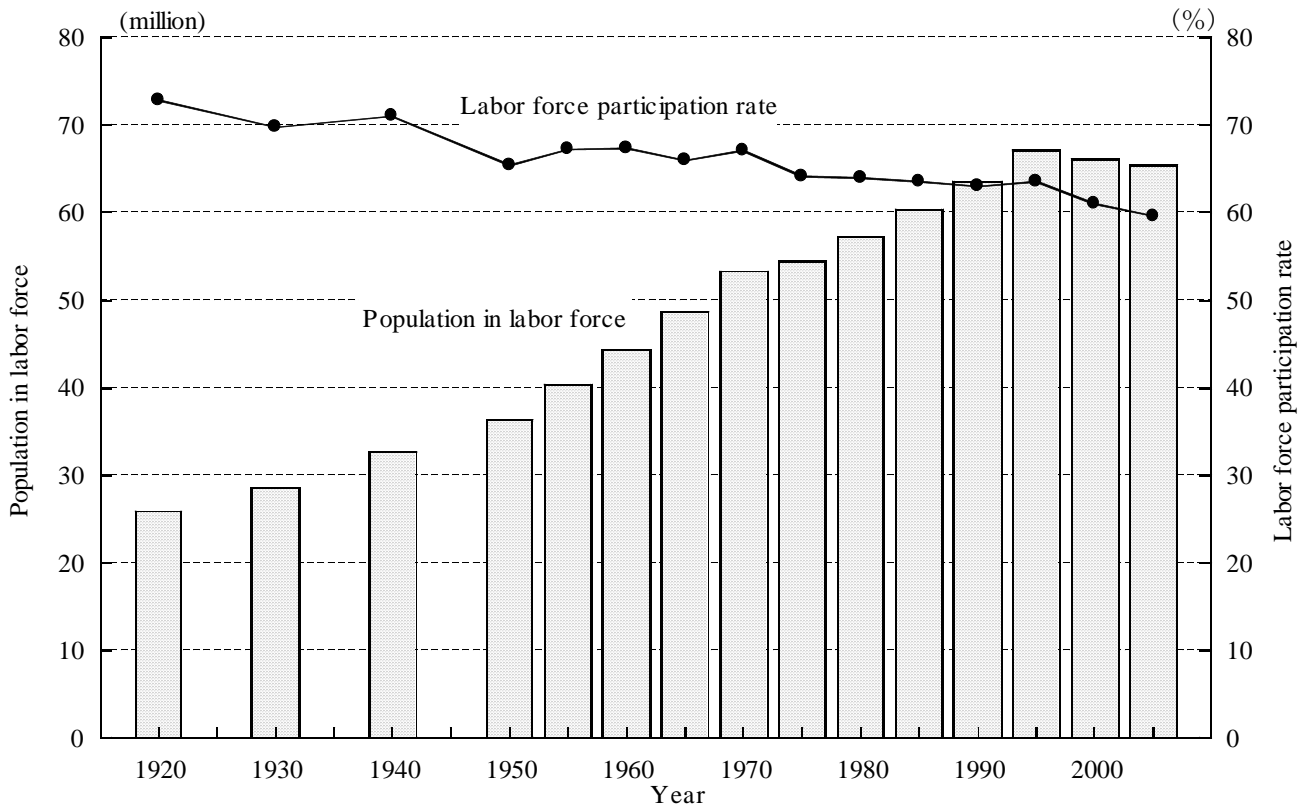
Year	Population 15 years of age and over (thousands)					Proportion (%)			
	Total	Labor force			Not in labor force	Labor force			Not in labor force
		Total	Employed	Unemployed		Total	Employed	Unemployed	
Total									
1920	35,547	25,866	9,681	72.8	27.2
1930	40,871	28,548	12,323	69.8	30.2
1940	45,914	32,661	13,253	71.1	28.9
1950 ¹⁾	55,584	36,347	35,626	722	19,234	65.4	64.1	1.3	34.6
1960	65,352	44,028	43,691	337	21,313	67.4	66.9	0.5	32.6
1970	78,897	52,948	52,235	713	25,944	67.1	66.2	0.9	32.9
1975	84,673	54,390	53,141	1,249	30,283	64.2	62.8	1.5	35.8
1980	89,482	57,231	55,811	1,420	32,099	64.0	62.4	1.6	35.9
1985	94,974	60,391	58,357	2,033	34,407	63.6	61.4	2.1	36.2
1990	100,799	63,595	61,682	1,914	36,786	63.1	61.2	1.9	36.5
1995	105,426	67,018	64,142	2,876	37,881	63.6	60.8	2.7	35.9
2000	108,225	66,098	62,978	3,120	40,386	61.1	58.2	2.9	37.3
2005	109,764	65,400	61,506	3,894	41,008	59.6	56.0	3.5	37.4
2006 [*]	110,200	66,570	63,820	2,750	43,550	60.4	57.9	2.5	39.5
Male									
1920	17,735	16,350	1,385	92.2	7.8
1930	20,495	18,548	1,948	90.5	9.5
1940	22,697	20,450	2,247	90.1	9.9
1950 ¹⁾	26,785	22,365	21,870	495	4,419	83.5	81.7	1.8	16.5
1960	31,542	26,822	26,595	228	4,716	85.0	84.3	0.7	15.0
1970	38,227	32,241	31,768	473	5,983	84.3	83.1	1.2	15.7
1975	41,112	34,306	33,415	891	6,806	83.4	81.3	2.2	16.6
1980	43,442	35,647	34,647	999	7,744	82.1	79.8	2.3	17.8
1985	46,131	37,072	35,679	1,393	8,964	80.4	77.3	3.0	19.4
1990	48,956	38,523	37,245	1,277	10,183	78.7	76.1	2.6	20.8
1995	51,239	40,397	38,529	1,868	10,490	78.8	75.2	3.6	20.5
2000	52,503	39,250	37,249	2,001	12,080	74.8	70.9	3.8	23.0
2005	53,086	38,290	35,735	2,555	12,568	72.1	67.3	4.8	23.7
2006 [*]	53,270	38,980	37,300	1,680	14,250	73.2	70.0	3.2	26.8
Female									
1920	17,812	9,516	8,295	53.4	46.6
1930	20,375	10,000	10,375	49.1	50.9
1940	23,217	12,211	11,006	52.6	47.4
1950 ¹⁾	28,798	13,982	13,755	227	14,815	48.6	47.8	0.8	51.4
1960	33,810	17,206	17,097	109	16,597	50.9	50.6	0.3	49.1
1970	40,669	20,708	20,468	240	19,961	50.9	50.3	0.6	49.1
1975	43,561	20,084	19,726	358	23,477	46.1	45.3	0.8	53.9
1980	46,040	21,584	21,164	421	24,355	46.9	46.0	0.9	52.9
1985	48,843	23,319	22,678	641	25,443	47.7	46.4	1.3	52.1
1990	51,842	25,073	24,436	636	26,603	48.4	47.1	1.2	51.3
1995	54,186	26,621	25,613	1,009	27,391	49.1	47.3	1.9	50.5
2000	55,721	26,848	25,729	1,118	28,307	48.2	46.2	2.0	50.8
2005	56,679	27,110	25,771	1,339	28,440	47.8	45.5	2.4	50.2
2006 [*]	56,930	27,590	26,520	1,070	29,300	48.5	46.6	1.9	51.5

Source: Statistics Bureau, Ministry of Public Management, Home Affairs, Posts and Telecommunications, *Population Census of Japan*.

* Data from Report on the *Labour Force Survey*.

1) The population aged 14 and over. Excluding Okinawa Prefecture.

Figure 8.1 Population in the Labor Force and Labor Force Participation Rates: 1920–2005



See the notes for Table 8.1.

Table 8.2 Labor Force Participation Rates by Age and Sex: 1960–2005

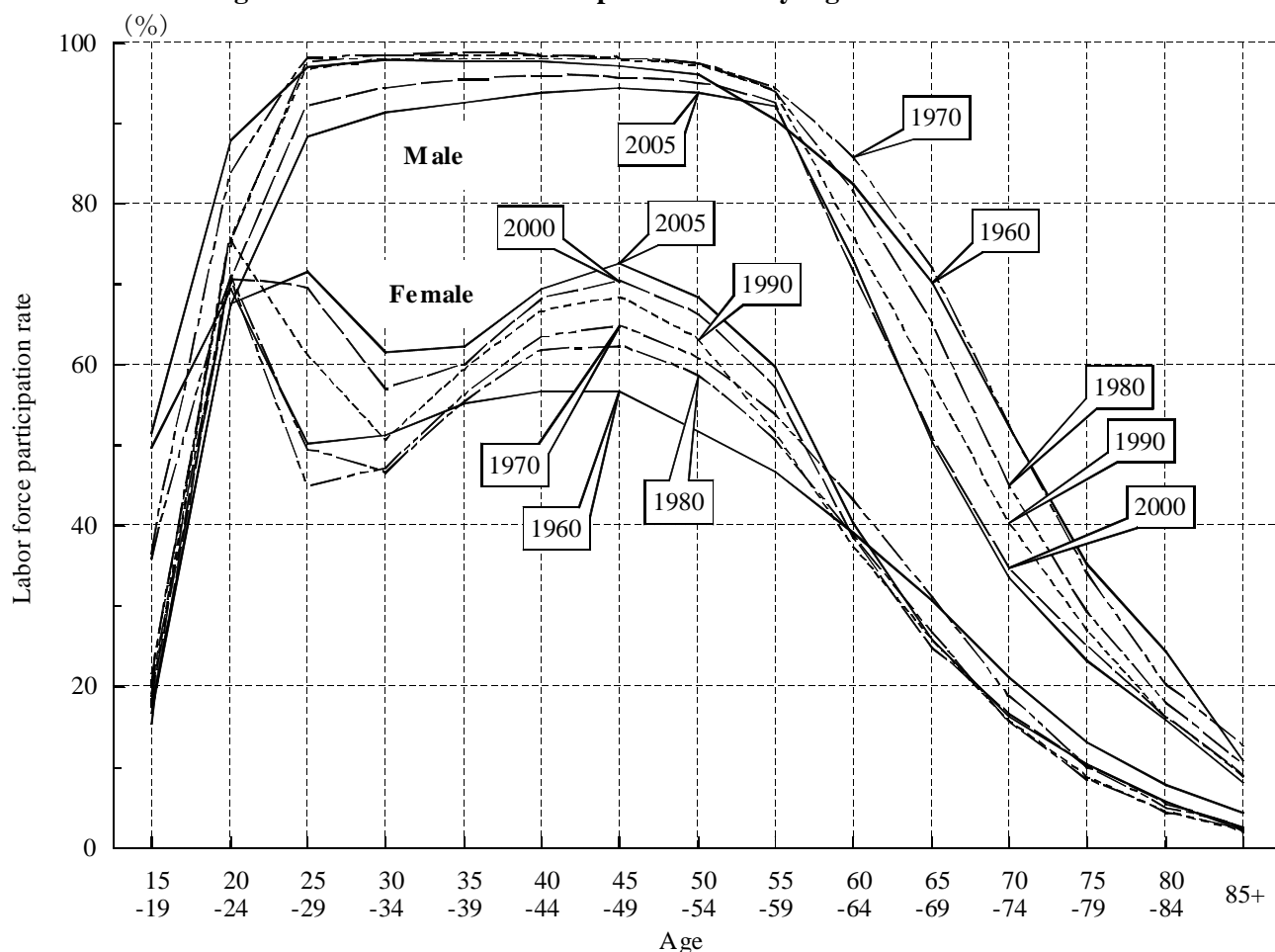
(%)

Age	Male						Female					
	1960 ¹⁾	1970 ²⁾	1980	1990	2000	2005	1960 ¹⁾	1970 ²⁾	1980	1990	2000	2005
Total	85.0	84.4	82.1	78.7	74.8	72.1	50.9	50.9	46.9	48.4	48.2	47.8
15–19	51.6	36.6	20.3	19.9	17.4	17.4	49.7	35.9	18.8	17.4	15.4	16.8
20–24	87.9	83.6	74.7	75.4	70.2	67.5	69.4	70.8	71.1	75.5	70.5	67.7
25–29	96.9	98.2	97.6	96.7	92.1	88.3	50.1	44.9	49.4	61.2	69.6	71.6
30–34	97.8	98.6	98.6	98.1	94.5	91.4	51.3	47.1	46.5	50.7	57.0	61.6
35–39	97.7	98.5	98.7	98.1	95.5	92.6	55.1	56.3	55.5	59.4	60.0	62.3
40–44	97.7	98.3	98.4	98.1	95.9	93.7	56.7	63.6	61.8	66.7	68.2	69.5
45–49	97.1	98.1	98.0	97.9	95.5	94.4	56.8	64.7	62.3	68.3	70.3	72.7
50–54	96.0	97.4	97.3	97.1	95.0	93.8	51.7	60.8	58.7	63.0	66.2	68.3
55–59	90.5	94.2	94.0	94.0	92.6	92.2	46.7	53.8	50.7	51.5	57.1	59.7
60–64	82.5	85.8	81.5	76.1	71.6	73.1	39.1	43.2	38.8	37.4	38.6	40.4
65–69	70.2	72.0	65.2	57.9	50.9	50.3	30.6	31.0	26.7	25.9	24.7	25.9
70–74	52.3	52.5	45.0	40.3	34.6	33.6	21.1	18.9	15.5	15.7	16.5	16.3
75–79	35.2	34.1	29.3	27.0	24.9	23.2	13.0	9.9	8.4	8.7	10.0	10.4
80–84	24.2	20.2	17.9	16.1	16.0	15.8	7.8	4.9	4.3	4.3	5.3	5.6
85 and over	10.8	12.7	10.1	8.8	9.0	8.1	4.2	2.5	2.0	1.9	2.3	2.1

Source: Statistics Bureau, Ministry of Public Management, Home Affairs, Posts and Telecommunications, *Population Census of Japan*. The total is the rate to the population aged 15 and over.

- 1) 1% sampling tabulation.
- 2) 20% sampling tabulation.

Figure 8.2 Labor Force Participation Rates by Age and Sex: 1960–2005



See the notes for Table 8.2.

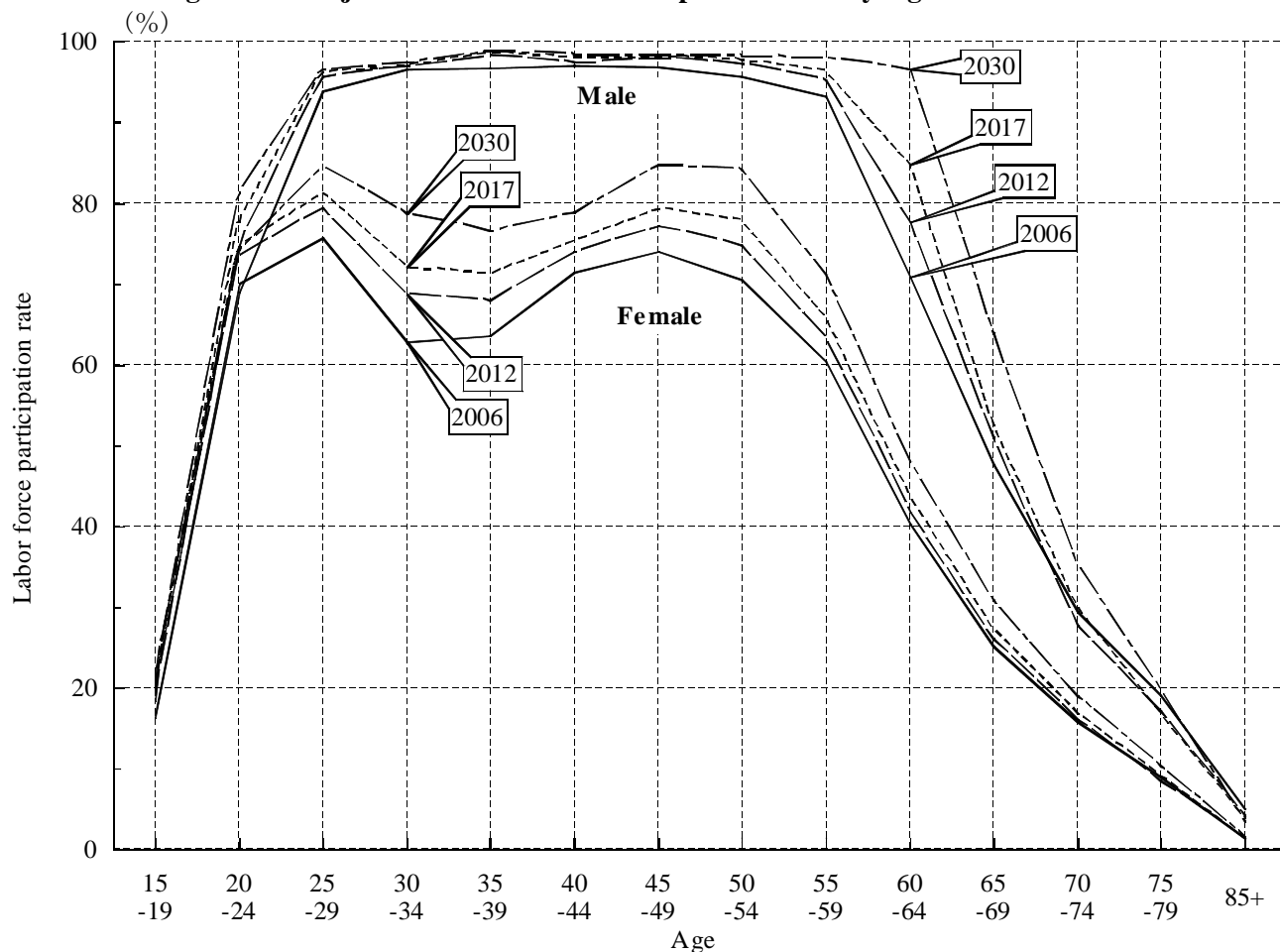
Table 8.3 Projected Labor Force Participation Rates by Age and Sex: 2006–30

(%)

Age	Total				Male				Female			
	2006	2012	2017	2030	2006	2012	2017	2030	2006	2012	2017	2030
Total	60.4	59.9	59.4	59.4	73.2	72.2	71.3	71.4	48.5	48.4	48.5	48.5
15–19	16.5	18.8	20.0	20.7	16.4	18.4	19.4	20.0	16.6	19.2	20.6	21.4
20–24	69.6	74.2	76.3	77.8	69.1	74.8	77.8	81.3	70.1	73.5	74.8	74.2
25–29	85.0	87.8	88.9	90.7	93.9	95.7	96.3	96.6	75.7	79.4	81.2	84.5
30–34	79.9	83.1	85.0	88.3	96.5	97.0	97.2	97.5	62.8	68.7	72.1	78.7
35–39	80.3	83.2	85.1	87.9	96.7	98.2	98.7	98.9	63.6	67.9	71.2	76.6
40–44	84.3	85.8	86.8	88.7	97.0	97.5	98.0	98.4	71.4	74.0	75.4	78.8
45–49	85.4	87.5	88.7	91.7	96.9	97.9	98.2	98.4	74.0	77.1	79.2	84.8
50–54	83.1	86.0	87.8	91.1	95.7	97.3	97.8	98.2	70.5	74.8	77.8	84.1
55–59	76.5	79.0	80.9	84.4	93.2	95.1	96.3	97.9	60.3	63.3	65.9	71.1
60–64	55.1	59.3	63.7	71.6	70.9	77.6	84.8	96.6	40.2	41.8	43.7	47.9
65–69	35.8	38.0	39.3	46.7	47.6	51.0	52.5	63.9	25.1	26.0	27.2	30.8
70–74	21.9	21.5	22.9	26.5	29.4	27.7	29.9	35.2	15.6	16.0	16.7	18.9
75–79	13.2	12.3	12.5	14.5	19.0	17.1	16.8	19.7	8.9	8.5	9.1	10.2
80–84	7.3	6.3	6.1	6.7	12.1	10.1	9.4	9.7	4.4	3.7	3.8	4.5
85 and over	2.3	2.2	2.1	2.2	4.9	4.2	3.8	3.4	1.4	1.3	1.2	1.5

Source: Employment Security Bureau, Ministry of Health, Labour and Welfare (November 2007). The total is of the population aged 15 and over.

Figure 8.3 Projected Labor Force Participation Rates by Age and Sex: 2006–30



See the notes for Table 8.3.

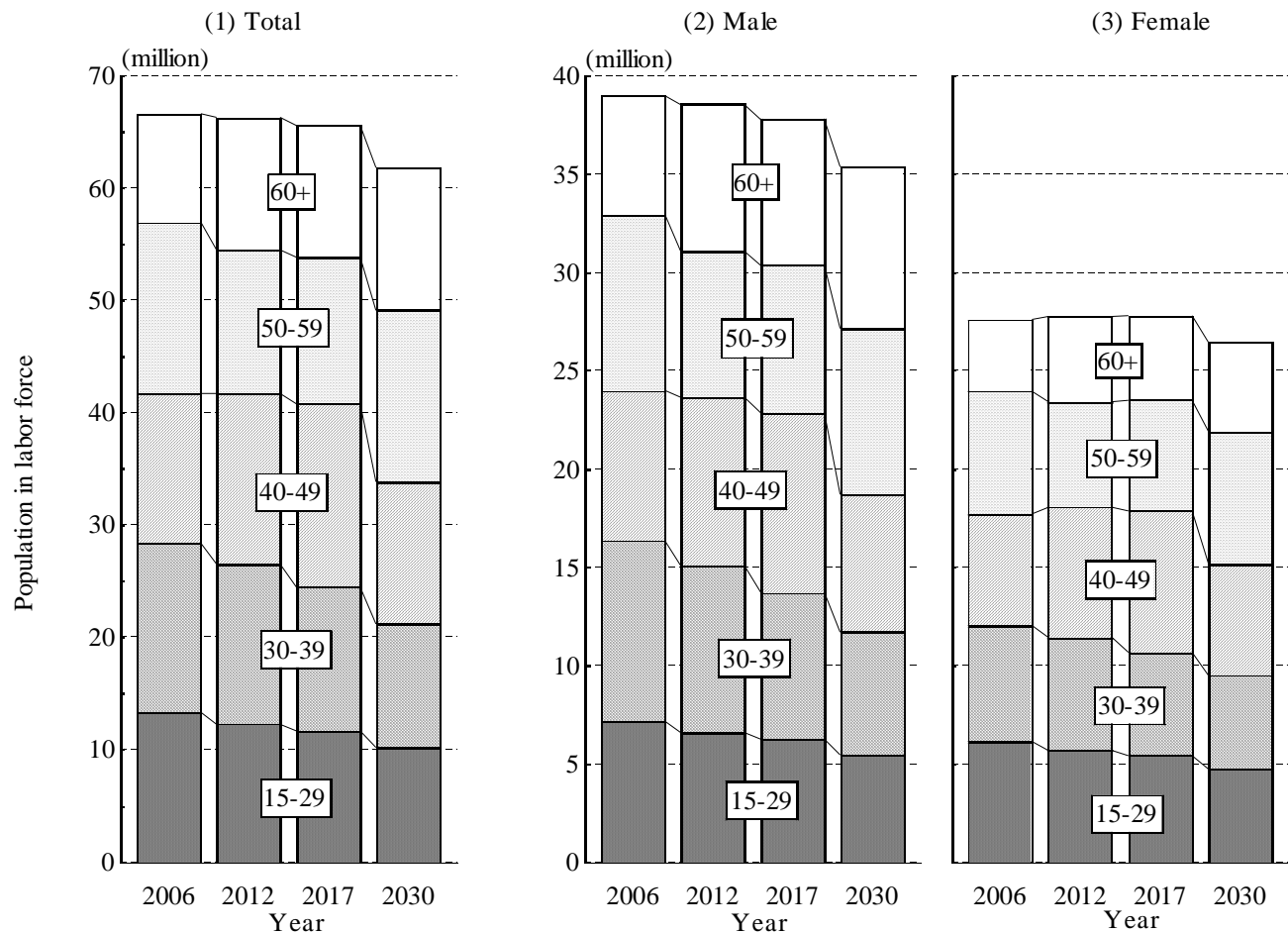
Table 8.4 Projected Population in the Labor Force by Age and Sex: 2006–30

(10, 000)

Age	Total				Male				Female			
	2006	2012	2017	2030	2006	2012	2017	2030	2006	2012	2017	2030
Total	6, 657	6, 628	6, 556	6, 180	3, 898	3, 852	3, 778	3, 537	2, 759	2, 776	2, 777	2, 643
15–19	106	113	118	90	54	57	59	45	52	56	59	45
20–24	519	474	470	399	264	245	245	213	255	229	225	186
25–29	704	638	575	530	398	358	319	288	306	281	256	242
30–34	775	647	618	549	474	383	362	309	301	264	255	240
35–39	733	777	660	550	445	463	387	315	288	314	273	235
40–44	676	805	805	595	391	460	457	336	285	345	348	260
45–49	657	714	826	670	373	400	457	363	284	314	369	307
50–54	702	656	706	735	403	369	392	395	299	286	314	340
55–59	819	623	605	788	493	371	355	452	326	252	250	336
60–64	446	600	489	586	278	383	317	386	168	217	172	201
65–69	269	309	383	342	170	199	245	225	99	110	138	117
70–74	148	158	175	177	91	94	107	110	57	63	69	67
75–79	71	76	83	101	44	46	49	62	27	30	34	39
80–84	26	29	32	48	16	19	20	29	10	10	12	19
85 and over	7	10	12	18	4	6	7	10	3	4	5	9

Source: Employment Security Bureau, Ministry of Health, Labour and Welfare (November 2007). The total is of the population aged 15 and over.

Figure 8.4 Projected Population in the Labor Force by Age and Sex: 2006–30



See the notes for Table 8.4.

Table 8.5 Employed Persons by Industry: 1920–2005

Year	Number of employed persons (1, 000)				Proportion (%)		
	Total ¹⁾	Primary industry	Secondary industry	Tertiary industry	Primary industry	Secondary industry	Tertiary industry
1920	27, 261	14, 672	5, 598	6, 464	53. 8	20. 5	23. 7
1930	29, 620	14, 711	6, 002	8, 836	49. 7	20. 3	29. 8
1940	32, 483	14, 392	6, 443	9, 429	44. 3	26. 0	29. 0
1950	36, 025	17, 478	7, 838	10, 671	48. 5	21. 8	29. 6
1955	39, 590	16, 291	9, 247	14, 051	41. 1	23. 4	35. 5
1960	44, 042	14, 389	12, 804	16, 841	32. 7	29. 1	38. 2
1965	47, 960	11, 857	15, 115	20, 969	24. 7	31. 5	43. 7
1970	52, 593	10, 146	17, 897	24, 511	19. 3	34. 0	46. 6
1975	53, 141	7, 347	18, 106	27, 521	13. 8	34. 1	51. 8
1980	55, 811	6, 102	18, 737	30, 911	10. 9	33. 6	55. 4
1985	58, 357	5, 412	19, 334	33, 444	9. 3	33. 1	57. 3
1990	61, 682	4, 391	20, 548	36, 421	7. 1	33. 3	59. 0
1995	64, 142	3, 820	20, 247	39, 642	6. 0	31. 6	61. 8
2000	62, 978	3, 173	18, 571	40, 485	5. 0	29. 5	64. 3
2005	61, 506	2, 966	16, 065	41, 329	4. 8	26. 1	67. 2

Source: Statistics Bureau, Ministry of Public Management, Home Affairs, Posts and Telecommunications, *Population Census of Japan*. The classification of three major industries follows. Primary industry: agriculture, forestry, fisheries. Secondary industry: mining, construction, manufacturing. Tertiary industry: electricity, gas, heat supply and water, transport and communications, wholesale and retail trade, eating and drinking places, financing and insurance, real estate, services, government (not elsewhere classified).

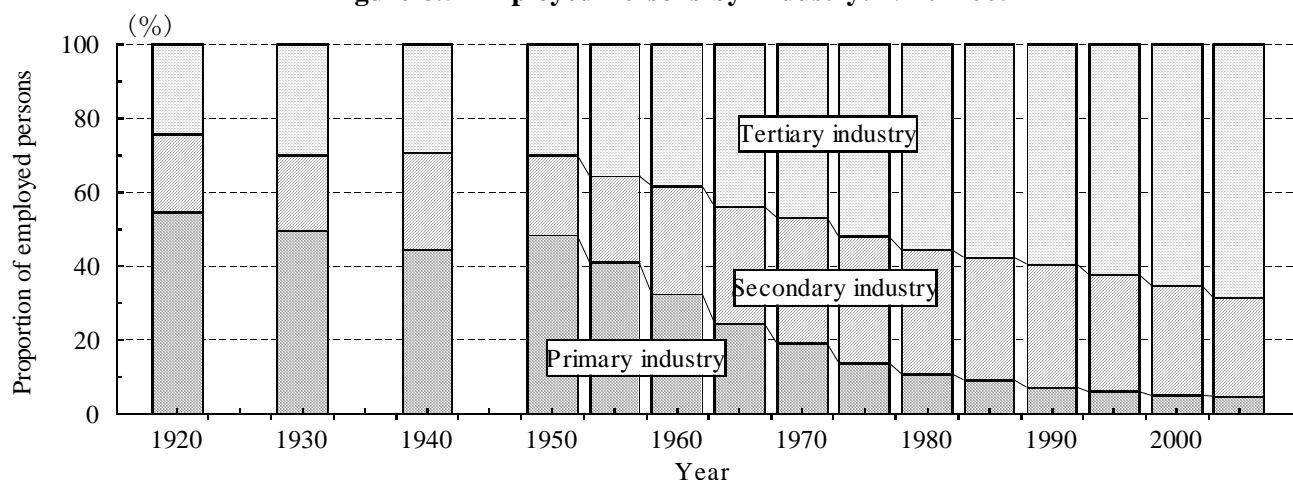
1) Including "not classifiable".

Table 8.6 Employed Persons by Sex and Industry: 2005

Industry (major groups)	Number of employed persons (1, 000persons)			Proportion (%)		
	Total	Male	Female	Total	Male	Female
Total	61, 506	35, 735	25, 771	100. 0	100. 0	100. 0
Agriculture	2, 703	1, 514	1, 189	4. 4	4. 2	4. 6
Forestry	47	40	7	0. 1	0. 1	0. 0
Fisheries	216	163	53	0. 4	0. 5	0. 2
Mining	27	23	4	0. 0	0. 1	0. 0
Construction	5, 392	4, 604	788	8. 8	12. 9	3. 1
Manufacturing	10, 646	7, 165	3, 482	17. 3	20. 0	13. 5
Electricity, gas, heat supply and water	280	245	35	0. 5	0. 7	0. 1
Information and communications	1, 624	1, 198	427	2. 6	3. 4	1. 7
Transport	3, 133	2, 604	528	5. 1	7. 3	2. 1
Wholesale and retail trade	11, 018	5, 466	5, 552	17. 9	15. 3	21. 5
Finance and insurance	1, 538	737	801	2. 5	2. 1	3. 1
Real estate	860	531	329	1. 4	1. 5	1. 3
Eating and drinking places, accommodations	3, 223	1, 303	1, 921	5. 2	3. 6	7. 5
Medical, health care and welfare	5, 353	1, 234	4, 119	8. 7	3. 5	16. 0
Education, learning support	2, 702	1, 212	1, 490	4. 4	3. 4	5. 8
Compound services	679	443	237	1. 1	1. 2	0. 9
Services not elsewhere classified	8, 820	4, 985	3, 835	14. 3	13. 9	14. 9
Government not elsewhere classified	2, 098	1, 587	511	3. 4	4. 4	2. 0
Establishments not adequately described	1, 146	681	465	1. 9	1. 9	1. 8

Source: Statistics Bureau, Ministry of Public Management, Home Affairs, Posts and Telecommunications, *Population Census of Japan*. The population aged 15 and over.

Figure 8.5 Employed Persons by Industry: 1920–2005



See the notes for Table 8.5.

Table 8.7 Employed Persons by Age, Sex, and Industry: 1975–2005

(%)

Age	Male						Female					
	1975	1980	1990	1995	2000	2005	1975	1980	1990	1995	2000	2005
Primary industry												
Total	11.2	9.3	6.5	5.6	4.8	4.8	18.3	13.7	8.1	6.5	5.4	4.8
15–19	5.7	3.8	1.4	1.3	1.5	1.3	1.8	0.9	0.3	0.3	0.4	0.4
20–24	4.7	3.6	1.3	1.0	1.2	1.5	3.3	1.6	0.4	0.3	0.4	0.4
25–29	4.1	3.7	1.7	1.1	1.1	1.4	8.2	5.6	1.5	0.7	0.5	0.6
30–34	4.4	3.8	2.5	1.6	1.2	1.2	12.6	7.5	4.0	2.1	1.2	0.9
35–39	7.2	4.0	3.3	2.3	1.7	1.4	16.9	8.5	4.8	3.5	2.2	1.4
40–44	11.0	6.5	3.3	3.0	2.4	1.9	20.8	12.1	4.3	3.9	3.0	2.0
45–49	14.5	10.0	3.5	3.1	3.0	2.6	25.7	17.0	5.4	3.8	3.6	2.9
50–54	17.0	13.6	5.8	3.3	3.2	3.4	28.8	23.3	9.6	5.3	3.9	4.0
55–59	21.0	17.6	9.9	5.9	3.6	3.9	32.1	28.1	17.1	10.3	6.2	4.9
60–64	26.0	25.0	19.9	14.4	9.8	7.0	36.8	32.7	29.0	21.5	14.9	10.0
65 and over	35.4	33.4	32.0	30.5	27.5	25.7	40.5	36.7	35.0	34.8	32.5	29.3
Secondary industry												
Total	39.0	38.1	38.0	37.2	35.9	33.0	25.7	26.1	26.1	23.2	20.2	16.6
15–19	48.8	42.8	44.6	41.8	35.9	29.4	35.2	29.4	25.6	18.4	14.2	10.6
20–24	41.5	36.1	37.5	37.0	34.6	29.8	25.8	21.5	22.8	19.6	15.1	11.7
25–29	40.3	37.9	35.9	37.1	36.6	33.1	24.9	23.3	21.5	20.4	18.0	14.1
30–34	43.1	39.4	35.3	35.7	36.9	35.1	28.1	27.9	23.3	21.1	19.7	16.9
35–39	43.4	42.6	38.4	35.4	35.6	35.4	30.2	31.2	27.8	22.2	19.9	17.6
40–44	41.1	43.1	40.0	38.4	35.3	34.0	29.7	32.4	29.9	25.2	20.3	17.0
45–49	36.8	41.1	43.0	39.7	38.2	33.6	26.1	30.7	31.6	27.0	22.6	17.0
50–54	36.0	36.8	43.3	42.3	39.1	35.9	23.2	25.7	31.6	28.7	24.2	18.9
55–59	33.9	35.0	40.7	42.1	40.6	36.0	19.7	21.5	27.2	28.0	25.3	20.5
60–64	30.4	29.8	32.2	35.3	34.6	32.3	16.2	17.7	19.8	21.7	21.4	18.7
65 and over	22.1	22.3	22.3	22.7	23.4	21.7	11.8	12.9	14.3	13.7	13.8	12.8
Tertiary industry												
Total	49.6	52.5	55.0	56.7	58.2	60.3	55.5	60.0	65.2	69.5	73.2	76.8
15–19	45.0	53.1	52.2	55.4	58.9	65.9	62.6	69.6	72.2	79.4	81.0	85.7
20–24	53.5	60.2	60.0	60.8	61.6	65.8	70.5	76.7	75.9	79.0	82.3	85.4
25–29	55.4	58.2	61.8	61.0	61.0	63.1	66.3	71.0	76.4	78.0	80.0	83.1
30–34	52.3	56.7	61.8	62.1	60.7	61.6	58.6	64.4	72.2	76.1	77.8	80.2
35–39	49.3	53.4	58.0	61.8	61.7	61.3	52.3	60.1	67.0	73.7	76.8	79.3
40–44	47.7	50.2	56.3	58.1	61.5	62.5	49.0	55.3	65.3	70.3	75.7	79.6
45–49	48.5	48.7	53.1	56.7	58.0	62.3	47.8	52.2	62.5	68.5	72.8	78.8
50–54	46.8	49.6	50.5	54.0	56.9	59.3	47.5	50.9	58.3	65.3	70.8	75.8
55–59	45.0	47.3	49.0	51.6	55.0	58.6	47.6	50.3	55.3	61.0	67.5	73.3
60–64	43.4	45.0	47.6	49.8	54.7	58.9	46.5	49.4	50.9	56.2	62.7	69.6
65 and over	42.2	44.2	45.2	46.2	48.2	50.2	46.9	50.0	50.2	50.7	52.5	55.4

Source: Statistics Bureau, Ministry of Public Management, Home Affairs, Posts and Telecommunications, *Population Census of Japan*. The total is the population aged 15 and over.

Table 8.8 Employed Persons by Occupation: 1950–2005

Occupation	1950 ²⁾	1960	1970 ³⁾	1980	1990	1995	2000	2005
Number of employed persons (1, 000)								
Total ¹⁾	36, 025	44, 042	52, 468	55, 811	61, 682	64, 142	62, 978	61, 506
Agriculture, forestry and fisheries	17, 292	14, 321	10, 085	6, 049	4, 342	3, 807	3, 149	2, 940
Production, transport, etc.	9, 101	14, 503	19, 359	20, 340	21, 493	21, 470	20, 691	19, 498
Sales and service	4, 521	7, 548	10, 153	12, 739	14, 331	15, 693	16, 049	16, 132
Clerical work, technical work, managers, etc.	5, 080	7, 663	12, 852	16, 621	21, 198	22, 780	22, 352	21, 828
Proportion (%)								
Total ¹⁾	100. 0	100. 0	100. 0	100. 0	100. 0	100. 0	100. 0	100. 0
Agriculture, forestry and fisheries	48. 0	32. 5	19. 2	10. 8	7. 0	5. 9	5. 0	4. 8
Production, transport, etc.	25. 3	32. 9	36. 9	36. 4	34. 8	33. 5	32. 9	31. 7
Sales and service	12. 5	17. 1	19. 4	22. 8	23. 2	24. 5	25. 5	26. 2
Clerical work, technical work, managers, etc.	14. 1	17. 4	24. 5	29. 8	34. 4	35. 5	35. 5	35. 5

The population aged 15 and over as of October 1 of each year from the Statistics Bureau, Ministry of Public Management, Home Affairs, Posts and Telecommunications, *Population Census of Japan*.

1) Including "not classifiable".

2) Employed persons aged 14 and over. Excluding Okinawa Prefecture.

3) 20% sampling tabulation.

Table 8.9 Employed Persons by Employment Status: 1950–2005

Year	Number of employed persons (1, 000)				Proportion (%)		
	Total ¹⁾	Employees	Self-employed	Family workers	Employees	Self-employed	Family workers
1950 ²⁾	36, 025	14, 159	9, 446	12, 395	39. 3	26. 2	34. 4
1960	44, 042	23, 730	9, 748	10, 560	53. 9	22. 1	24. 0
1965	47, 960	29, 101	9, 437	9, 351	60. 7	19. 7	19. 5
1970	52, 593	33, 764	10, 248	8, 577	64. 2	19. 5	16. 3
1975	53, 141	36, 718	9, 414	6, 945	69. 1	17. 7	13. 1
1980	55, 811	39, 764	9, 543	6, 495	71. 2	17. 1	11. 6
1985	58, 357	43, 990	8, 970	5, 393	75. 4	15. 4	9. 2
1990	61, 682	48, 607	8, 305	4, 764	78. 8	13. 5	7. 7
1995	64, 142	52, 076	7, 815	4, 243	81. 2	12. 2	6. 6
2000	62, 978	52, 281	7, 186	3, 507	83. 0	11. 4	5. 6
2005	61, 506	51, 673	6, 745	3, 080	84. 0	11. 0	5. 0

Source: Statistics Bureau, Ministry of Public Management, Home Affairs, Posts and Telecommunications, *Population Census of Japan*. The total is of the employed persons aged 15 and over.

1) Including cases for which employed status was not reported.

2) Employed persons aged 14 and over.

Table 8.10 Employee Rates to Employed Persons by Age and Sex: 1975–2005

(%)

Age	Male						Female					
	1975	1980	1990	1995	2000	2005	1975	1980	1990	1995	2000	2005
Total	75. 0	76. 4	81. 1	82. 3	83. 5	83. 7	60. 0	64. 2	75. 4	79. 4	82. 4	84. 5
15–19	90. 3	91. 1	94. 5	95. 4	96. 1	97. 1	95. 9	96. 2	97. 2	97. 8	98. 0	98. 6
20–24	89. 2	90. 8	94. 5	95. 6	96. 2	96. 6	90. 8	93. 5	96. 8	97. 7	98. 1	98. 4
25–29	86. 8	88. 1	93. 4	94. 1	94. 7	95. 0	72. 4	78. 7	91. 6	94. 6	96. 1	96. 8
30–34	82. 6	83. 7	90. 1	91. 6	92. 2	92. 6	56. 4	64. 5	81. 2	87. 7	91. 6	93. 5
35–39	77. 3	80. 5	85. 9	88. 6	90. 1	90. 4	54. 2	62. 5	77. 8	83. 5	88. 1	90. 8
40–44	72. 7	76. 5	82. 7	84. 9	87. 6	88. 9	54. 7	61. 8	76. 4	82. 0	86. 3	89. 6
45–49	71. 0	73. 2	81. 2	82. 3	84. 3	86. 6	52. 0	59. 8	74. 1	79. 2	84. 0	87. 8
50–54	67. 8	71. 7	78. 3	81. 1	82. 0	83. 5	47. 3	54. 0	69. 5	75. 3	79. 9	84. 4
55–59	60. 9	65. 9	74. 1	77. 9	80. 5	81. 0	41. 9	46. 3	61. 3	69. 1	74. 5	79. 3
60–64	52. 2	53. 5	61. 3	65. 4	68. 7	72. 8	34. 8	37. 9	45. 8	54. 7	60. 3	67. 2
65 and over	39. 7	39. 1	41. 8	45. 4	46. 0	47. 1	24. 8	26. 6	31. 1	34. 6	36. 7	40. 4

Source: Statistics Bureau, Ministry of Public Management, Home Affairs, Posts and Telecommunications, *Population Census of Japan*. The total is of employed persons aged 15 and over.

Table 8.11 Population in the Labor Force by Age, Sex and Marital Status: 2005

Age	Population 15 years of age and over (thousands)	Labor force (thousands)			Proportion		
		Total	Employed	Employees	Total	Employed	Employees
Never married							
Male							
Total	16,686	11,117	9,674	8,922	66.6	58.0	53.5
15-19	3,361	578	486	472	17.2	14.4	14.0
20-24	3,509	2,303	2,011	1,945	65.6	57.3	55.4
25-29	2,999	2,556	2,280	2,171	85.2	76.0	72.4
30-34	2,322	1,982	1,760	1,631	85.4	75.8	70.2
35-39	1,321	1,211	1,058	956	91.7	80.1	72.4
40-44	896	809	699	617	90.3	78.0	68.9
45-49	663	585	496	423	88.2	74.8	63.9
50-54	615	519	428	353	84.3	69.6	57.4
55-59	499	389	311	251	77.8	62.3	50.2
60-64	242	129	98	74	53.2	40.6	30.7
65 and over	260	58	46	29	22.3	17.8	11.1
Female							
Total	13,147	8,022	7,269	6,966	61.0	55.3	53.0
15-19	3,168	527	458	452	16.6	14.5	14.3
20-24	3,189	2,260	2,049	2,022	70.9	64.2	63.4
25-29	2,409	2,074	1,898	1,856	86.1	78.8	77.0
30-34	1,541	1,290	1,172	1,125	83.7	76.0	73.0
35-39	797	692	623	587	86.9	78.3	73.7
40-44	484	405	366	338	83.7	75.7	69.7
45-49	317	251	227	204	79.4	71.9	64.6
50-54	271	196	177	155	72.5	65.4	57.3
55-59	269	179	161	136	66.4	59.7	50.4
60-64	185	77	69	53	41.7	37.5	28.3
65 and over	517	71	67	39	13.7	13.0	7.5
Currently married							
Male							
Total	32,260	25,193	24,313	19,642	78.1	75.4	60.9
15-19	12	10	8	8	81.9	70.9	67.8
20-24	234	220	208	199	94.2	89.1	85.3
25-29	1,152	1,107	1,077	1,019	96.1	93.5	88.5
30-34	2,495	2,420	2,370	2,195	97.0	95.0	88.0
35-39	2,760	2,692	2,640	2,391	97.5	95.6	86.6
40-44	2,858	2,799	2,750	2,453	98.0	96.2	85.9
45-49	2,898	2,846	2,792	2,428	98.2	96.3	83.8
50-54	3,383	3,312	3,224	2,700	97.9	95.3	79.8
55-59	4,087	3,934	3,775	3,061	96.3	92.4	74.9
60-64	3,487	2,666	2,448	1,775	76.5	70.2	50.9
65 and over	8,897	3,189	3,021	1,412	35.8	34.0	15.9
Female							
Total	32,323	15,635	15,277	12,218	48.4	47.3	37.8
15-19	25	7	6	6	28.4	23.7	22.4
20-24	373	149	138	131	39.9	36.9	35.0
25-29	1,560	754	718	677	48.4	46.0	43.4
30-34	3,025	1,456	1,403	1,279	48.1	46.4	42.3
35-39	3,135	1,710	1,663	1,480	54.5	53.0	47.2
40-44	3,111	2,054	2,010	1,782	66.0	64.6	57.3
45-49	3,108	2,206	2,167	1,887	71.0	69.7	60.7
50-54	3,572	2,376	2,334	1,945	66.5	65.3	54.4
55-59	4,103	2,347	2,303	1,787	57.2	56.1	43.5
60-64	3,341	1,280	1,254	793	38.3	37.5	23.7
65 and over	6,970	1,297	1,281	452	18.6	18.4	6.5

Source: Statistics Bureau, Ministry of Public Management, Home Affairs, Posts and Telecommunications, *Population Census of Japan*. The proportion to the population aged 15 and over.

Table 8.12 Establishments and Persons Engaged by Industry: 2001, 2006

Industry (major groups)	Establishments			Persons engaged		
	2006		2001	2006		2001
	Number	Proportion (%)	Number	Number	Proportion (%)	Number
Total	5,911,038	100.0	6,349,969	58,634,315	100.0	60,157,509
Agriculture, forestry and fisheries	21,677	0.4	21,523	248,459	0.4	251,382
Mining	3,026	0.1	3,770	33,527	0.1	47,117
Construction	548,861	9.3	606,944	4,144,037	7.1	4,943,615
Manufacturing	548,442	9.3	643,353	9,921,885	16.9	10,955,761
Electricity, Gas, Heat Supply and Water	9,079	0.2	10,378	282,688	0.5	323,711
Information and Communications	59,436	1.0	60,103	1,592,643	2.7	1,465,996
Transport	130,911	2.2	139,007	2,914,126	5.0	2,975,043
Wholesale and Retail Trade	1,604,688	27.1	1,807,284	12,400,519	21.1	13,315,805
Finance and Insurance	84,107	1.4	96,732	1,429,413	2.4	1,638,016
Real Estate	320,365	5.4	328,633	1,014,844	1.7	1,003,335
Eating and Drinking Places, Accommodations	788,263	13.3	869,549	4,875,468	8.3	5,116,583
Medical, Health Care and Welfare	351,129	5.9	297,888	5,588,153	9.5	4,528,545
Education, Learning Support	231,758	3.9	232,030	2,939,730	5.0	2,812,939
Compound Services	49,043	0.8	54,436	706,584	1.2	753,356
Services, not elsewhere classified	1,118,554	18.9	1,132,669	8,690,128	14.8	8,149,012
Government, not elsewhere classified	41,699	0.7	45,670	1,852,111	3.2	1,877,293

Source: Statistics Bureau, Ministry of Public Management, Home Affairs, Posts and Telecommunications, *Establishment and Enterprise Census*.

Table 8.13 Foreigners by Sex, Nationality and Labor Force Status: 2000, 2005

(1,000 persons)

Labor force status	2000					2005				
	Total ¹⁾	Korea	China	Brazil	Philippines	Total ¹⁾	Korea	China	Brazil	Philippines
Total										
Total	1,157	467	227	158	88	1,409	422	323	178	115
Labor force	727	279	128	133	45	837	251	195	147	68
Employed	685	256	122	129	42	772	223	182	140	63
Mostly worked	590	212	99	123	34	652	180	149	131	48
Worked besides doing housework	65	33	10	5	8	82	32	15	7	14
Worked besides attending school	20	6	11	0	0	25	5	15	0	0
Absent from work	10	5	2	1	0	13	5	3	1	1
Unemployed	42	23	7	4	2	65	29	13	7	5
Not in labor force	387	178	90	20	40	417	160	113	23	43
Male										
Total	543	217	98	88	14	652	190	126	99	19
Labor force	419	162	66	81	11	450	142	86	89	16
Employed	395	148	63	79	11	414	125	79	85	15
Mostly worked	374	140	55	78	10	389	117	70	83	14
Worked besides doing housework	4	2	0	1	0	5	2	1	1	0
Worked besides attending school	11	3	6	0	0	13	3	8	0	0
Absent from work	6	3	1	1	0	7	3	1	1	0
Unemployed	24	14	4	2	1	36	17	6	4	1
Not in labor force	96	49	25	3	1	102	43	32	4	2
Female										
Total	614	250	130	70	74	757	232	197	79	96
Labor force	307	117	62	52	33	387	110	109	58	52
Employed	290	108	59	50	32	358	98	103	55	48
Mostly worked	216	72	43	45	23	264	63	80	47	33
Worked besides doing housework	61	31	10	4	8	77	31	14	6	14
Worked besides attending school	9	3	5	0	0	12	3	7	0	0
Absent from work	4	2	1	1	0	6	2	2	1	1
Unemployed	18	9	3	2	2	29	11	6	3	4
Not in labor force	291	129	65	17	38	315	117	81	19	41

Source: Statistics Bureau, Ministry of Public Management, Home Affairs, Posts and Telecommunications, *Population Census of Japan*. The total is of the foreigners aged 15 and over. 1) Including other nationalities not tabulated.

Table 8.14 Foreigners by Age, Sex and Labor Force Status: 2000, 2005

Age	2000					2005				
	Total	Labor force		Not in labor force	Labor force participation ratio (%)	Total	Labor force		Not in labor force	Labor force participation ratio (%)
		Total	Employed				Total	Employed		
Male										
15 and over	543	419	395	96	77.2	652	450	414	102	69.1
15-19	34	11	10	22	32.0	34	10	8	20	30.7
20-24	63	44	41	16	69.8	85	51	46	21	60.2
25-29	83	67	63	13	79.9	100	71	66	14	70.6
30-34	82	70	66	9	84.9	92	70	65	8	76.0
35-39	71	63	60	5	88.3	78	63	59	4	80.7
40-44	51	46	44	3	90.5	64	54	50	3	83.4
45-49	42	38	36	2	90.5	47	39	36	2	83.5
50-54	36	32	30	2	88.7	41	33	30	2	81.3
55-59	26	22	21	2	85.5	36	27	25	2	76.0
60-64	18	13	12	4	72.8	25	17	15	4	65.7
65 and over	36	14	12	18	38.2	50	15	14	22	30.9
Female										
15 and over	614	307	290	291	50.0	757	387	358	315	51.1
15-19	34	10	9	23	29.5	35	12	10	21	33.2
20-24	74	47	44	25	63.5	103	62	58	32	60.2
25-29	99	54	51	43	54.7	115	65	61	41	56.6
30-34	102	48	46	52	47.4	110	58	53	45	52.4
35-39	81	40	38	39	49.5	101	52	48	43	52.0
40-44	57	32	30	25	55.1	79	44	40	31	55.4
45-49	44	26	25	17	58.9	57	33	30	21	58.0
50-54	34	20	19	13	59.5	43	25	23	16	57.2
55-59	26	14	13	11	54.4	33	18	16	13	52.5
60-64	20	8	8	11	41.8	25	10	10	12	41.9
65 and over	43	8	7	33	17.6	56	9	8	41	15.9

Source: Statistics Bureau, Ministry of Public Management, Home Affairs, Posts and Telecommunications, Population Census of Japan. The total includes the category of "Labor force status not reported."

Table 8.15 Registered Foreigners by Resident Status by Occupation or School: 1959-2006

Year	Total ¹⁾	Employed ²⁾	Study abroad (collage, university, etc.)	Entering school (learning Japanese) ³⁾	Training
1959	8,302	7,533	769
1964	11,077	8,615	2,462
1974	18,372	12,660	5,712
1984	50,660	28,696	14,172	3,522	4,270
1986	80,016	39,241	20,456	15,144	5,175
1988	136,458	50,750	29,154	47,827	8,727
1990	165,542	67,983	48,715	35,595	13,249
1992	207,707	85,517	56,309	46,644	19,237
1993	217,335	95,376	60,110	44,418	17,431
1994	222,089	105,616	61,515	37,653	17,305
1995	200,835	87,996	60,685	34,441	17,713
1996	208,491	98,301	59,228	30,079	20,883
1997	220,470	107,298	58,271	29,095	25,806
1998	236,443	118,996	59,648	30,691	27,108
1999	251,543	125,726	64,646	34,541	26,630
2000	305,708	154,748	76,980	37,781	36,199
2001	342,332	168,783	93,614	41,766	38,169
2002	376,319	179,639	110,415	47,198	39,067
2003	406,090	185,556	125,597	50,473	44,464
2004	419,522	192,124	129,873	43,208	54,317
2005	392,327	180,505	129,568	28,147	54,107
2006	417,810	178,781	131,789	36,721	70,519

Source: Ministry of Justice, *Statistics on the Foreigners Registered in Japan*.

1) The total is the sum of figures for Employed, College Student, Pre-college Student, and Trainee.

2) Foreigners whose status of residence is Professor, Artist, Religious Activities, Journalism, Investor, Business Manager, Legal/Accounting Services, Medical Services, Researcher, Instructor, Engineer, Specialist in Humanities, International services, Intra-company Transferee, Entertainer, and Skilled Laborer.

3) School qualification is the qualification for students who study at miscellaneous vocational schools such as Japanese language institutions.