

**Table 6.1 Marriages by Previous Marital Status of Bride and Groom, Percentage of First Marriages, and Crude Marriage Rates: 1883–2006**

Year	Total number of marriages	Groom		Bride		Percentage of First Marriages (%)		Crude marriage rate (per 1,000 population)
		First marriage	Remarriage	First marriage	Remarriage	Groom	Bride	
1883	337,456	...	...	...	...	...	...	9.0
1890	325,141	...	...	...	...	...	...	8.1
1900	346,528	...	...	...	...	...	...	7.9
1910	441,222	368,111	69,975	390,466	47,838	83.4	88.5	9.0
1920	546,207	453,139	92,280	489,737	55,524	83.0	89.7	9.8
1925	521,438	444,462	76,509	475,931	45,075	85.2	91.3	8.7
1930	506,674	437,094	68,774	465,128	40,524	86.3	91.8	7.9
1935	556,730	485,452	71,137	515,706	40,777	87.2	92.6	8.0
1940	666,575	580,283	85,437	616,735	47,449	87.1	92.5	9.3
1947	934,170	...	...	...	...	...	...	12.0
1950	715,081	...	...	...	...	...	...	8.6
1955	714,861	626,394	88,467	656,591	58,270	87.6	91.8	8.1
1960	866,115	782,021	84,094	812,597	53,518	90.3	93.8	9.3
1965	954,852	872,649	82,203	900,304	54,548	91.4	94.3	9.8
1966	940,120	860,197	79,923	886,108	54,012	91.5	94.3	9.5
1967	953,096	871,919	81,177	897,156	55,940	91.5	94.1	9.6
1968	956,312	876,803	79,509	900,586	55,726	91.7	94.2	9.5
1969	984,142	902,251	81,891	925,538	58,604	91.7	94.0	9.7
1970	1,029,405	943,783	85,622	967,716	61,689	91.7	94.0	10.0
1971	1,091,229	1,003,381	87,848	1,026,772	64,457	91.9	94.1	10.4
1972	1,099,984	1,011,042	88,942	1,032,967	67,017	91.9	93.9	10.4
1973	1,071,923	983,035	88,888	1,002,656	69,267	91.7	93.5	9.9
1974	1,000,455	911,808	88,647	929,824	70,631	91.1	92.9	9.1
1975	941,628	855,825	85,803	871,445	70,183	90.9	92.5	8.5
1976	871,543	787,521	84,022	801,264	70,279	90.4	91.9	7.8
1977	821,029	738,321	82,708	750,756	70,273	89.9	91.4	7.2
1978	793,257	710,875	82,382	722,577	70,680	89.6	91.1	6.9
1979	788,505	704,321	84,184	715,551	72,954	89.3	90.7	6.8
1980	774,702	690,885	83,817	701,415	73,287	89.2	90.5	6.7
1981	776,531	691,448	85,083	702,259	74,272	89.0	90.4	6.6
1982	781,252	693,990	87,262	704,840	76,412	88.8	90.2	6.6
1983	762,552	675,514	87,038	686,477	76,075	88.6	90.0	6.4
1984	739,991	652,618	87,373	663,021	76,970	88.2	89.6	6.2
1985	735,850	646,241	89,609	656,609	79,241	87.8	89.2	6.1
1986	710,962	620,754	90,208	630,353	80,609	87.3	88.7	5.9
1987	696,173	605,675	90,498	615,148	81,025	87.0	88.4	5.7
1988	707,716	613,919	93,797	623,743	83,973	86.7	88.1	5.8
1989	708,316	611,963	96,353	623,485	84,831	86.4	88.0	5.8
1990	722,138	625,453	96,685	637,472	84,666	86.6	88.3	5.9
1991	742,264	645,790	96,474	657,715	84,549	87.0	88.6	6.0
1992	754,441	657,540	96,901	669,760	84,681	87.2	88.8	6.1
1993	792,658	692,214	100,444	704,929	87,729	87.3	88.9	6.4
1994	782,738	681,759	100,979	693,853	88,885	87.1	88.6	6.3
1995	791,888	687,167	104,721	700,158	91,730	86.8	88.4	6.4
1996	795,080	688,887	106,193	701,776	93,304	86.6	88.3	6.4
1997	775,651	670,007	105,644	681,468	94,183	86.4	87.9	6.2
1998	784,595	675,519	109,076	687,552	97,043	86.1	87.6	6.3
1999	762,028	651,925	110,103	664,379	97,649	85.6	87.2	6.1
2000	798,138	678,174	119,964	691,507	106,631	85.0	86.6	6.4
2001	799,999	674,770	125,229	687,683	112,316	84.3	86.0	6.4
2002	757,331	633,543	123,788	645,138	112,193	83.7	85.2	6.0
2003	740,191	613,727	126,464	626,327	113,864	82.9	84.6	5.9
2004	720,417	592,448	127,969	605,935	114,482	82.2	84.1	5.7
2005	714,265	584,076	130,189	599,691	114,574	81.8	84.0	5.7
2006	730,971	593,726	137,245	612,133	118,838	81.2	83.7	5.8

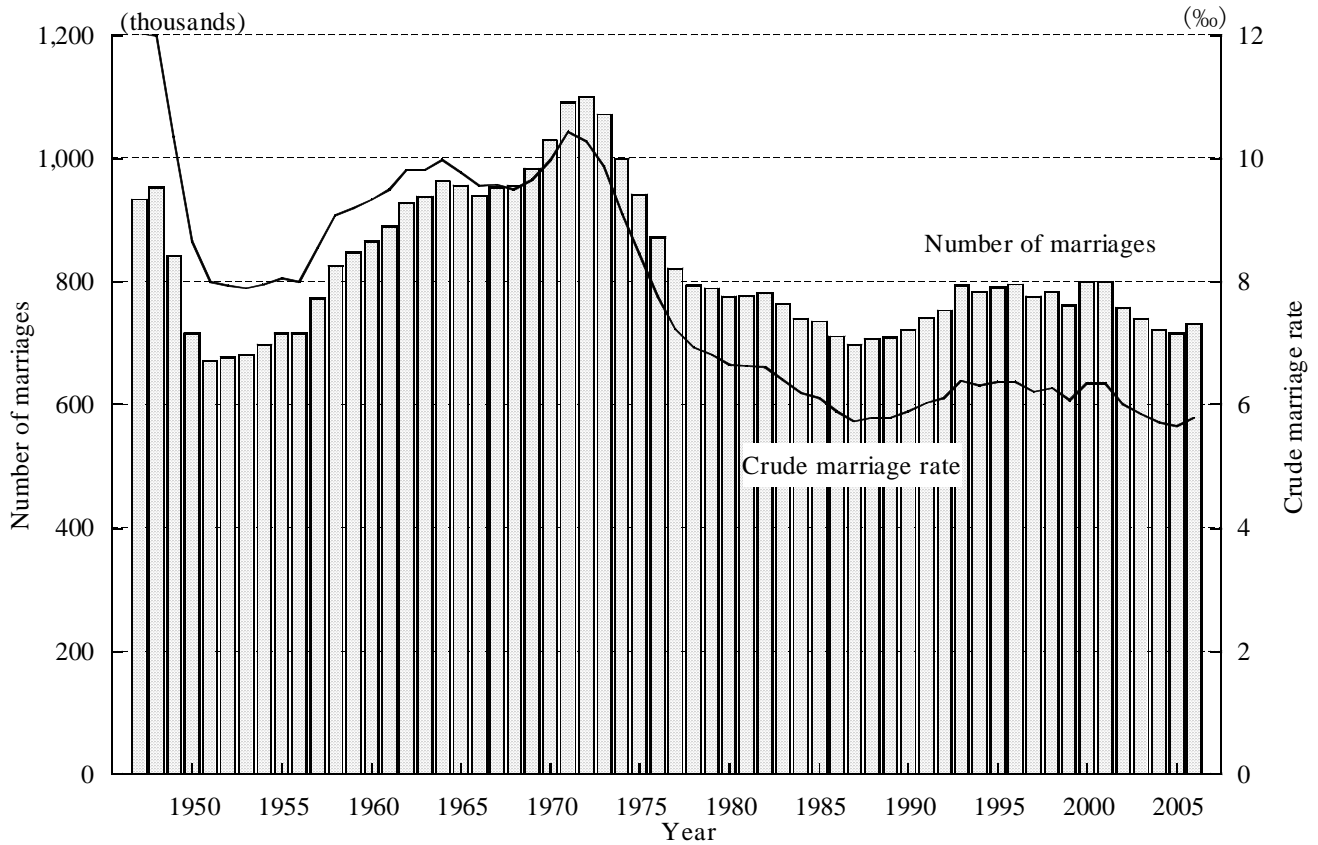
Data for 1883 and 1890 are from the Cabinet Statistics Bureau, *Teikoku Toukei Nenkan*, and for 1900 onwards, from Statistics and Information Department, Ministry of Health, Labour and Welfare, *Vital Statistics of Japan*. The data for 1947–1972 do not include Okinawa Prefecture. The rates were computed with the population as of October 1 (per 1,000 persons as the denominator).

**Table 6.2 Divorces by Legal Type and Crude Divorce Rates: 1883–2006**

Year	Number							Proportion (%)				Crude divorce rate (per 1,000 population) (%)
	Total number of divorces	Divorces by mutual agreement	Divorces by conciliation	Divorces by adjustment	Divorces by compromise	Divorces by acknowledgment of claim	Judicial divorces	Divorces by mutual agreement	Divorces by conciliation	Divorces by adjustment	Judicial divorces	
1883	127,163	...	...	...	...	...	...	...	...	...	...	3.38
1890	109,088	...	...	...	...	...	...	...	...	...	...	2.73
1900	63,828	...	...	...	...	...	...	...	...	...	...	1.46
1910	59,432	59,019	—	—	—	—	413	99.3	—	—	0.7	1.21
1920	55,511	55,061	—	—	—	—	450	99.2	—	—	0.8	1.00
1925	51,687	51,315	—	—	—	—	372	99.3	—	—	0.7	0.87
1930	51,259	50,881	—	—	—	—	378	99.3	—	—	0.7	0.80
1935	48,528	48,134	—	—	—	—	394	99.2	—	—	0.8	0.70
1940	48,556	48,187	—	—	—	—	369	99.2	—	—	0.8	0.68
1947	79,551	79,415	—	—	—	—	136	99.8	—	—	0.2	1.02
1950	83,689	79,955	3,276	25	—	—	433	95.5	3.9	0.0	0.5	1.01
1955	75,267	69,839	4,833	27	—	—	568	92.8	6.4	0.0	0.8	0.85
1960	69,410	63,302	5,413	43	—	—	652	91.2	7.8	0.1	0.9	0.75
1965	77,195	69,599	6,692	41	—	—	863	90.2	8.7	0.1	1.1	0.79
1966	79,432	71,168	7,314	41	—	—	909	89.6	9.2	0.1	1.1	0.81
1967	83,478	74,843	7,719	62	—	—	854	89.7	9.2	0.1	1.0	0.84
1968	87,327	78,181	8,177	85	—	—	884	89.5	9.4	0.1	1.0	0.87
1969	91,280	81,883	8,391	84	—	—	922	89.7	9.2	0.1	1.0	0.90
1970	95,937	85,920	8,960	64	—	—	993	89.6	9.3	0.1	1.0	0.93
1971	103,595	92,892	9,576	57	—	—	1,070	89.7	9.2	0.1	1.0	0.99
1972	108,382	97,068	10,175	69	—	—	1,070	89.6	9.4	0.1	1.0	1.02
1973	111,877	100,353	10,325	69	—	—	1,130	89.7	9.2	0.1	1.0	1.03
1974	113,622	101,988	10,391	50	—	—	1,193	89.8	9.1	0.0	1.0	1.03
1975	119,135	107,138	10,771	54	—	—	1,172	89.9	9.0	0.0	1.0	1.07
1976	124,512	111,207	11,924	39	—	—	1,342	89.3	9.6	0.0	1.1	1.11
1977	129,485	115,733	12,277	54	—	—	1,421	89.4	9.5	0.0	1.1	1.14
1978	132,146	118,212	12,355	40	—	—	1,539	89.5	9.3	0.0	1.2	1.15
1979	135,250	121,063	12,529	42	—	—	1,616	89.5	9.3	0.0	1.2	1.17
1980	141,689	127,379	12,732	46	—	—	1,532	89.9	9.0	0.0	1.1	1.22
1981	154,221	139,233	13,333	31	—	—	1,624	90.3	8.6	0.0	1.1	1.32
1982	163,980	148,253	13,931	31	—	—	1,765	90.4	8.5	0.0	1.1	1.39
1983	179,150	163,607	13,689	54	—	—	1,800	91.3	7.6	0.0	1.0	1.51
1984	178,746	163,209	13,617	63	—	—	1,857	91.3	7.6	0.0	1.0	1.49
1985	166,640	151,918	12,928	59	—	—	1,735	91.2	7.8	0.0	1.0	1.38
1986	166,054	151,079	13,196	50	—	—	1,729	91.0	7.9	0.0	1.0	1.37
1987	158,227	143,735	12,830	39	—	—	1,623	90.8	8.1	0.0	1.0	1.30
1988	153,600	139,296	12,727	48	—	—	1,529	90.7	8.3	0.0	1.0	1.26
1989	157,811	142,612	13,610	51	—	—	1,538	90.4	8.6	0.0	1.0	1.29
1990	157,608	142,623	13,317	44	—	—	1,624	90.5	8.4	0.0	1.0	1.28
1991	168,969	152,963	14,318	76	—	—	1,612	90.5	8.5	0.0	1.0	1.37
1992	179,191	162,654	14,837	72	—	—	1,628	90.8	8.3	0.0	0.9	1.45
1993	188,297	170,413	16,131	65	—	—	1,688	90.5	8.6	0.0	0.9	1.52
1994	195,106	176,547	16,725	72	—	—	1,762	90.5	8.6	0.0	0.9	1.57
1995	199,016	179,844	17,302	66	—	—	1,804	90.4	8.7	0.0	0.9	1.60
1996	206,955	187,856	17,228	72	—	—	1,799	90.8	8.3	0.0	0.9	1.66
1997	222,635	202,431	18,341	81	—	—	1,782	90.9	8.2	0.0	0.8	1.78
1998	243,183	221,761	19,182	76	—	—	2,164	91.2	7.9	0.0	0.9	1.94
1999	250,529	229,126	19,291	77	—	—	2,035	91.5	7.7	0.0	0.8	2.00
2000	264,246	241,703	20,230	85	—	—	2,228	91.5	7.7	0.0	0.8	2.10
2001	285,911	261,631	21,957	81	—	—	2,242	91.5	7.7	0.0	0.8	2.27
2002	289,836	264,430	22,846	74	—	—	2,486	91.2	7.9	0.0	0.9	2.30
2003	283,854	257,361	23,856	61	—	—	2,576	90.7	8.4	0.0	0.9	2.25
2004	270,804	242,680	23,609	152	1,341	14	3,008	90.1	8.7	0.1	1.1	2.14
2005	261,917	233,086	22,906	185	2,476	19	3,245	89.0	8.7	0.1	1.2	2.08
2006	257,475	228,802	22,683	121	2,805	17	3,047	88.9	8.8	0.0	1.2	2.04

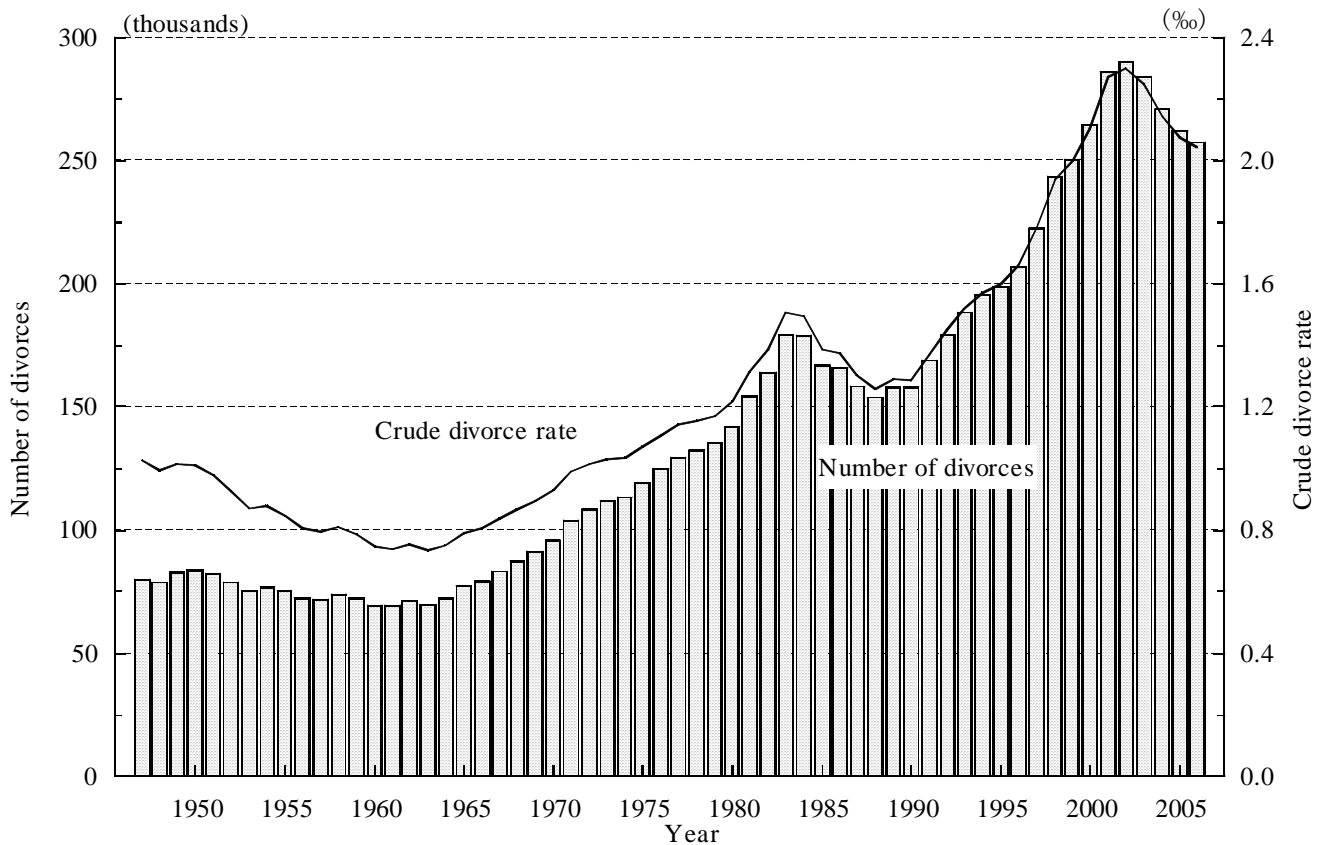
Data for 1883 and 1890 are from the Cabinet Statistics Bureau, *Teikoku Toukei Nenkan*, and for 1900 onwards, from the Statistics and Information Department, Ministry of Health, Labour and Welfare, *Vital Statistics of Japan*. The data for 1947–1972 do not include Okinawa Prefecture. The rates were computed with the population as of October 1 (per 1,000 persons as the denominator).

**Figure 6.1 Marriages and Crude Marriage Rates: 1947–2006**



See the notes for Table 6.1.

**Figure 6.2 Divorces and Crude Divorce Rates: 1947–2006**



See the notes for Table 6.2.

**Table 6.3 First Marriages by Age and Sex: 1930–2006**

Age	1930	1950	1960	1970	1980	1990	2000	2006
<b>Groom</b>								
Total <sup>1)</sup>	437,094	298,124	533,963	799,637	634,352	581,650	614,968	520,171
19 and under	9,829	7,526	2,147	5,811	5,304	7,683	10,745	6,616
20–24	142,925	123,730	122,894	221,545	137,768	118,866	117,347	80,039
25–29	197,496	136,090	327,491	451,864	325,327	274,447	284,162	205,204
30–34	55,599	24,265	71,090	101,083	142,437	129,444	135,078	145,186
35–39	16,052	4,139	7,972	14,377	18,875	37,101	44,912	54,867
40–44	7,128	1,143	1,418	3,196	3,330	10,893	13,490	16,978
45–49	3,687	562	498	853	856	2,225	5,789	6,216
50–54	2,143	309	196	298	270	623	2,453	2,926
55–59	1,219	154	122	129	93	227	659	1,570
60–64	602	81	73	64	33	95	218	375
65–69	248	35	31	35	24	24	72	124
70 and over	166	24	31	37	23	15	37	68
<b>Bride</b>								
Total <sup>1)</sup>	465,128	308,431	553,583	818,316	643,514	592,262	626,764	535,681
19 and under	104,844	50,190	29,426	33,470	20,912	22,327	21,480	15,047
20–24	257,701	196,299	332,839	533,842	328,761	233,032	175,387	120,200
25–29	67,369	50,307	159,303	208,780	238,640	270,575	308,790	235,730
30–34	19,202	7,756	24,031	26,285	41,169	48,641	92,933	120,038
35–39	7,438	2,242	5,600	9,363	8,438	11,320	20,926	34,652
40–44	3,929	816	1,445	4,164	2,757	3,814	4,351	6,953
45–49	2,345	352	537	1,574	1,564	1,415	1,387	1,737
50–54	1,384	187	234	408	828	579	831	648
55–59	595	82	99	147	306	346	382	358
60–64	215	50	30	35	79	155	172	158
65–69	76	16	27	15	29	43	87	81
70 and over	30	13	12	16	19	13	37	72

Figures for 1930 are from the Cabinet Statistics Bureau, *Teikoku Toukei Nenkan*, and for 1950 onwards, from the Statistics and Information Department, Ministry of Health, Labour and Welfare, *Vital Statistics of Japan*. The data for 1950–70 do not include Okinawa Prefecture. Figures are the tabulation of the single year data of first-time married couples who started to live together in the year of registration. 1) Including individuals whose ages were not reported.

**Table 6.4 First Marriage Rates by Age and Sex: 1930–2006**

(‰)

Age	1930	1950	1960	1970	1980	1990	2000	2006
<b>Groom</b>								
Total <sup>1)</sup>	21.33	11.61	17.03	21.04	14.69	11.93	11.84	9.87
19 and under <sup>2)</sup>	2.96	1.75	0.46	1.28	1.26	1.50	2.83	2.03
20–24	50.77	32.45	29.96	41.96	35.04	26.79	27.65	21.89
25–29	79.61	48.79	80.35	100.63	72.08	68.00	58.21	51.74
30–34	25.56	10.40	19.07	24.31	26.43	33.26	31.02	30.29
35–39	8.64	1.76	2.91	3.50	4.13	8.25	11.16	11.93
40–44	4.22	0.52	0.63	0.88	0.80	2.04	3.48	4.30
45–49	2.42	0.28	0.22	0.32	0.21	0.50	1.31	1.63
50–54	1.52	0.18	0.10	0.14	0.08	0.16	0.47	0.70
55–59	1.12	0.11	0.07	0.06	0.04	0.06	0.15	0.29
60–64	0.73	0.07	0.05	0.04	0.02	0.03	0.06	0.10
65–69	0.43	0.04	0.03	0.03	0.01	0.01	0.02	0.03
70 and over	0.22	0.03	0.02	0.02	0.01	0.00	0.01	0.01
<b>Bride</b>								
Total <sup>1)</sup>	22.83	11.10	16.45	20.22	14.05	11.49	11.37	9.54
19 and under <sup>2)</sup>	32.55	11.87	6.40	7.50	5.20	4.59	5.93	4.87
20–24	94.88	50.72	79.82	100.43	85.35	54.40	43.41	34.75
25–29	28.61	15.05	38.89	45.92	53.46	68.66	65.34	61.63
30–34	9.42	2.74	6.40	6.31	7.74	12.73	21.93	25.83
35–39	4.30	0.84	1.72	2.30	1.84	2.55	5.31	7.72
40–44	2.46	0.36	0.53	1.14	0.66	0.72	1.14	1.79
45–49	1.54	0.18	0.21	0.49	0.39	0.31	0.31	0.46
50–54	0.97	0.11	0.11	0.15	0.23	0.14	0.16	0.16
55–59	0.53	0.06	0.05	0.06	0.10	0.09	0.09	0.07
60–64	0.24	0.04	0.02	0.02	0.03	0.04	0.04	0.04
65–69	0.11	0.02	0.02	0.01	0.01	0.01	0.02	0.02
70 and over	0.03	0.01	0.01	0.01	0.00	0.00	0.00	0.01

Figures for 1930 are from the Cabinet Statistics Bureau, *Teikoku Toukei Nenkan*, and for 1950 onwards, from the Statistics and Information Department, Ministry of Health, Labour and Welfare, *Vital Statistics of Japan*. The data for 1950–1970 do not include Okinawa Prefecture. Figures are the tabulation of the single year data of first-time married couples who started to live together in the year of registration. 1) Including those whose age was not reported. The rate to the population aged 15 and over. 2) The rate to the population aged 15–19.

**Table 6.5 Remarriages by Age and Sex: 1930–2006**

Age	1930	1950	1960	1970	1980	1990	2000	2006
<b>Groom</b>								
Total <sup>1)</sup>	68,774	47,920	45,945	55,723	60,095	71,765	93,191	107,431
19 and under	65	81	10	21	13	21	27	22
20–24	2,411	3,716	1,152	1,692	1,148	1,706	2,359	2,029
25–29	11,873	10,083	9,069	10,900	9,353	8,504	12,201	10,281
30–34	14,919	10,505	12,726	13,779	17,979	14,193	20,303	23,192
35–39	12,584	8,737	7,796	10,550	12,146	14,896	17,470	23,412
40–44	9,692	5,854	4,775	6,885	6,755	13,165	11,422	15,281
45–49	6,882	3,901	3,801	4,245	4,836	8,004	9,242	10,097
50–54	4,552	2,342	2,826	2,815	3,382	4,946	8,726	7,689
55–59	2,744	1,303	1,833	2,212	2,083	3,236	5,562	7,547
60–64	1,642	825	1,001	1,286	1,078	1,746	3,011	3,926
65–69	830	351	554	722	705	706	1,536	2,079
70 and over	580	204	401	463	616	642	1,332	1,876
<b>Bride</b>								
Total <sup>1)</sup>	40,524	37,613	26,325	37,044	50,933	61,153	81,395	91,921
19 and under	563	475	90	109	95	130	127	112
20–24	5,960	6,729	3,181	4,655	3,322	3,645	4,023	3,821
25–29	10,214	13,036	7,986	11,618	14,718	12,795	17,628	14,453
30–34	8,106	9,396	6,551	8,263	15,072	14,120	20,760	25,390
35–39	5,265	4,073	4,008	5,253	7,857	11,020	13,616	19,500
40–44	3,803	1,741	1,997	3,164	4,252	8,597	7,449	10,281
45–49	2,845	962	1,243	1,977	2,753	5,515	6,471	6,381
50–54	1,942	584	665	1,001	1,603	2,953	5,733	4,591
55–59	1,083	335	318	518	734	1,414	3,048	4,007
60–64	480	144	165	222	311	603	1,497	1,824
65–69	181	77	81	100	140	236	656	936
70 and over	82	37	40	58	76	125	386	625

Figures for 1930 are from Cabinet Statistics Bureau, *Teikoku Toukei Nenkan* and for 1950 onwards, from the Statistics and Information Department, Ministry of Health, Labour and Welfare, *Vital Statistics of Japan*. The data for 1950–1970 do not include Okinawa Prefecture. Figures are the tabulation of the single year data of remarried couples who started to live together in the year of registration. 1) Including individuals whose ages were not reported.

**Table 6.6 Remarriage Rates by Age and Sex: 1930–2006**

(‰)

Age	1930	1950	1960	1970	1980	1990	2000	2006
<b>Groom</b>								
Total <sup>1)</sup>	3.36	1.87	1.47	1.47	1.39	1.47	1.79	2.04
19 and under <sup>2)</sup>	0.02	0.02	0.00	0.00	0.00	0.00	0.01	0.01
20–24	0.86	0.97	0.28	0.32	0.29	0.38	0.55	0.55
25–29	4.79	3.61	2.23	2.43	2.07	2.11	2.49	2.59
30–34	6.86	4.50	3.41	3.31	3.33	3.65	4.65	4.84
35–39	6.78	3.71	2.85	2.57	2.66	3.31	4.33	5.09
40–44	5.74	2.69	2.12	1.89	1.63	2.47	2.94	3.87
45–49	4.51	1.95	1.70	1.60	1.20	1.79	2.08	2.65
50–54	3.23	1.37	1.39	1.32	0.96	1.24	1.68	1.85
55–59	2.53	0.95	1.02	1.09	0.83	0.86	1.30	1.42
60–64	2.00	0.75	0.70	0.74	0.56	0.54	0.81	1.00
65–69	1.44	0.44	0.54	0.52	0.41	0.32	0.46	0.57
70 and over	0.78	0.22	0.31	0.25	0.22	0.17	0.23	0.25
<b>Bride</b>								
Total <sup>1)</sup>	1.99	1.35	0.78	0.92	1.11	1.19	1.48	1.64
19 and under <sup>2)</sup>	0.17	0.11	0.02	0.02	0.02	0.03	0.04	0.04
20–24	2.19	1.74	0.76	0.88	0.86	0.85	0.99	1.10
25–29	4.34	3.90	1.95	2.56	3.30	3.25	3.73	3.78
30–34	3.98	3.33	1.75	1.98	2.83	3.70	4.89	5.46
35–39	3.05	1.53	1.23	1.29	1.71	2.48	3.45	4.35
40–44	2.38	0.77	0.73	0.86	1.02	1.63	1.95	2.65
45–49	1.87	0.49	0.49	0.62	0.68	1.22	1.47	1.69
50–54	1.37	0.35	0.31	0.38	0.44	0.72	1.10	1.10
55–59	0.96	0.24	0.17	0.22	0.24	0.36	0.69	0.74
60–64	0.53	0.12	0.11	0.11	0.12	0.17	0.38	0.44
65–69	0.27	0.08	0.07	0.06	0.06	0.08	0.18	0.24
70 and over	0.08	0.03	0.02	0.02	0.02	0.02	0.04	0.06

Figures for 1930 are from the Cabinet Statistics Bureau, *Teikoku Toukei Nenkan*, and for 1950 onwards, from the Statistics and Information Department, Ministry of Health, Labour and Welfare, *Vital Statistics of Japan*. The data for 1950–1970 do not include Okinawa Prefecture. For 1930, the total population was used as the denominator for computing the rate; for 1950 onwards, the Japanese population was used. Figures are the tabulation of the single year data of remarried couples who started to live together in the year of registration. 1) Including individuals whose ages were not reported. The rate to the population aged 15 and over. 2) The rate to the population aged 15–19.

**Table 6.7 Divorces by Age and Sex: 1930–2006**

Age	1930	1950	1960	1970	1980	1990	2000	2006
Male								
Total <sup>1)</sup>	51, 259	51, 500	36, 832	55, 968	89, 361	104, 522	194, 122	190, 239
19 and under	345	389	59	134	140	320	683	450
20–24	6, 018	9, 426	3, 257	5, 924	4, 751	7, 410	12, 808	10, 525
25–29	13, 862	15, 364	11, 728	16, 293	17, 333	17, 592	35, 288	26, 358
30–34	10, 964	9, 578	9, 427	13, 406	24, 926	19, 332	39, 040	39, 488
35–39	7, 176	6, 610	4, 824	8, 961	17, 147	18, 346	29, 660	34, 421
40–44	4, 776	4, 239	2, 674	5, 102	10, 722	17, 604	22, 207	24, 985
45–49	3, 259	2, 608	1, 808	2, 467	7, 305	11, 312	19, 789	18, 255
50–54	2, 146	1, 534	1, 196	1, 250	3, 730	6, 359	17, 444	14, 223
55–59	1, 298	845	804	962	1, 624	3, 504	9, 168	11, 676
60 and over	1, 415	888	1, 050	1, 352	1, 682	2, 743	8, 035	9, 858
Female								
Total <sup>1)</sup>	51, 259	51, 500	36, 832	55, 968	89, 361	104, 522	194, 122	190, 239
19 and under	3, 341	2, 604	682	862	797	1, 312	1, 824	1, 566
20–24	14, 685	17, 295	9, 249	13, 747	10, 556	13, 554	19, 815	16, 751
25–29	12, 806	14, 460	11, 288	16, 873	23, 081	23, 730	46, 978	33, 897
30–34	8, 097	7, 620	7, 053	10, 315	22, 824	18, 532	40, 628	44, 177
35–39	4, 744	4, 475	4, 107	6, 578	14, 297	16, 219	27, 290	34, 704
40–44	3, 105	2, 497	2, 083	3, 741	8, 513	14, 779	19, 059	22, 452
45–49	2, 148	1, 304	1, 106	1, 888	5, 049	8, 608	15, 721	14, 573
50–54	1, 242	641	612	946	2, 466	4, 238	12, 291	9, 459
55–59	646	333	318	493	1, 061	2, 094	5, 717	6, 970
60 and over	445	231	333	413	717	1, 456	4, 798	5, 690

Figures for 1930 are from the Cabinet Statistics Bureau, *Teikoku Toukei Nenkan*, and for 1950 onwards, from the Statistics and Information Department, Ministry of Health, Labour and Welfare, *Vital Statistics of Japan*. The data for 1950–1970 do not include Okinawa Prefecture. Figures are the tabulation of the single year data of divorced couples who stopped cohabitation in the year of registration. 1) Including individuals whose ages were not reported.

**Table 6.8 Divorce Rates by Age and Sex: 1930–2006**

(‰)

Age	1930	1950	1960	1970	1980	1990	2000	2006
Husband								
Total <sup>1)</sup>	2.50	2.01	1.17	1.47	2.07	2.14	3.73	3.61
19 and under <sup>2)</sup>	0.10	0.09	0.01	0.03	0.03	0.06	0.18	0.14
20–24	2.14	2.47	0.79	1.12	1.21	1.67	3.01	2.88
25–29	5.59	5.51	2.88	3.63	3.84	4.36	7.21	6.65
30–34	5.04	4.11	2.53	3.22	4.62	4.97	8.94	8.24
35–39	3.86	2.81	1.76	2.18	3.75	4.08	7.35	7.48
40–44	2.83	1.95	1.19	1.40	2.59	3.30	5.72	6.32
45–49	2.14	1.30	0.81	0.93	1.82	2.53	4.46	4.79
50–54	1.52	0.90	0.59	0.58	1.06	1.59	3.36	3.42
55–59	1.20	0.62	0.45	0.47	0.65	0.93	2.14	2.19
60 and over	0.66	0.31	0.28	0.27	0.26	0.30	0.62	0.65
Wife								
Total <sup>1)</sup>	2.52	1.85	1.09	1.38	1.95	2.03	3.52	3.39
19 and under <sup>2)</sup>	1.04	0.62	0.15	0.19	0.20	0.27	0.50	0.51
20–24	5.41	4.47	2.22	2.59	2.74	3.16	4.90	4.84
25–29	5.44	4.33	2.76	3.71	5.17	6.02	9.93	8.86
30–34	3.97	2.70	1.88	2.47	4.29	4.85	9.57	9.50
35–39	2.75	1.68	1.26	1.62	3.12	3.65	6.92	7.73
40–44	1.94	1.10	0.76	1.02	2.05	2.80	4.98	5.79
45–49	1.41	0.66	0.43	0.59	1.25	1.91	3.57	3.86
50–54	0.87	0.39	0.28	0.36	0.68	1.04	2.36	2.27
55–59	0.57	0.24	0.17	0.21	0.34	0.53	1.29	1.28
60 and over	0.17	0.06	0.07	0.07	0.08	0.12	0.29	0.29

Figures for 1930 are from the Cabinet Statistics Bureau, *Teikoku Toukei Nenkan*, and for 1950 onwards, from the Statistics and Information Department, Ministry of Health, Labour and Welfare, *Vital Statistics of Japan*. The data for 1950–1970 do not include Okinawa Prefecture. For 1930, the total population was used as the denominator for computing the ratio, and for 1950 onwards, the Japanese population was used. Figures are the tabulation of the single year data of divorced couples who stopped cohabitation in the year of registration. 1) Including individuals whose ages were not reported. The rate to the population aged 15 and over. 2) The rate to the population aged 15–19.

**Table 6.9 First Marriage Rates by Age of Groom and Bride to Never-Married Persons: 1930–2005**

(%)

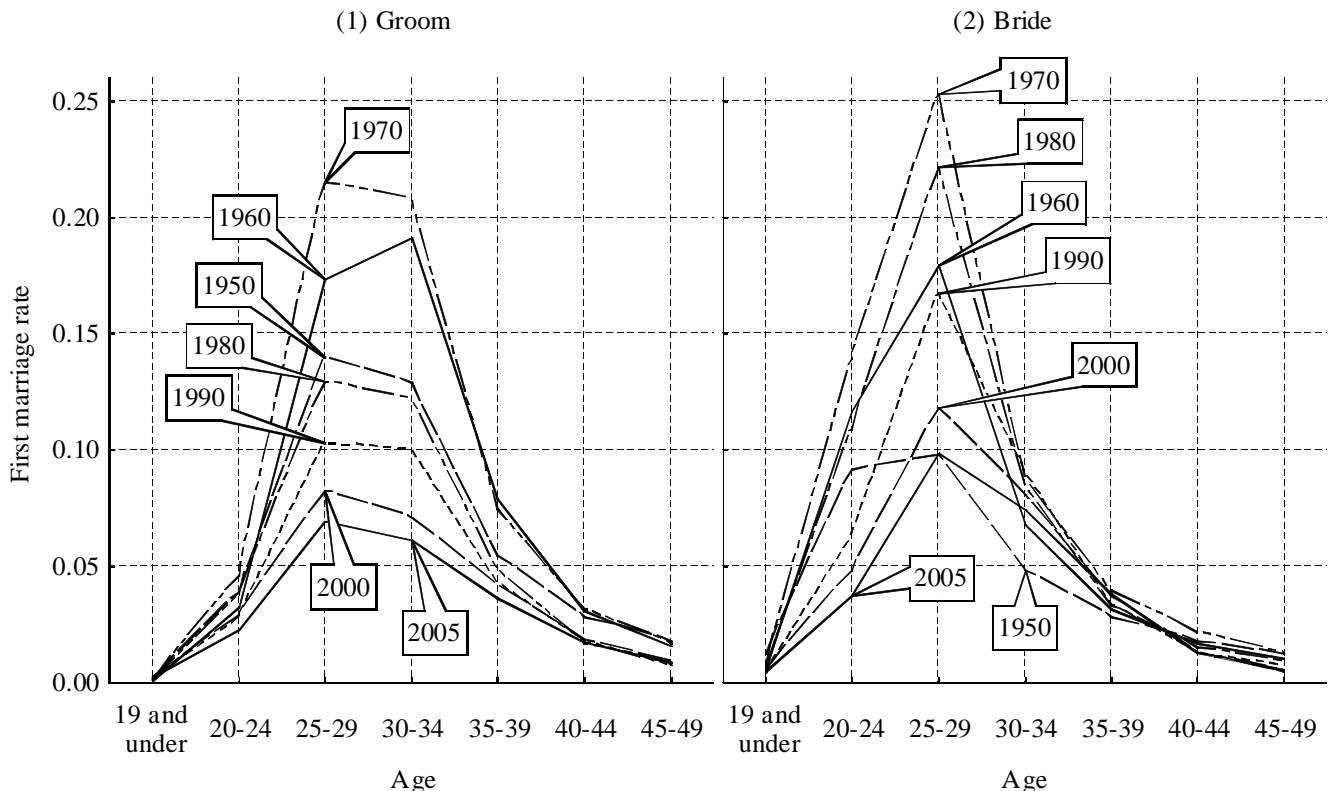
Age	1930	1950	1960	1970	1980	1990	2000	2005
<b>Groom</b>								
Total <sup>1)</sup>	66.09	33.63	48.70	64.69	51.09	37.67	36.39	30.26
19 and under <sup>2)</sup>	2.99	1.75	0.46	1.28	1.26	1.50	2.81	2.01
20–24	63.77	38.92	32.51	46.28	37.88	28.31	29.25	22.60
25–29	277.29	139.85	173.37	215.15	129.47	102.99	82.30	69.30
30–34	317.45	129.10	191.38	207.63	121.89	100.06	70.77	61.54
35–39	220.75	55.04	79.16	74.70	48.06	42.79	41.71	36.29
40–44	173.56	27.82	30.78	31.03	16.86	17.22	18.35	17.23
45–49	130.89	17.98	15.88	16.62	6.84	7.30	8.71	8.83
50–54	100.22	13.25	8.49	9.32	3.62	3.56	4.56	4.62
55–59	81.79	9.05	6.55	5.44	2.39	2.02	2.52	2.54
60–64	62.36	6.06	5.36	3.65	1.44	1.45	1.49	1.53
65–69	42.94	3.44	3.47	2.76	1.52	0.78	0.84	0.71
70 and over	25.21	1.53	2.51	2.19	1.14	0.44	0.48	0.42
<b>Bride</b>								
Total <sup>1)</sup>	107.50	43.02	60.83	80.92	66.74	48.36	47.06	39.73
19 and under <sup>2)</sup>	36.47	12.23	6.44	7.61	5.21	4.60	5.92	4.86
20–24	251.97	91.20	116.26	139.28	108.86	62.47	48.39	37.35
25–29	338.44	98.25	178.96	252.85	221.35	167.36	118.36	98.80
30–34	252.17	47.94	67.83	87.33	84.62	90.50	80.45	74.50
35–39	178.73	27.92	31.27	39.49	33.22	33.54	37.31	37.71
40–44	136.58	17.96	16.70	21.33	14.82	12.41	12.97	13.00
45–49	99.13	12.12	9.96	12.35	8.66	6.79	4.93	5.37
50–54	69.70	9.12	6.56	5.70	5.10	3.47	2.97	2.05
55–59	39.74	5.06	4.23	3.14	2.79	2.09	1.99	1.24
60–64	21.05	3.45	1.82	1.09	1.31	1.04	1.12	0.88
65–69	11.59	1.30	2.33	0.74	0.77	0.43	0.59	0.41
70 and over	3.56	0.69	0.61	0.59	0.44	0.12	0.13	0.15

Refer to the notes for Table 6.3.

1) Including individuals whose ages were not reported. The rate is to the population of never-married men and women aged 15 and over.

2) The rate is to the population of never-married men and women aged 15–19.

**Figure 6.3 First Marriage Rates to Never-Married Persons: 1950–2005**



See the notes for Table 6.9.

**Table 6.10 Remarriage Rates by Age of Groom and Bride to Widowed and Divorced Persons: 1930–2005**

		(‰)							
Age	1930	1950	1960	1970	1980	1990	2000	2005	
<b>Groom</b>									
Total <sup>1)</sup>	48.96	34.11	32.95	41.67	37.63	34.18	32.67	30.69	
19 and under <sup>2)</sup>	34.52	81.57	12.72	9.59	94.72	120.15	38.20	22.96	
20–24	102.93	178.59	203.93	242.45	259.81	272.40	211.68	166.44	
25–29	185.84	236.09	321.50	445.22	348.44	310.45	242.68	213.57	
30–34	200.69	237.59	248.20	322.06	250.37	243.93	215.88	196.25	
35–39	166.44	170.12	151.72	182.50	136.18	135.03	133.72	130.55	
40–44	105.99	86.42	92.19	102.20	66.82	70.83	72.73	71.47	
45–49	57.19	38.04	53.54	63.96	40.67	41.67	40.54	43.43	
50–54	29.79	16.84	27.42	39.05	27.10	25.78	26.92	25.97	
55–59	17.35	7.87	12.02	21.07	18.39	16.05	18.55	17.42	
60–64	10.06	4.23	5.22	8.61	8.96	8.64	10.47	11.05	
65–69	5.39	1.75	2.72	3.66	4.25	3.94	5.18	5.81	
70 and over	1.78	0.55	0.83	0.85	0.93	0.87	1.35	0.83	
<b>Bride</b>									
Total <sup>1)</sup>	11.47	7.49	4.78	6.14	7.42	7.51	8.35	8.24	
19 and under <sup>2)</sup>	39.19	63.75	37.82	8.55	231.52	186.05	75.00	74.95	
20–24	96.46	87.95	144.77	141.00	271.39	193.75	140.49	112.44	
25–29	108.96	68.39	96.69	163.72	218.71	185.20	148.50	128.82	
30–34	71.74	30.12	38.00	69.93	99.69	114.59	107.17	100.88	
35–39	36.42	10.62	14.16	28.07	40.37	49.50	54.66	55.13	
40–44	18.61	4.78	4.75	11.11	16.92	23.67	25.67	26.58	
45–49	9.75	2.42	2.32	4.63	7.88	13.93	15.52	15.42	
50–54	4.97	1.30	1.22	1.70	3.35	6.36	9.40	9.33	
55–59	2.51	0.66	0.52	0.70	1.11	2.32	4.69	4.92	
60–64	1.03	0.24	0.25	0.28	0.36	0.77	1.90	2.29	
65–69	0.42	0.13	0.12	0.12	0.14	0.23	0.63	0.86	
70 and over	0.09	0.03	0.03	0.03	0.03	0.03	0.07	0.06	

Refer to the notes for Table 6.5.

1) Including individuals whose ages were not reported. The rate is to the population of widowed and divorced persons aged 15 and over. 2) The rate is to the population of widowed and divorced persons aged 15–19.

**Table 6.11 Divorce Rates by Age and Sex to Currently Married Persons: 1930–2005**

		(‰)							
Age	1930	1950	1960	1970	1980	1990	2000	2005	
<b>Male</b>									
Total <sup>1)</sup>	4.11	3.30	1.92	2.28	3.03	3.31	5.90	5.86	
19 and under <sup>2)</sup>	10.63	20.63	7.39	4.56	10.11	22.51	40.27	43.34	
20–24	10.93	14.83	9.60	11.42	14.74	26.25	43.37	46.91	
25–29	8.13	8.51	5.39	6.81	8.62	12.54	23.93	23.58	
30–34	5.69	4.50	2.84	3.67	5.95	7.47	15.97	15.86	
35–39	4.20	2.94	1.85	2.31	4.17	5.15	10.23	11.54	
40–44	3.07	2.03	1.23	1.46	2.77	3.87	7.30	8.54	
45–49	2.37	1.38	0.84	0.96	1.93	2.83	5.52	6.38	
50–54	1.74	0.99	0.62	0.61	1.11	1.74	4.00	4.41	
55–59	1.42	0.71	0.49	0.50	0.69	1.01	2.45	2.71	
60 and over	0.96	0.44	0.37	0.33	0.31	0.34	0.72	0.81	
<b>Female</b>									
Total <sup>1)</sup>	4.10	3.28	1.92	2.28	3.02	3.31	5.93	5.90	
19 and under <sup>2)</sup>	10.07	18.85	11.12	10.50	20.75	36.50	58.35	69.65	
20–24	9.00	10.41	7.07	9.28	12.42	22.94	42.45	45.41	
25–29	6.21	5.43	3.59	4.59	6.89	10.26	22.33	22.19	
30–34	4.38	3.22	2.17	2.74	4.84	5.78	13.56	14.74	
35–39	3.08	2.03	1.46	1.80	3.44	4.13	8.49	10.27	
40–44	2.27	1.33	0.93	1.17	2.27	3.18	5.85	7.29	
45–49	1.78	0.84	0.56	0.71	1.43	2.19	4.19	4.85	
50–54	1.23	0.53	0.39	0.48	0.82	1.22	2.83	2.85	
55–59	0.94	0.39	0.26	0.31	0.46	0.66	1.59	1.72	
60 and over	0.53	0.19	0.20	0.17	0.19	0.24	0.54	0.57	

Refer to the notes for Table 6.7.

1) Including individuals whose ages were not reported. The rate is to the population of currently married persons aged 15 and over. 2) The rate is to the population of currently married persons aged 15–19.



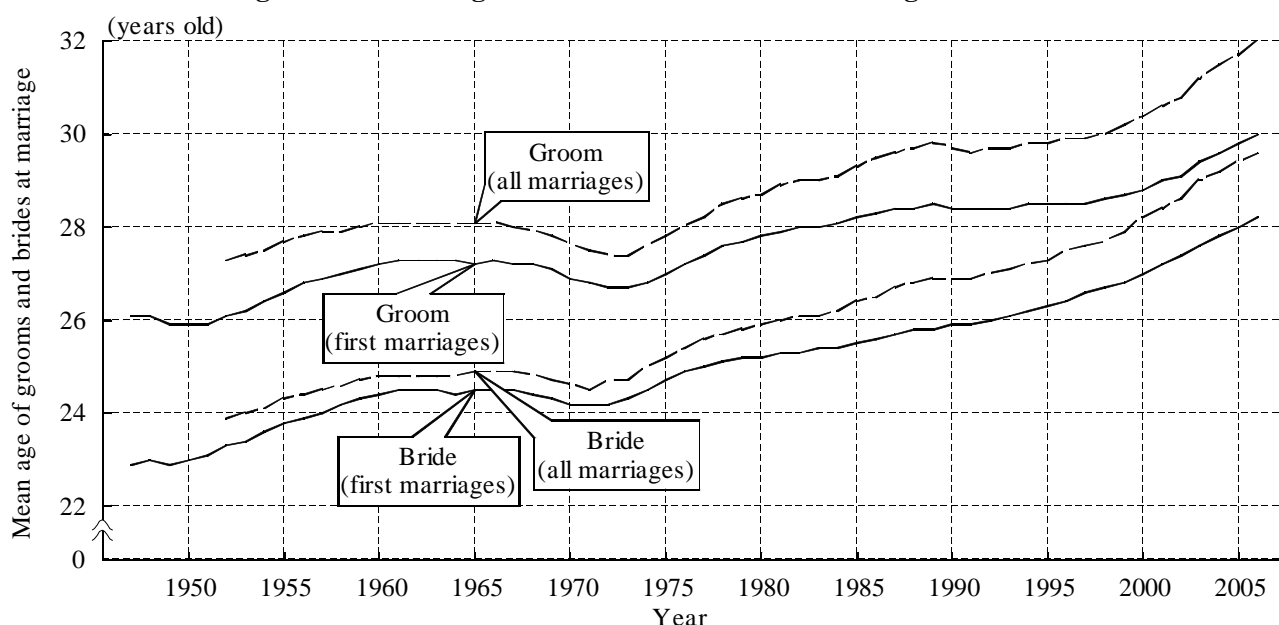
**Table 6.12 Mean Age of Bride and Groom at Marriage: 1899–2006**

(years old)

Year	All marriages			First marriages			Year	All marriages			First marriages		
	Groom	Bride	Difference	Groom	Bride	Difference		Groom	Bride	Difference	Groom	Bride	Difference
1899	27.6	23.0	4.6	...	...	...	1977	28.2	25.6	2.6	27.4	25.0	2.4
1900	27.7	23.1	4.6	...	...	...	1978	28.5	25.7	2.8	27.6	25.1	2.5
1905	28.6	24.0	4.6	...	...	...	1979	28.6	25.8	2.8	27.7	25.2	2.5
1910	28.7	24.0	4.7	27.0	23.0	4.0	1980	28.7	25.9	2.8	27.8	25.2	2.6
1915	29.1	24.3	4.8	27.4	23.2	4.2	1981	28.9	26.0	2.8	27.9	25.3	2.6
1920	29.2	24.2	5.0	27.4	23.2	4.2	1982	29.0	26.1	2.9	28.0	25.3	2.7
1925	28.8	24.0	4.8	27.1	23.1	4.0	1983	29.0	26.1	2.9	28.0	25.4	2.7
1930	28.9	24.1	4.8	27.3	23.2	4.1	1984	29.1	26.2	2.9	28.1	25.4	2.7
1935	29.0	24.6	4.4	27.8	23.8	4.0	1985	29.3	26.4	2.9	28.2	25.5	2.7
1940	30.0	24.9	5.1	29.0	24.6	4.4	1986	29.5	26.5	2.9	28.3	25.6	2.7
1947	...	...	...	26.1	22.9	3.2	1987	29.6	26.7	2.9	28.4	25.7	2.7
1950	...	...	...	25.9	23.0	2.9	1988	29.7	26.8	2.9	28.4	25.8	2.6
1955	27.7	24.3	3.4	26.6	23.8	2.8	1989	29.8	26.9	2.9	28.5	25.8	2.6
1960	28.1	24.8	3.3	27.2	24.4	2.8	1990	29.7	26.9	2.8	28.4	25.9	2.5
1961	28.1	24.8	3.3	27.3	24.5	2.8	1991	29.6	26.9	2.8	28.4	25.9	2.5
1962	28.1	24.8	3.3	27.3	24.5	2.8	1992	29.7	27.0	2.7	28.4	26.0	2.4
1963	28.1	24.8	3.3	27.3	24.5	2.8	1993	29.7	27.1	2.6	28.4	26.1	2.3
1964	28.1	24.8	3.3	27.3	24.4	2.9	1994	29.8	27.2	2.6	28.5	26.2	2.3
1965	28.1	24.9	3.2	27.2	24.5	2.7	1995	29.8	27.3	2.5	28.5	26.3	2.2
1966	28.1	24.9	3.2	27.3	24.5	2.8	1996	29.9	27.5	2.4	28.5	26.4	2.1
1967	28.0	24.9	3.1	27.2	24.5	2.7	1997	29.9	27.6	2.3	28.5	26.6	1.9
1968	27.9	24.8	3.1	27.2	24.4	2.8	1998	30.0	27.7	2.3	28.6	26.7	1.9
1969	27.8	24.7	3.1	27.1	24.3	2.8	1999	30.2	27.9	2.3	28.7	26.8	1.9
1970	27.6	24.6	3.0	26.9	24.2	2.7	2000	30.4	28.2	2.2	28.8	27.0	1.8
1971	27.5	24.5	3.0	26.8	24.2	2.6	2001	30.6	28.4	2.2	29.0	27.2	1.8
1972	27.4	24.7	2.7	26.7	24.2	2.5	2002	30.8	28.6	2.2	29.1	27.4	1.8
1973	27.4	24.7	2.7	26.7	24.3	2.4	2003	31.2	29.0	2.2	29.4	27.6	1.8
1974	27.6	25.0	2.6	26.8	24.5	2.3	2004	31.5	29.2	2.3	29.6	27.8	1.8
1975	27.8	25.2	2.6	27.0	24.7	2.3	2005	31.7	29.4	2.3	29.8	28.0	1.8
1976	28.0	25.4	2.6	27.2	24.9	2.3	2006	32.0	29.6	2.4	30.0	28.2	1.8

Source: Statistics and Information Department, Ministry of Health, Labour and Welfare, *Vital Statistics of Japan*. The data for 1947–1972 do not include Okinawa Prefecture. Until 1940, the age is as of the time of registration. For 1947–1967, the age is at the time when couples held their wedding ceremony. From 1968 onwards, the age is the age at which couples held their wedding ceremony or started to live together, whichever was earlier. Only cases in which couples started to live together (wedding ceremony) and registered in the same year are tabulated.

**Figure 6.4 Mean Age of Bride and Groom at Marriage: 1947–2006**



See the notes for Table 6.12.

**Table 6.13 Divorces by Duration of Cohabitation: 1947–2006**

Duration (years)	1947	1950	1960	1970	1980	1990	1995	2000	2006
	<b>Number</b>								
Total	79,551	83,689	69,410	95,937	141,689	157,608	199,016	264,246	257,475
Under 1	11,184	14,255	11,345	14,523	12,990	13,065	14,893	17,522	17,348
1	11,645	15,272	9,327	11,149	11,427	14,387	18,081	21,748	19,535
2	8,639	11,661	6,844	9,193	10,211	12,326	16,591	21,093	18,918
3	9,649	7,956	5,359	7,772	9,204	10,452	14,576	18,956	17,425
4	7,388	4,870	4,558	6,852	8,765	9,446	12,569	16,893	16,429
0–4	48,505	54,014	37,433	49,489	52,597	59,676	76,710	96,212	89,655
5–9	18,525	14,871	15,313	23,299	39,034	33,168	41,185	58,204	58,002
10–14	6,766	7,285	9,740	11,898	24,425	21,988	25,308	33,023	34,740
15–19	3,036	3,655	3,836	5,858	14,088	19,924	19,153	24,325	23,675
20 and over	2,479	2,925	3,037	5,072	10,883	21,718	31,877	41,824	37,782
Not stated	240	939	51	321	662	1,134	4,783	10,658	13,621
	<b>Proportion (%)</b>								
Total	100.0	100.0	100.0	100.0	100.0	100.0	100.0	100.0	100.0
Under 1	14.1	17.0	16.3	15.1	9.2	8.3	7.5	6.6	6.7
1	14.6	18.2	13.4	11.6	8.1	9.1	9.1	8.2	7.6
2	10.9	13.9	9.9	9.6	7.2	7.8	8.3	8.0	7.3
3	12.1	9.5	7.7	8.1	6.5	6.6	7.3	7.2	6.8
4	9.3	5.8	6.6	7.1	6.2	6.0	6.3	6.4	6.4
0–4	61.0	64.5	53.9	51.6	37.1	37.9	38.5	36.4	34.8
5–9	23.3	17.8	22.1	24.3	27.5	21.0	20.7	22.0	22.5
10–14	8.5	8.7	14.0	12.4	17.2	14.0	12.7	12.5	13.5
15–19	3.8	4.4	5.5	6.1	9.9	12.6	9.6	9.2	9.2
20 and over	3.1	3.5	4.4	5.3	7.7	13.8	16.0	15.8	14.7
Not stated	0.3	1.1	0.1	0.3	0.5	0.7	2.4	4.0	5.3

Source: Statistics and Information Department, Ministry of Health, Labour and Welfare, *Vital Statistics of Japan*.

**Table 6.14 Divorces with a Child or Children Involved: 1950–2006**

Year	Total	No children	Children involved in divorce			
			Total	Husband has the custody of all children	Wife has the custody of all children	Others
	<b>Number</b>					
1950	83,689	35,705	47,984	23,376	19,315	5,293
1955	75,267	29,557	45,710	21,130	18,573	6,007
1960	69,410	28,958	40,452	18,945	16,859	4,648
1965	77,195	32,232	44,963	20,328	20,205	4,430
1970	95,937	39,254	56,683	22,805	28,902	4,976
1975	119,135	44,467	74,668	25,162	43,259	6,247
1980	141,689	45,934	95,755	24,616	64,375	6,764
1985	166,640	52,959	113,681	25,094	81,395	7,192
1990	157,608	58,790	98,818	22,389	70,554	5,875
1995	199,016	76,949	122,067	22,817	93,326	5,924
2000	264,246	106,947	157,299	24,445	126,334	6,520
2001	285,911	114,109	171,802	27,450	137,347	7,005
2002	289,836	115,794	174,042	28,070	138,930	7,042
2003	283,854	113,523	170,331	26,040	137,634	6,657
2004	270,804	109,506	161,298	24,318	130,909	6,071
2005	261,917	107,813	154,104	23,154	125,174	5,776
2006	257,475	107,425	150,050	22,319	122,281	5,450
	<b>Proportion (%)</b>					
1950	100.0	42.7	100.0	48.7	40.3	11.0
1955	100.0	39.3	100.0	46.2	41.7	13.1
1960	100.0	41.7	100.0	46.8	41.7	11.5
1965	100.0	41.8	100.0	45.2	44.9	9.9
1970	100.0	40.9	100.0	40.2	51.0	8.8
1975	100.0	37.3	100.0	33.7	57.9	8.4
1980	100.0	32.4	100.0	25.7	67.2	7.1
1985	100.0	31.8	100.0	22.1	71.6	6.3
1990	100.0	37.3	100.0	22.7	71.4	5.9
1995	100.0	38.7	100.0	18.7	76.5	4.9
2000	100.0	40.5	100.0	15.5	80.3	4.1
2001	100.0	39.9	100.0	16.0	79.9	4.1
2002	100.0	40.0	100.0	16.1	79.8	4.0
2003	100.0	40.0	100.0	15.3	80.8	3.9
2004	100.0	40.4	100.0	15.1	81.2	3.8
2005	100.0	41.2	100.0	15.0	81.2	3.7
2006	100.0	41.7	100.0	14.9	81.5	3.6

Source: Statistics and Information Department, Ministry of Health, Labour and Welfare, *Vital Statistics of Japan*. Others are the cases in which a wife and a husband divide parental authority and respectively exercise it.

**Table 6.15 Divorces by Number of Children: 1950–2006**

Year	Total number of children involved in Divorce	Divorces by number of children							Number of children per one divorce
		Total number of divorces	0	1	2	3	4	5 and more	
1950	80,481	83,689	35,705	29,579	10,367	4,380	2,095	1,563	0.96
1960	71,339	69,410	28,958	20,993	11,502	5,391	1,860	706	1.03
1970	89,687	95,937	39,254	31,374	19,317	4,776	921	295	0.93
1980	166,096	141,689	45,934	41,829	40,756	10,755	1,841	574	1.17
1990	169,624	157,608	58,790	44,509	40,655	11,473	1,724	457	1.08
2000	268,929	264,246	106,947	73,405	60,984	19,097	3,103	710	1.02
2001	295,168	285,911	114,109	78,849	67,758	21,111	3,254	830	1.03
2002	299,522	289,836	115,794	79,534	68,854	21,495	3,326	833	1.03
2003	292,688	283,854	113,523	77,973	67,461	20,894	3,196	807	1.03
2004	275,815	270,804	109,506	74,662	63,537	19,297	3,097	705	1.02
2005	262,345	261,917	107,813	71,921	60,504	18,194	2,826	659	1.00
2006	254,982	257,475	107,425	70,323	58,811	17,511	2,744	661	0.99

Source: Statistics and Information Department, Ministry of Health, Labour and Welfare, *Vital Statistics of Japan*. The data prior to 1970 do not include Okinawa Prefecture. The wife and husband exercised parental authority over the child/children who was/were under 20 at the time of the divorce.

**Table 6.16 Marriages by Nationality of Bride and Groom: 1965–2006**

Year	Number					Proportion (%)				
	Total	Japanese husband and Japanese wife	Japanese husband and foreign wife	Foreign husband and Japanese wife	Foreign husband and foreign wife	Japanese husband and Japanese wife	Japanese husband and foreign wife	Foreign husband and Japanese wife	Foreign husband and foreign wife	
1965	958,902	950,696	1,067	3,089	4,050	99.14	0.11	0.32	0.42	
1970	1,033,952	1,023,859	2,108	3,438	4,547	99.02	0.20	0.33	0.44	
1975	945,976	935,583	3,222	2,823	4,348	98.90	0.34	0.30	0.46	
1980	778,624	767,441	4,386	2,875	3,922	98.56	0.56	0.37	0.50	
1985	739,002	723,669	7,738	4,443	3,152	97.93	1.05	0.60	0.43	
1990	725,727	696,512	20,026	5,600	3,589	95.97	2.76	0.77	0.49	
1995	795,323	764,161	20,787	6,940	3,435	96.08	2.61	0.87	0.43	
2000	801,466	761,875	28,326	7,937	3,328	95.06	3.53	0.99	0.42	
2005	718,102	672,784	33,116	8,365	3,837	93.69	4.61	1.16	0.53	
2006	735,132	686,270	35,993	8,708	4,161	93.35	4.90	1.18	0.57	

Source: Statistics and Information Department, Ministry of Health, Labour and Welfare, *Vital Statistics of Japan*. The data prior to 1970 do not include Okinawa Prefecture. Figures are the tabulation of Japanese and foreign nationals who married in Japan.

**Table 6.17 Non-Japanese married to Japanese by Nationality: 1965–2006**

Year	Foreign grooms					Foreign brides				
	Total	Korea	China	U. S. A.	Others	Total	Korea	China	U. S. A.	Others
Number										
1965	3,089	1,128	158	1,592	211	1,067	843	121	64	39
1970	3,438	1,386	195	1,571	286	2,108	1,536	280	75	217
1975	2,823	1,554	243	631	395	3,222	1,994	574	152	502
1980	3,438	1,386	195	1,571	286	2,108	1,536	280	75	217
1985	4,443	2,525	380	876	662	7,738	3,622	1,766	254	2,096
1990	5,600	2,721	708	1,091	1,080	20,026	8,940	3,614	260	7,212
1995	6,940	2,842	769	1,303	2,026	20,787	4,521	5,174	198	10,894
2000	7,937	2,509	878	1,483	3,067	28,326	6,214	9,884	202	12,026
2005	8,365	2,087	1,015	1,551	3,712	33,116	6,066	11,644	177	15,229
2006	8,708	2,335	1,084	1,474	3,815	35,993	6,041	12,131	215	17,606
Proportion (%)										
1965	100.0	36.5	5.1	51.5	6.8	100.0	79.0	11.3	6.0	3.7
1970	100.0	40.3	5.7	45.7	8.3	100.0	72.9	13.3	3.6	10.3
1975	100.0	55.0	8.6	22.4	14.0	100.0	61.9	17.8	4.7	15.6
1980	100.0	40.3	5.7	45.7	8.3	100.0	72.9	13.3	3.6	10.3
1985	100.0	56.8	8.6	19.7	14.9	100.0	46.8	22.8	3.3	27.1
1990	100.0	48.6	12.6	19.5	19.3	100.0	44.6	18.0	1.3	36.0
1995	100.0	41.0	11.1	18.8	29.2	100.0	21.7	24.9	1.0	52.4
2000	100.0	31.6	11.1	18.7	38.6	100.0	21.9	34.9	0.7	42.5
2005	100.0	24.9	12.1	18.5	44.4	100.0	18.3	35.2	0.5	46.0
2006	100.0	26.8	12.4	16.9	43.8	100.0	16.8	33.7	0.6	48.9

Source: Statistics and Information Department, Ministry of Health, Labour and Welfare, *Vital Statistics of Japan*. The data prior to 1970 do not include Okinawa Prefecture. Figures are the tabulation of foreign nationals who married Japanese in Japan only.

**Table 6.18 Divorces by Nationality of Couples: 1965–2006**

Year	Number				Proportion (%)			
	Total	Both of couple are Japanese	One of couple is Japanese	Foreign husband and foreign wife	Total	Both of couple is Japanese	One of couple is Japanese	Foreign husband and foreign wife
1965	77, 557	77, 195		362	100. 00	99. 53		0. 47
1970	96, 526	95, 937		589	100. 00	99. 39		0. 61
1975	120, 023	119, 135		888	100. 00	99. 26		0. 74
1980	142, 833	141, 689		1, 144	100. 00	99. 20		0. 80
1985	168, 212	166, 640		1, 572	100. 00	99. 07		0. 93
1990	159, 194	157, 608		1, 586	100. 00	99. 00		1. 00
1995	200, 168	191, 024	7, 992	1, 152	100. 00	95. 43	3. 99	0. 58
2000	265, 752	251, 879	12, 367	1, 506	100. 00	94. 78	4. 65	0. 57
2001	287, 483	272, 244	13, 667	1, 572	100. 00	94. 70	4. 75	0. 55
2002	291, 476	274, 584	15, 252	1, 640	100. 00	94. 20	5. 23	0. 56
2003	285, 529	268, 598	15, 256	1, 675	100. 00	94. 07	5. 34	0. 59
2004	272, 441	255, 505	15, 299	1, 637	100. 00	93. 78	5. 62	0. 60
2005	263, 163	246, 228	15, 689	1, 246	100. 00	93. 56	5. 96	0. 47
2006	258, 778	240, 373	17, 102	1, 303	100. 00	92. 89	6. 61	0. 50

Source: Statistics and Information Department, Ministry of Health, Labour and Welfare, *Vital Statistics of Japan*. The data prior to 1970 do not include Okinawa Prefecture. Figures are the tabulation of Japanese and foreign nationals who divorced in Japan.

**Table 6.19 Population by Marital Status and Sex: 1920–2005**

Year	Population aged 15 and over (thousands)					Proportion (%)			
	Total	Never married	Currently married	Widowed	Divorced	Never married	Currently married	Widowed	Divorced
<b>Male</b>									
1920	17,735	5,200	11,147	1,059	329	29.3	62.9	6.0	1.9
1925	18,950	5,677	11,860	1,078	334	30.0	62.6	5.7	1.8
1930	20,495	6,613	12,477	1,116	289	32.3	60.9	5.4	1.4
1935	21,840	7,242	13,134	1,169	295	33.2	60.1	5.4	1.4
1940 <sup>1)</sup>	22,697	7,946	13,321	1,431		35.0	58.7	6.3	
1950 <sup>2)</sup>	25,865	8,864	15,594	1,175	229	34.3	60.3	4.5	0.9
1955 <sup>2)</sup>	28,682	10,126	17,120	1,163	270	35.3	59.7	4.1	0.9
1960 <sup>2)</sup>	31,542	10,963	19,179	1,109	285	34.8	60.8	3.5	0.9
1965	35,693	12,320	22,016	1,063	274	34.5	61.7	3.0	0.8
1970	38,512	12,462	24,691	1,023	325	32.4	64.1	2.7	0.8
1975	41,112	11,946	27,711	1,053	388	29.1	67.4	2.6	0.9
1980	43,442	12,383	29,387	1,061	532	28.5	67.6	2.4	1.2
1985	46,131	13,652	30,525	1,124	749	29.6	66.2	2.4	1.6
1990	48,956	15,271	31,256	1,175	901	31.2	63.8	2.4	1.8
1995	51,239	16,434	32,051	1,286	1,128	32.1	62.6	2.5	2.2
2000	52,503	16,680	32,448	1,397	1,418	31.8	61.8	2.7	2.7
2005	53,086	16,686	32,260	1,515	1,744	32.0	61.8	2.9	3.3
<b>Female</b>									
1920	17,812	3,337	11,238	2,806	431	18.7	63.1	15.8	2.4
1925	18,862	3,597	11,879	2,951	436	19.1	63.0	15.6	2.3
1930	20,375	4,327	12,515	3,150	383	21.2	61.4	15.5	1.9
1935	21,869	4,944	13,173	3,358	394	22.6	60.2	15.4	1.8
1940 <sup>1)</sup>	23,217	5,770	13,504	3,943		24.9	58.2	17.0	
1950 <sup>2)</sup>	27,902	7,168	15,711	4,489	531	25.7	56.3	16.1	1.9
1955 <sup>2)</sup>	30,795	8,344	17,169	4,670	611	27.1	55.8	15.2	2.0
1960 <sup>2)</sup>	33,810	9,099	19,200	4,784	720	26.9	56.8	14.1	2.1
1965	37,987	10,291	21,976	4,981	716	27.1	57.9	13.1	1.9
1970	41,001	10,205	24,697	5,240	854	24.9	60.2	12.8	2.1
1975	43,561	9,376	27,751	5,518	905	21.5	63.7	12.7	2.1
1980	46,040	9,617	29,472	5,717	1,129	20.9	64.0	12.4	2.5
1985	48,843	10,586	30,547	6,182	1,466	21.7	62.5	12.7	3.0
1990	51,842	12,150	31,290	6,396	1,677	23.4	60.4	12.3	3.2
1995	54,186	13,028	32,039	6,901	1,987	24.0	59.1	12.7	3.7
2000	55,721	13,201	32,435	7,233	2,428	23.7	58.2	13.0	4.4
2005	56,679	13,147	32,323	7,660	2,957	23.4	57.6	13.7	5.3

Source: Statistics Bureau, Ministry of Public Management, Home Affairs, Posts and Telecommunications, *Population Census of Japan*. The population of individuals aged 15 and over as of October 1 of each year. The total includes individuals whose marital statuses were not reported.

1) Excluding foreigners and Japanese living outside Japan.

2) Not including Okinawa Prefecture.

**Table 6.20 Population by Marital Status, Age and Sex: 2005**

Age	Total	Never married	Currently married	Widowed	Divorced
Male					
15 and over	53,085,562	16,685,861	32,260,481	1,515,271	1,744,045
15-19	3,373,430	3,360,961	11,599	170	567
20-24	3,754,822	3,508,621	233,821	666	11,054
25-29	4,198,551	2,998,565	1,151,706	1,164	45,927
30-34	4,933,265	2,322,140	2,494,678	2,933	110,631
35-39	4,402,787	1,320,943	2,760,286	5,851	153,470
40-44	4,065,470	895,788	2,857,606	10,922	181,966
45-49	3,867,500	662,971	2,897,697	20,675	194,861
50-54	4,383,240	615,173	3,382,617	47,034	240,383
55-59	5,077,369	499,406	4,086,911	93,966	287,185
60-64	4,154,529	241,618	3,486,684	132,493	211,580
65-69	3,545,006	131,834	3,022,549	177,943	147,361
70-74	3,039,743	72,734	2,582,480	239,345	90,510
75-79	2,256,317	35,043	1,857,719	277,127	43,609
80-84	1,222,635	13,288	934,514	230,423	16,704
85-89	555,126	4,655	374,385	156,129	5,854
90-94	210,586	1,645	110,544	90,400	1,936
95-99	41,426	430	14,018	25,115	415
100 and over	3,760	46	667	2,915	32
Female					
15 and over	56,678,857	13,146,676	32,322,674	7,660,400	2,957,400
15-19	3,194,950	3,167,568	25,296	143	1,693
20-24	3,595,776	3,189,283	373,193	859	30,685
25-29	4,081,498	2,408,810	1,559,535	2,810	106,578
30-34	4,821,592	1,541,338	3,025,065	9,174	238,537
35-39	4,332,994	796,531	3,135,144	19,888	297,560
40-44	4,015,126	484,119	3,110,749	39,699	320,315
45-49	3,858,361	316,596	3,107,818	75,483	312,315
50-54	4,413,259	270,777	3,572,487	161,597	360,110
55-59	5,177,795	269,439	4,102,845	334,036	413,674
60-64	4,390,100	185,392	3,340,909	520,731	293,915
65-69	3,887,604	147,348	2,706,828	780,515	205,351
70-74	3,597,754	138,908	2,133,266	1,127,505	150,004
75-79	3,006,484	117,661	1,351,519	1,381,373	111,167
80-84	2,189,758	69,847	584,148	1,425,281	70,348
85-89	1,294,134	29,084	158,586	1,045,758	31,167
90-94	630,284	10,852	31,793	559,321	11,288
95-99	169,795	2,775	3,280	156,121	2,416
100 and over	21,593	348	213	20,106	277

Source: Statistics Bureau, Ministry of Public Management, Home Affairs, Posts and Telecommunications, *Population Census of Japan*. The total includes those individuals marital statuses were not reported.

**Table 6.21 Proportion Never Married and Singulate Mean Age at Marriage (SMAM): 1920-2005**

Year	Male		Female		Year	Male		Female	
	Proportion never married (%)	Mean age at first marriage (years old)	Proportion never married (%)	Mean age at first marriage (years old)		Proportion never married (%)	Mean age at first marriage (years old)	Proportion never married (%)	Mean age at first marriage (years old)
1920	2.17	25.02	1.80	21.16	1970	1.70	27.47	3.33	24.65
1925	1.72	25.09	1.61	21.18	1975	2.12	27.65	4.32	24.48
1930	1.68	25.77	1.48	21.83	1980	2.60	28.67	4.45	25.11
1935	1.65	26.38	1.44	22.51	1985	3.89	29.57	4.32	25.84
1940	1.75	27.19	1.47	23.33	1990	5.57	30.35	4.33	26.87
1950	1.46	26.21	1.35	23.60	1995	8.99	30.68	5.10	27.69
1955	1.18	27.04	1.46	24.68	2000	12.57	30.81	5.82	28.58
1960	1.26	27.44	1.87	24.96	2005	15.96	31.14	7.25	29.42
1965	1.50	27.42	2.52	24.82					

Computed based on *Population Census of Japan*. The Proportion Never Married was computed as the mean value of the proportion remaining single at ages 45-49 and the proportion remaining single at ages 50-54.

**Table 6.22 Proportion of Marital Status by Age and Sex: 1920–2005**

(1) Never Married

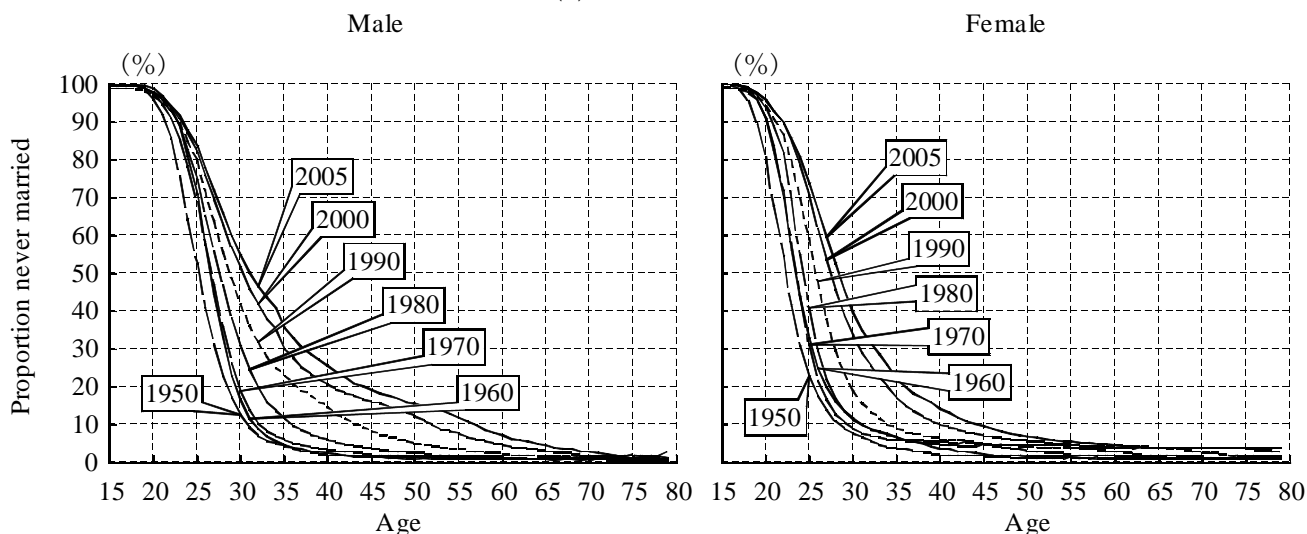
(%)

Age	1920	1930	1950	1960	1970	1980	1990	1995	2000	2005
<b>Male</b>										
15 and over	29.3	32.3	34.3	34.8	32.3	28.5	31.2	32.1	31.8	31.4
15–19	97.2	99.0	99.5	99.8	99.3	99.6	98.5	99.2	99.5	99.6
20–24	70.9	79.6	82.9	91.6	90.1	91.5	92.2	92.6	92.9	93.4
25–29	25.7	28.7	34.5	46.1	46.5	55.1	64.4	66.9	69.3	71.4
30–34	8.2	8.1	8.0	9.9	11.6	21.5	32.6	37.3	42.9	47.1
35–39	4.1	3.9	3.2	3.6	4.7	8.5	19.0	22.6	25.7	30.0
40–44	2.8	2.4	1.9	2.0	2.8	4.7	11.7	16.4	18.4	22.0
45–49	2.3	1.8	1.5	1.4	1.9	3.1	6.7	11.2	14.6	17.1
50–54	2.0	1.5	1.4	1.1	1.5	2.1	4.3	6.7	10.1	14.0
55–59	1.8	1.4	1.2	1.0	1.2	1.5	2.9	4.3	6.0	9.8
60–64	1.7	1.2	1.2	0.9	1.0	1.2	2.0	2.9	3.8	5.8
65–69	1.5	1.0	1.3	0.9	0.9	0.9	1.4	1.9	2.5	3.7
70–74	1.5	0.9	1.4	0.9	0.9	0.8	1.0	1.4	1.7	2.4
75–79	1.4	0.9	2.0	1.0	0.9	0.7	0.8	1.0	1.2	1.6
80–84	1.2	} 0.7	} 2.0	1.0	1.1	0.7	0.7	0.8	0.9	1.1
85 and over	1.5			1.1	1.2	0.7	0.7	0.8	0.8	0.8
<b>Female</b>										
15 and over	18.7	21.2	25.7	26.9	24.9	20.9	23.4	24.0	23.7	23.2
15–19	82.3	89.3	96.6	98.6	97.9	99.0	98.2	98.9	99.1	99.1
20–24	31.4	37.7	55.3	68.3	71.7	77.7	85.0	86.4	87.9	88.7
25–29	9.2	8.5	15.2	21.6	18.1	24.0	40.2	48.0	54.0	59.0
30–34	4.1	3.7	5.7	9.4	7.2	9.1	13.9	19.7	26.6	32.0
35–39	2.7	2.4	3.0	5.5	5.8	5.5	7.5	10.0	13.8	18.4
40–44	2.1	1.8	2.0	3.2	5.3	4.4	5.8	6.7	8.6	12.1
45–49	1.9	1.6	1.5	2.1	4.0	4.4	4.6	5.6	6.3	8.2
50–54	1.7	1.4	1.2	1.7	2.7	4.4	4.1	4.5	5.3	6.1
55–59	1.5	1.3	1.2	1.3	2.0	3.5	4.2	4.1	4.3	5.2
60–64	1.4	1.1	1.2	1.1	1.6	2.4	4.2	4.1	3.8	4.2
65–69	1.4	1.0	1.3	1.0	1.3	1.7	3.4	4.2	3.9	3.8
70–74	1.4	0.9	1.3	1.0	1.1	1.3	2.3	3.4	4.0	3.9
75–79	1.4	0.8	1.5	1.1	1.1	1.0	1.7	2.3	3.2	3.9
80–84	1.3	} 0.7	} 1.2	1.0	1.0	0.8	1.3	1.7	2.2	3.2
85 and over	1.4			0.9	1.0	0.7	1.0	1.4	1.6	2.0

Source: Statistics Bureau, Ministry of Public Management, Home Affairs, Posts and Telecommunications, *Population Census of Japan*. The population by sex that is used as denominator includes individuals whose marital statuses were not reported. The total includes individuals whose marital status was not reported.

**Figure 6.5 Proportion of Marital Status: 1950–2005**

(1) Never Married



See the notes for Table 6.22 (1).

**Table 6.22 Proportion of Marital Status by Age and Sex: 1920–2005 (continued)**

(2) Currently Married

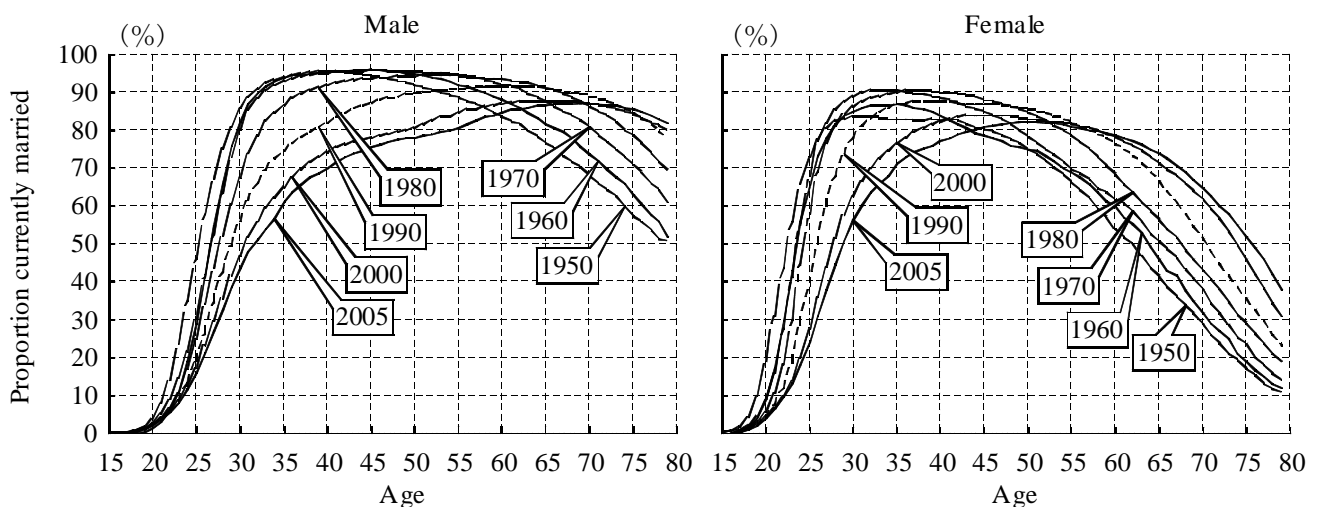
(%)

Age	1920	1930	1950	1960	1970	1980	1990	1995	2000	2005
<b>Male</b>										
15 and over	62.9	60.9	60.3	60.8	64.1	67.6	63.8	62.6	61.8	60.8
15–19	2.6	1.0	0.4	0.2	0.6	0.3	0.3	0.3	0.4	0.3
20–24	27.4	19.6	16.6	8.2	9.8	8.1	6.2	6.5	6.8	6.2
25–29	70.6	68.7	64.0	53.2	52.9	44.1	33.9	31.6	29.6	27.4
30–34	87.6	88.5	90.1	88.7	87.3	77.0	65.2	60.4	54.9	50.6
35–39	90.9	92.0	94.7	94.5	93.9	89.4	78.1	74.3	69.2	62.7
40–44	91.0	92.1	95.0	95.7	95.3	92.7	84.3	79.4	76.1	70.3
45–49	89.5	90.3	93.4	95.4	95.6	93.8	88.5	83.4	78.8	74.9
50–54	87.1	87.6	90.5	93.8	95.2	94.3	90.4	87.0	82.2	77.2
55–59	83.5	84.1	86.7	90.5	93.7	93.8	91.3	88.8	85.6	80.5
60–64	77.6	78.9	81.2	85.7	90.5	92.5	91.4	89.5	87.2	83.9
65–69	70.5	72.3	73.5	79.3	85.0	89.5	90.2	89.1	87.4	85.3
70–74	61.1	62.6	64.5	70.1	77.3	83.7	87.4	87.3	86.1	85.0
75–79	50.4	51.5	54.3	58.2	66.9	74.4	81.4	83.2	82.4	82.3
80–84	39.4	} 36.5	} 39.7	45.3	53.5	62.0	71.2	74.8	76.3	76.4
85 and over	30.7			32.8	37.6	44.2	52.3	56.4	59.5	61.6
<b>Female</b>										
15 and over	63.1	61.4	56.3	56.8	60.3	64.0	60.4	59.1	58.2	57.0
15–19	16.6	10.3	3.3	1.3	1.8	0.9	0.7	0.6	0.9	0.8
20–24	64.9	60.1	42.7	31.2	27.7	21.9	13.5	12.6	11.3	10.4
25–29	85.7	87.6	79.1	76.3	80.4	74.5	57.5	49.6	43.5	38.2
30–34	89.4	90.7	83.3	86.0	90.0	88.0	82.7	76.4	68.9	62.7
35–39	88.1	89.2	82.6	85.9	89.6	90.2	87.3	84.7	79.2	72.4
40–44	84.5	85.4	82.1	81.5	86.9	89.5	87.1	86.1	83.3	77.5
45–49	79.1	79.3	78.5	76.9	82.7	86.8	86.4	85.0	83.7	80.5
50–54	70.4	71.1	71.9	73.1	75.1	82.3	84.2	83.8	82.4	80.9
55–59	61.1	60.5	61.9	65.6	66.8	74.9	79.9	80.6	80.3	79.2
60–64	48.6	47.1	49.4	54.8	58.2	63.5	73.0	74.7	75.7	76.1
65–69	35.9	35.0	36.3	41.2	46.0	51.3	61.0	65.6	67.8	69.6
70–74	23.3	22.5	24.0	27.1	32.1	38.1	45.1	50.7	56.1	59.3
75–79	12.9	13.0	14.1	15.5	18.7	24.0	29.8	33.0	38.7	45.0
80–84	6.2	} 5.4	} 5.6	7.9	9.3	12.7	16.4	18.3	21.5	26.7
85 and over	4.6			3.8	4.3	4.9	6.1	6.5	7.7	9.2

See the notes for Table 6.22 (1).

**Figure 6.5 Proportion of Marital Status: 1950–2005 (continued)**

(2) Currently Married



See the notes for Table 6.22 (1).



**Table 6.22 Proportion of Marital Status by Age and Sex: 1920–2005 (continued)**

(3) Widowed

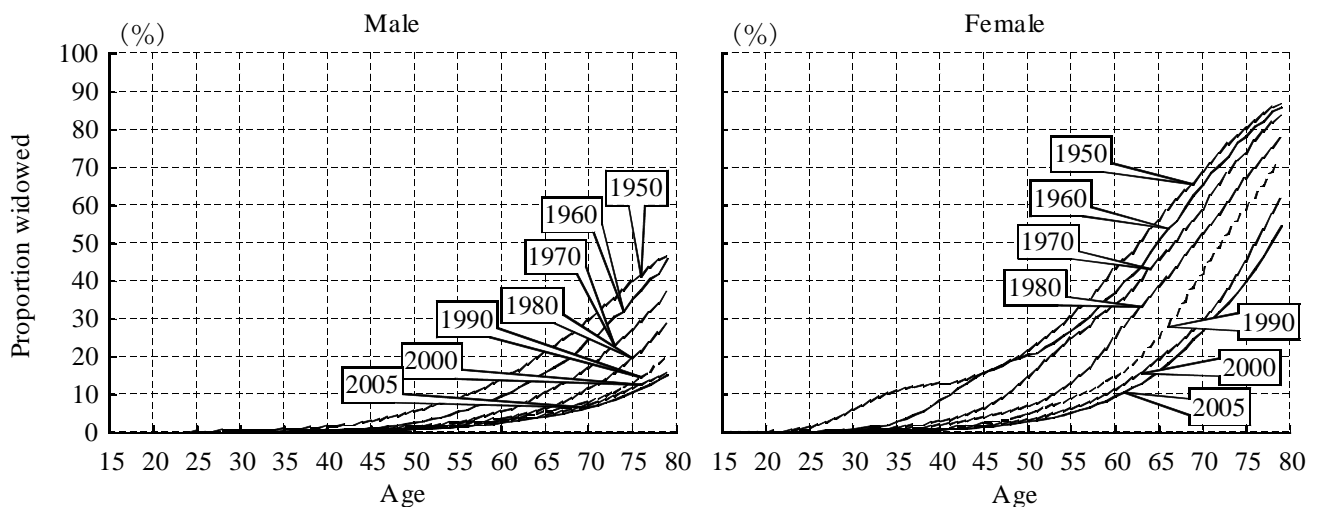
(%)

Age	1920	1930	1950	1960	1970	1980	1990	1995	2000	2005
<b>Male</b>										
15 and over	6.0	5.4	4.5	3.5	2.7	2.4	2.4	2.5	2.7	2.9
15–19	0.0	0.0	0.0	0.0	0.0	0.0	0.0	0.0	0.0	0.0
20–24	0.3	0.1	0.1	0.0	0.0	0.0	0.0	0.0	0.0	0.0
25–29	1.1	0.7	0.3	0.1	0.1	0.0	0.0	0.0	0.0	0.0
30–34	1.9	1.4	0.6	0.3	0.1	0.1	0.1	0.1	0.1	0.1
35–39	2.7	2.2	1.0	0.5	0.3	0.3	0.2	0.2	0.2	0.1
40–44	4.0	3.6	1.9	0.8	0.5	0.5	0.4	0.4	0.3	0.3
45–49	5.9	6.0	3.9	1.7	1.0	0.9	0.8	0.7	0.7	0.5
50–54	8.6	8.9	6.8	3.5	1.9	1.6	1.5	1.4	1.2	1.1
55–59	12.3	12.6	10.7	7.0	3.7	2.8	2.4	2.3	2.2	1.9
60–64	18.3	18.0	16.4	11.9	7.1	4.6	4.0	3.8	3.5	3.2
65–69	25.8	24.9	24.1	18.5	12.8	8.0	6.3	6.0	5.6	5.0
70–74	35.6	34.9	33.1	27.7	20.6	14.0	9.8	9.4	8.7	7.9
75–79	46.8	46.3	42.7	39.6	31.1	23.4	16.0	14.2	13.3	12.3
80–84	58.3	} 61.8	} 57.6	52.6	44.4	35.8	26.3	23.0	19.8	18.8
85 and over	66.8			64.9	60.3	53.4	45.1	41.4	36.3	33.9
<b>Female</b>										
15 and over	15.8	15.5	16.1	14.2	12.8	12.4	12.3	12.7	13.0	13.5
15–19	0.1	0.0	0.0	0.0	0.3	0.0	0.0	0.0	0.0	0.0
20–24	0.8	0.5	0.4	0.1	0.3	0.0	0.0	0.0	0.0	0.0
25–29	2.1	1.6	2.7	0.4	0.3	0.2	0.1	0.1	0.1	0.1
30–34	3.7	3.2	8.1	1.5	0.8	0.5	0.3	0.3	0.2	0.2
35–39	6.4	6.0	11.8	4.6	1.9	1.2	0.7	0.6	0.5	0.5
40–44	10.4	10.5	13.5	11.5	4.0	2.6	1.6	1.3	1.2	1.0
45–49	16.1	16.7	17.8	17.6	9.1	5.0	3.4	2.6	2.3	2.0
50–54	25.1	25.0	24.8	22.3	18.5	9.0	6.5	5.3	4.2	3.7
55–59	34.9	35.8	35.1	30.5	28.1	17.1	11.1	9.8	8.1	6.5
60–64	47.8	49.8	47.7	41.9	37.6	30.2	18.1	16.4	14.3	11.9
65–69	60.9	62.4	60.9	55.9	50.6	43.6	31.0	25.7	23.0	20.1
70–74	73.9	75.4	73.3	70.1	65.0	57.5	48.6	41.8	34.9	31.3
75–79	84.6	85.3	83.2	81.8	78.7	72.1	64.9	61.3	53.0	45.9
80–84	91.6	} 93.3	} 92.3	89.6	88.3	83.6	78.8	77.1	71.5	65.1
85 and over	93.3			94.0	93.5	91.5	89.4	89.6	86.0	84.2

See the notes for Table 6.22 (1).

**Figure 6.5 Proportion of Marital Status: 1950–2005 (continued)**

(3) Widowed



See the notes for Table 6.22 (1).

**Table 6.22 Proportion of Marital Status by Age and Sex: 1920–2005 (continued)**

(4) Divorced

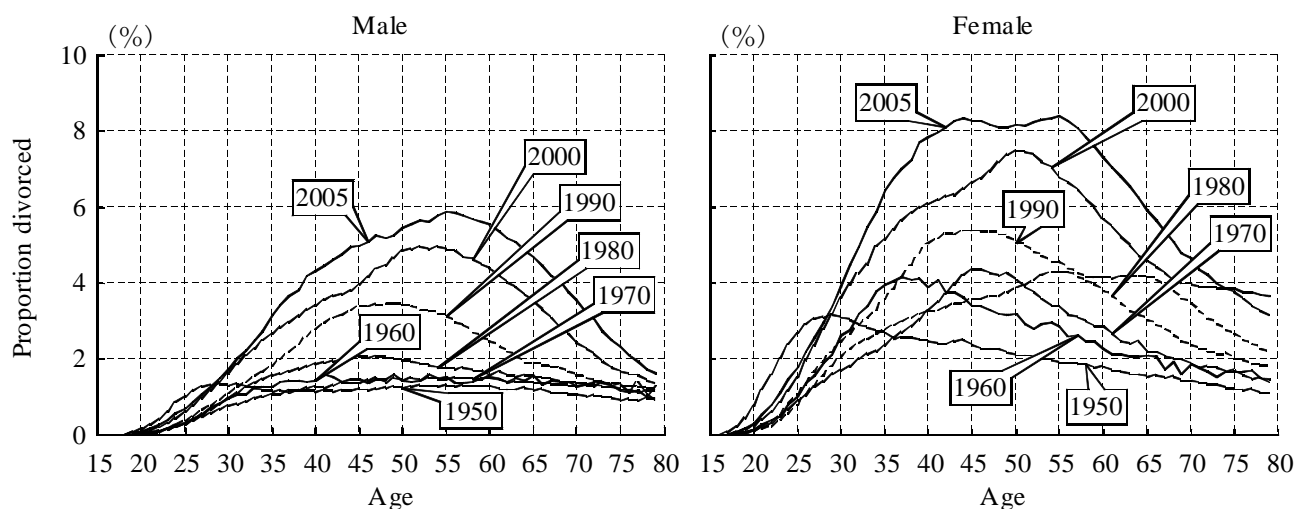
(%)

Age	1920	1930	1950	1960	1970	1980	1990	1995	2000	2005
<b>Male</b>										
15 and over	1.9	1.4	0.9	0.9	0.8	1.2	1.8	2.2	2.7	3.3
15–19	0.2	0.0	0.0	0.0	0.0	0.0	0.0	0.0	0.0	0.0
20–24	1.4	0.7	0.5	0.1	0.1	0.1	0.1	0.2	0.2	0.3
25–29	2.6	1.8	1.2	0.6	0.5	0.5	0.6	0.8	1.0	1.1
30–34	2.3	2.0	1.3	1.1	0.9	1.2	1.4	1.6	2.0	2.2
35–39	2.2	1.9	1.1	1.4	1.1	1.7	2.2	2.4	3.0	3.5
40–44	2.2	1.8	1.1	1.4	1.3	1.9	3.0	3.2	3.6	4.5
45–49	2.3	1.9	1.2	1.5	1.4	2.0	3.4	4.0	4.3	5.0
50–54	2.3	2.0	1.3	1.5	1.5	1.9	3.3	4.2	4.9	5.5
55–59	2.4	2.0	1.3	1.5	1.5	1.7	2.8	3.7	4.7	5.7
60–64	2.4	1.9	1.2	1.5	1.4	1.6	2.2	3.0	4.0	5.1
65–69	2.2	1.7	1.1	1.4	1.3	1.4	1.8	2.2	3.1	4.2
70–74	1.9	1.5	1.0	1.3	1.3	1.3	1.4	1.7	2.1	3.0
75–79	1.5	1.3	0.9	1.2	1.1	1.2	1.3	1.3	1.5	1.9
80–84	1.1	} 0.9	} 0.7	1.1	1.0	1.1	1.1	1.1	1.2	1.4
85 and over	1.0			1.1	0.9	1.0	1.0	0.9	1.0	1.0
<b>Female</b>										
15 and over	2.4	1.9	1.9	2.1	2.1	2.5	3.2	3.7	4.4	5.2
15–19	1.0	0.4	0.1	0.0	0.0	0.0	0.0	0.0	0.0	0.1
20–24	2.9	1.8	1.6	0.4	0.3	0.3	0.4	0.5	0.7	0.9
25–29	3.0	2.4	3.0	1.6	1.2	1.3	1.6	1.8	2.4	2.6
30–34	2.7	2.3	2.9	3.1	2.0	2.4	2.9	3.4	4.2	4.9
35–39	2.8	2.3	2.6	4.1	2.7	3.0	4.2	4.4	5.6	6.9
40–44	2.9	2.3	2.4	3.8	3.7	3.4	5.2	5.6	6.3	8.0
45–49	2.9	2.5	2.3	3.4	4.3	3.6	5.3	6.4	7.0	8.1
50–54	2.8	2.5	2.0	2.9	3.7	4.1	4.8	6.0	7.3	8.2
55–59	2.5	2.4	1.9	2.5	3.1	4.2	4.3	5.1	6.4	8.0
60–64	2.2	2.0	1.7	2.2	2.6	3.5	4.2	4.3	5.2	6.7
65–69	1.8	1.6	1.5	1.9	2.1	2.8	3.9	4.0	4.3	5.3
70–74	1.4	1.3	1.3	1.7	1.8	2.2	3.1	3.7	3.9	4.2
75–79	1.1	1.0	1.1	1.6	1.5	1.9	2.4	2.8	3.4	3.7
80–84	0.8	} 0.7	} 0.9	1.4	1.4	1.7	2.0	2.1	2.6	3.2
85 and over	0.7			1.3	1.3	1.6	1.7	1.6	1.9	2.1

See the notes for Table 6.22 (1).

**Figure 6.5 Proportion of Marital Status: 1950–2005 (continued)**

(4) Divorced



See the notes for Table 6.22 (1).

**Table 6.23 Proportion of Marital Status by Sex and Occupation: 2005**

(%)

Occupation	15 and over	15-19	20-24	25-29	30-34	35-39	40-44	45-49	50 and over
<b>Never married</b>									
<b>Male</b>									
Total <sup>1)</sup>	27.1	98.2	90.2	67.1	41.6	27.5	19.3	14.2	6.1
Agriculture, forestry and fisheries	11.7	97.5	87.2	64.8	45.6	35.3	27.4	22.0	3.6
Production, transport, etc.	29.8	97.5	86.3	62.8	42.5	30.9	23.7	18.9	8.6
Sales and service	29.6	99.0	93.0	67.7	38.5	23.3	15.8	11.5	5.4
Clerical work, technical work, managers, etc.	22.8	99.0	94.8	72.7	41.7	25.0	15.8	10.0	3.8
<b>Female</b>									
Total <sup>1)</sup>	28.2	98.5	92.8	70.3	42.2	24.4	13.7	8.4	4.9
Agriculture, forestry and fisheries	2.9	95.7	81.6	44.8	19.3	9.2	4.6	2.5	0.8
Production, transport, etc.	16.9	97.2	87.2	60.0	33.0	16.9	8.7	5.1	3.4
Sales and service	29.1	98.9	92.8	69.2	39.5	20.8	11.2	7.0	4.8
Clerical work, technical work, managers, etc.	34.8	98.8	94.4	72.9	45.6	28.5	16.8	10.8	7.5
<b>Currently married</b>									
<b>Male</b>									
Total <sup>1)</sup>	68.0	1.7	9.4	31.7	56.0	68.5	75.8	80.2	86.5
Agriculture, forestry and fisheries	81.5	2.4	12.3	33.6	51.1	59.7	66.9	71.7	88.9
Production, transport, etc.	64.3	2.4	13.1	35.6	54.6	63.9	69.8	73.7	82.5
Sales and service	65.9	0.9	6.8	31.2	59.3	72.8	79.5	83.0	87.2
Clerical work, technical work, managers, etc.	74.0	0.9	5.1	26.7	56.9	72.5	81.0	86.5	91.4
<b>Female</b>									
Total <sup>1)</sup>	59.3	1.3	6.2	26.6	50.6	65.1	75.0	79.7	74.1
Agriculture, forestry and fisheries	83.2	4.0	17.3	52.0	76.4	86.6	91.7	93.4	83.3
Production, transport, etc.	67.3	2.6	11.2	34.7	57.0	71.0	79.4	82.8	74.2
Sales and service	55.1	1.0	6.0	26.3	50.4	65.5	74.2	77.8	69.3
Clerical work, technical work, managers, etc..	56.4	1.1	5.1	25.1	49.1	62.9	73.4	78.9	76.0
<b>Widowed / Divorced</b>									
<b>Male</b>									
Total <sup>1)</sup>	4.6	0.1	0.4	1.2	2.3	3.6	4.6	5.2	7.0
Agriculture, forestry and fisheries	6.7	0.1	0.5	1.6	3.2	4.7	5.5	6.0	7.4
Production, transport, etc.	5.6	0.1	0.6	1.6	2.9	4.5	6.0	6.9	8.4
Sales and service	4.3	0.1	0.3	1.0	2.2	3.5	4.4	5.2	7.2
Clerical work, technical work, managers, etc..	3.1	0.1	0.1	0.5	1.4	2.3	2.9	3.3	4.7
<b>Female</b>									
Total <sup>1)</sup>	12.3	0.2	0.9	3.1	7.1	10.1	11.1	11.7	20.6
Agriculture, forestry and fisheries	13.8	0.3	1.0	3.2	4.2	4.1	3.7	4.0	15.8
Production, transport, etc.	15.5	0.3	1.6	5.3	9.8	11.7	11.6	11.9	21.9
Sales and service	15.5	0.2	1.2	4.5	10.1	13.3	14.3	14.9	25.3
Clerical work, technical work, managers, etc..	8.7	0.1	0.5	2.0	5.3	8.3	9.5	10.2	16.2

Source: Statistics Bureau, Ministry of Public Management, Home Affairs, Posts and Telecommunications, *Population Census of Japan*. The total includes those individuals marital statuses were not reported.

1) Including "not classifiable".