

(1)  
(2)

(1)  
(2)

(1)  
(2)  
(3)

(1)  
(2)

(1)  
(2)  
(3)

(1)  
(2)

(1)  
(2)

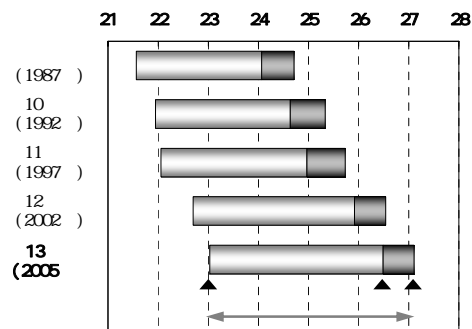
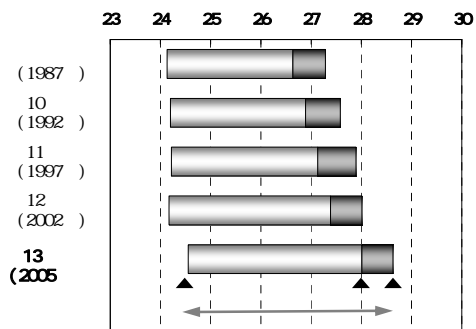
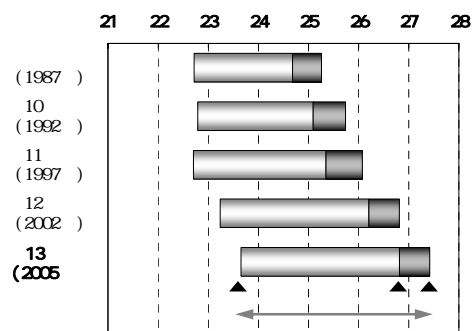
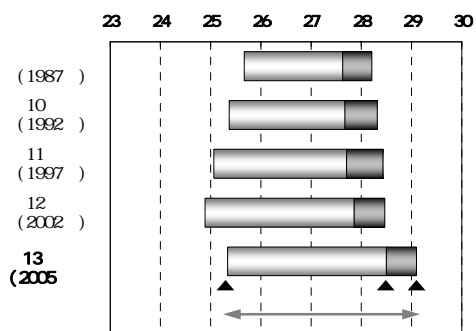




1 1-1)  
( ) 1.2 (48 )

	(1987 )	25.7	28.2	22.7	25.3	2.5	2.9
10	(1992 )	25.4	28.3	22.8	25.7	2.9	2.6
11	(1997 )	25.1	28.4	22.7	26.1	3.4	2.4
12	(2002 )	24.9	28.5	23.2	26.8	3.6	1.7
<b>13</b>	<b>(2005 )</b>	<b>25.3</b>	<b>29.1</b>	<b>23.7</b>	<b>27.4</b>	<b>3.8</b>	<b>1.7</b>
	(1987 )	24.1	27.3	21.6	24.7	3.1	2.6
10	(1992 )	24.2	27.6	21.9	25.3	3.4	2.3
11	(1997 )	24.2	27.9	22.1	25.7	3.7	2.2
12	(2002 )	24.2	28.0	22.7	26.5	3.8	1.5
<b>13</b>	<b>(2005 )</b>	<b>24.6</b>	<b>28.6</b>	<b>23.0</b>	<b>27.1</b>	<b>4.1</b>	<b>1.5</b>

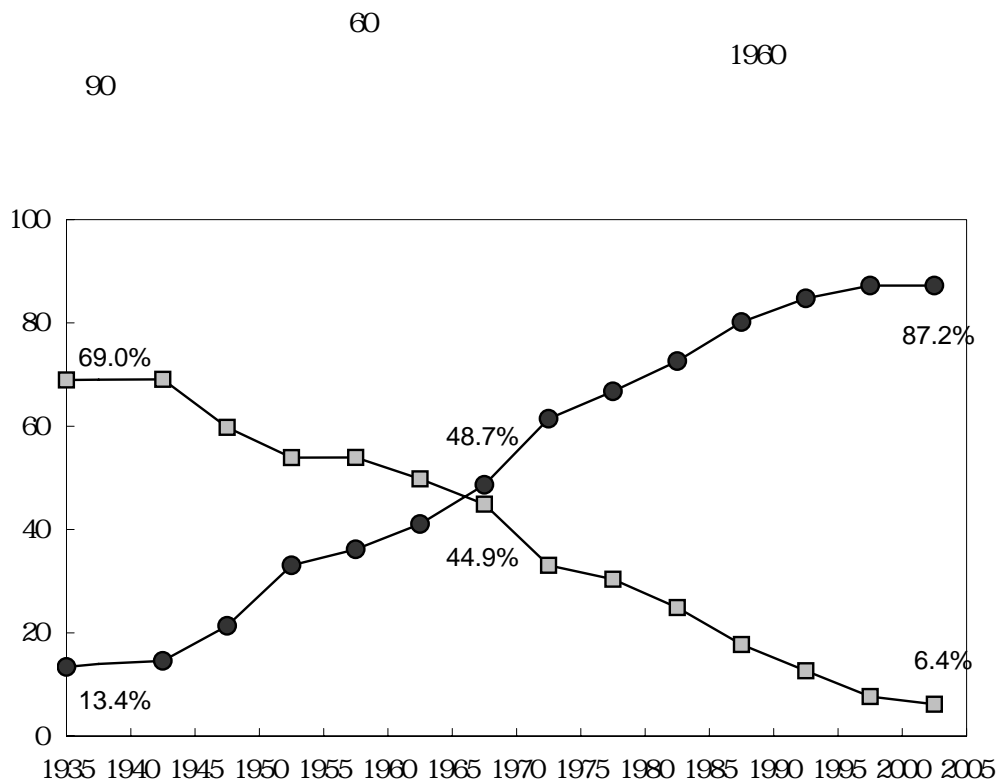
( )  
1-2 ( ) (1,289 974) 10 (1,342 1,102)  
11 (1,145 997) 12 (1,221 1,090) 13 (885 774)



1-1

( )										
(1982 )	100.0 %	25.3 %	20.5	6.1	8.2	5.8	-	2.2	29.4 %	2.5 %
(1987 )	100.0	31.5	22.4	7.0	6.3	5.3	-	1.5	23.3	2.7
10 (1992 )	100.0	35.0	22.3	7.7	6.2	5.5	4.2	1.8	15.2	2.0
11 (1997 )	100.0	33.5	27.0	10.4	5.2	4.8	4.7	1.5	9.7	3.1
12 (2002 )	100.0	32.9	29.2	9.3	5.4	5.1	4.8	1.1	6.9	5.2
<b>13</b> <b>(2005 )</b>	100.0	<b>29.9</b>	<b>30.9</b>	<b>11.1</b>	<b>4.5</b>	<b>5.2</b>	<b>4.3</b>	<b>1.0</b>	<b>6.4</b>	<b>6.8</b>

(1,421) 10 (1,525) 11 (1,304) 12 (1,488) 13 (1,076) (1,298)



( )

<b>2 09</b>	
15 19	( )
2 20	(1972 )
	30
2 09	
1980	
(1977 )	

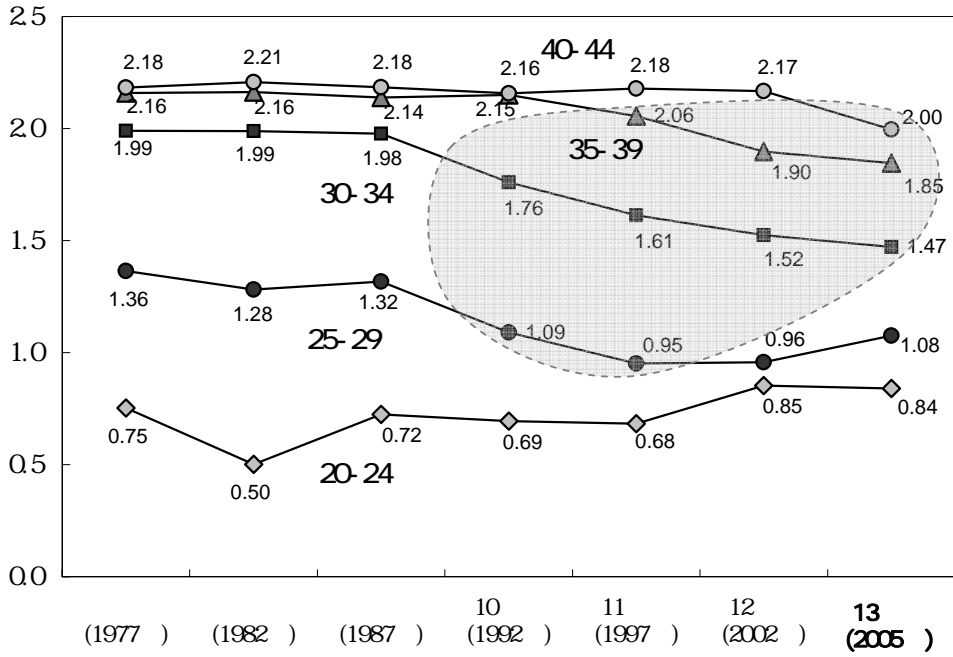
<b>15 19</b>	
( )	
(1940 )	4 27
(1952 )	3 50
(1957 )	3 60
(1962 )	2 83
(1967 )	2 65
(1972 )	2 20
(1977 )	2 19
(1982 )	2 23
(1987 )	2 19
10 (1992 )	2 21
11 (1997 )	2 21
12 (2002 )	2 23
<b>13 (2005 )</b>	<b>2 09</b>
15 19	
( )	

<b>15 19</b>						
						(± ) ( )
(1977 )	3 0 %	11.0	57.0	23.8	5.1	2 19 (± 0.023) (1, 427)
(1982 )	3 1	9.1	55.4	27.4	5.0	2 23 (± 0.022) (1, 429)
(1987 )	2 7	9.6	57.8	25.9	3.9	2 19 (± 0.019) (1, 755)
10 (1992 )	3 1	9.3	56.4	26.5	4.8	2 21 (± 0.019) (1, 849)
11 (1997 )	3 7	9.8	53.6	27.9	5.0	2 21 (± 0.023) (1, 334)
12 (2002 )	3 4	8.9	53.2	30.2	4.2	2 23 (± 0.023) (1, 257)
<b>13 (2005 )</b>	<b>5 6</b>	<b>11.7</b>	<b>56.0</b>	<b>22.4</b>	<b>4.3</b>	<b>2 09 (± 0.027) (1, 078)</b>
2-1						15
	2( )					

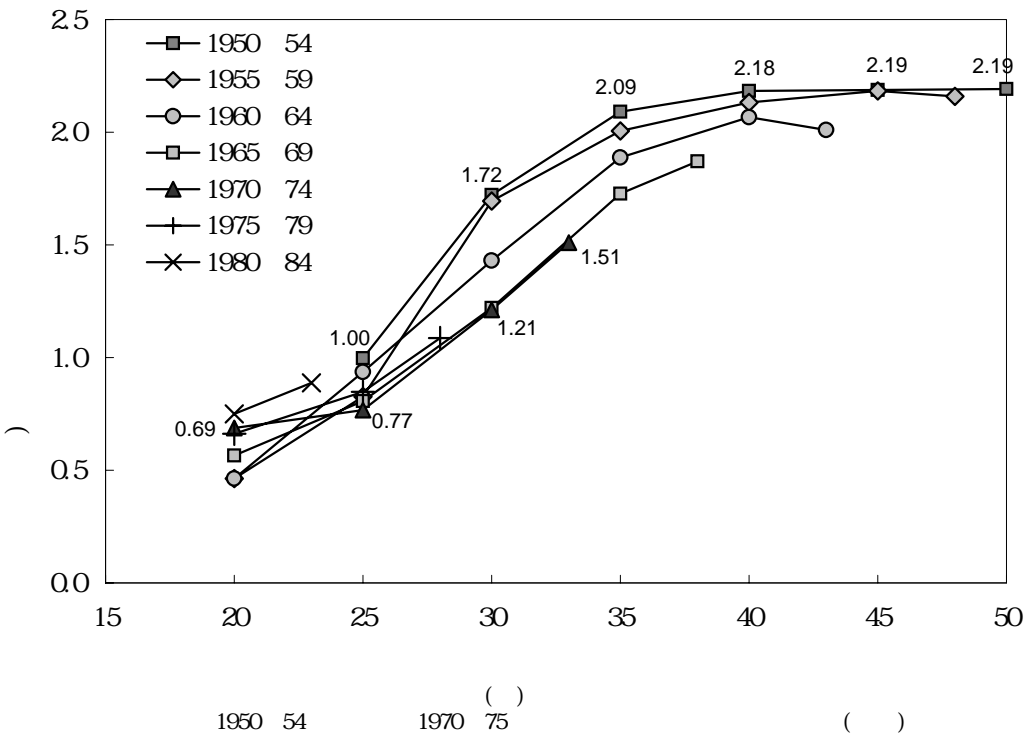
	(1977 )	(1982 )	(1987 )	10 (1992 )	11 (1997 )	12 (2002 )	<b>13 (2005 )</b>
	0.93	0.80	0.93	0.80	0.71	0.75	<b>0.80</b>
	1.93	1.95	1.97	1.84	1.75	1.71	<b>1.63</b>
10 14	2 17	2 16	2 16	2 19	2 10	2 04	<b>1.98</b>
15 19	2 19	2 23	2 19	2 21	2 21	2 23	<b>2 09</b>
20	2 30	2 24	2 30	2 21	2 24	2 32	<b>2 30</b>
	( )						

1960

2-1) ) 25 34 1990 ( 10 ( )  
 ( 2-2 ) 70 1960 20



( )

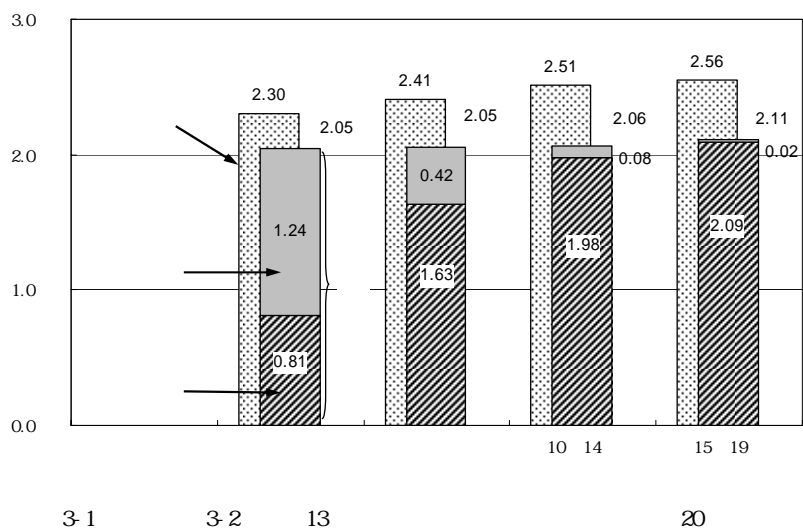


( )  
2.5 (1987 )  
10

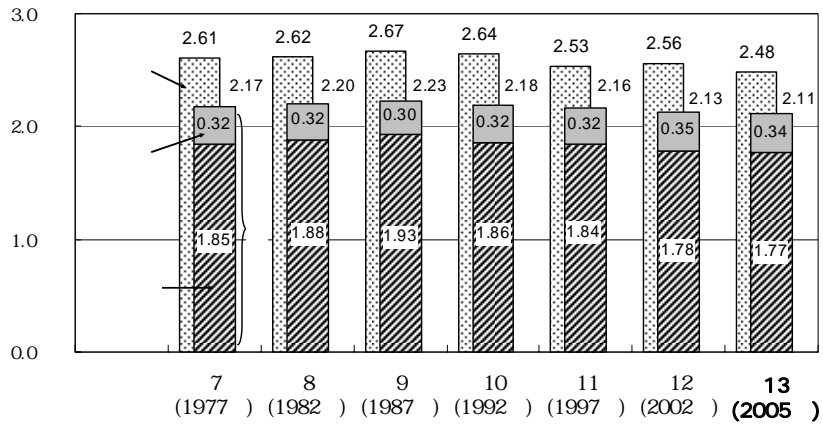
( )  
2.11  
10 19

	(1977 )	(1982 )	(1987 )	10 (1992 )	11 (1997 )	12 (2002 )	13 (2005 )
	2.42	2.49	2.51	2.40	2.33	2.31	<b>2.30</b>
	2.56	2.63	2.65	2.61	2.47	2.48	<b>2.41</b>
10 14	2.68	2.67	2.73	2.76	2.58	2.60	<b>2.51</b>
15 19	2.67	2.66	2.70	2.71	2.60	2.69	<b>2.56</b>
20	2.79	2.63	2.73	2.69	2.65	2.76	<b>2.62</b>
( )	2.61	2.62	2.67	2.64	2.53	2.56	<b>2.48</b>
	(8,314)	(7,803)	(8,348)	(8,627)	(7,069)	(6,634)	<b>(5,634)</b>

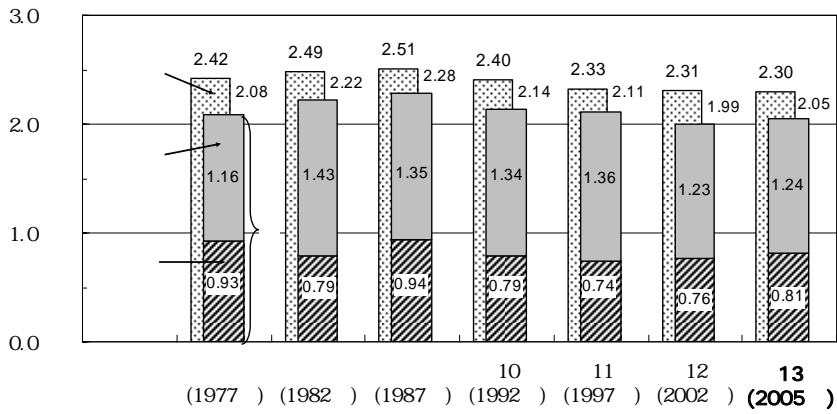
	(1977 )	(1982 )	(1987 )	10 (1992 )	11 (1997 )	12 (2002 )	13 (2005 )
	2.08	2.22	2.28	2.14	2.11	1.99	<b>2.05</b>
	2.17	2.21	2.25	2.18	2.10	2.07	<b>2.05</b>
10 14	2.18	2.18	2.20	2.25	2.17	2.10	<b>2.06</b>
15 19	2.13	2.21	2.19	2.18	2.22	2.22	<b>2.11</b>
20	2.30	2.21	2.24	2.18	2.19	2.28	<b>2.30</b>
( )	2.17	2.20	2.23	2.18	2.16	2.13	<b>2.11</b>
	(8,129)	(7,784)	(8,024)	(8,351)	(6,472)	(6,564)	<b>(5,603)</b>



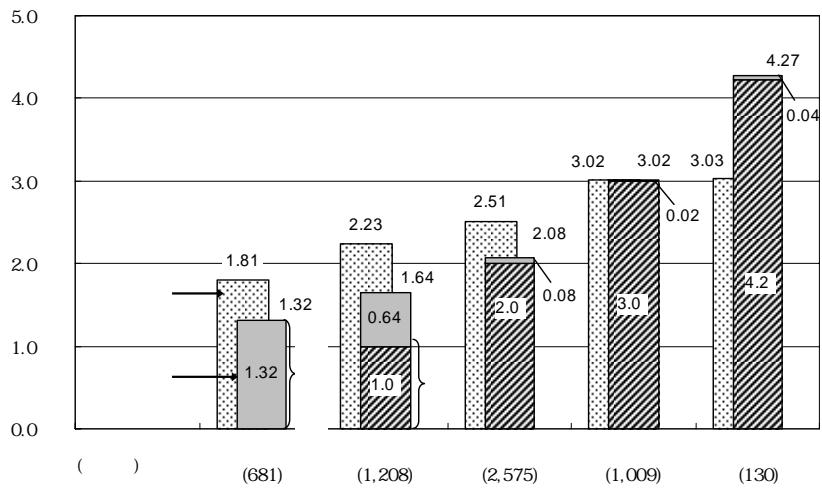




0 4



2



25 39  
25 34

30

( )

25 29	(115)	83.5	6.1	20.0	27.8	4.3	7.8	20.0	20.0	16.5	5.2	13.0	13.0
30 34	(329)	78.7	18.2	24.6	21.9	12.5	10.6	19.8	19.1	18.2	7.0	12.5	11.9
35 39	(464)	75.0	40.1	26.5	17.9	16.4	16.8	17.9	17.0	16.2	8.0	9.7	8.6
40 49	(897)	54.0	49.2	18.2	14.3	20.8	19.5	11.1	9.1	10.5	9.9	5.5	5.7
	(1,825)	65.9	38.0	21.6	17.5	16.9	16.3	15.0	13.8	13.6	8.5	8.3	8.1
12	(2,134)	62.9	33.2	21.8	17.1	19.7	15.7	14.6	12.1	20.4	9.6	7.2	11.5

35.3 25 (20 )

4( )

(55.3 )

(74.7

20.4  
(26.9

(54.8

	4.1%	(74)		21.6%	37.8	4.1	6.8	16.2	<b>58.1</b>	1.4	4.1	10.8	
	<b>20.4</b>	(372)		54.8	36.3	18.8	17.7	19.1	<b>26.9</b>	9.9	14.8	15.9	
	6.5	(119)		33.6	44.5	20.2	13.4	26.1	<b>41.2</b>	9.2	10.9	10.1	
	<b>55.3</b>	(1,010)		<b>74.7</b>	36.8	23.4	18.8	15.4	9.0	<b>16.0</b>	13.8	13.5	
	5.8	(105)		<b>80.0</b>	40.0	22.9	21.0	21.9	7.6	<b>27.6</b>	21.0	22.9	
	7.9	(145)		<b>72.4</b>	44.1	25.5	13.8	11.0	4.1	<b>23.4</b>	13.8	6.9	
	100.0	(1,825)		65.9	38.0	21.6	17.5	16.9	16.3	15.0	13.8	13.6	

53.9

5.9

5

18.6

45.5

11.0

(36.8)

10.14

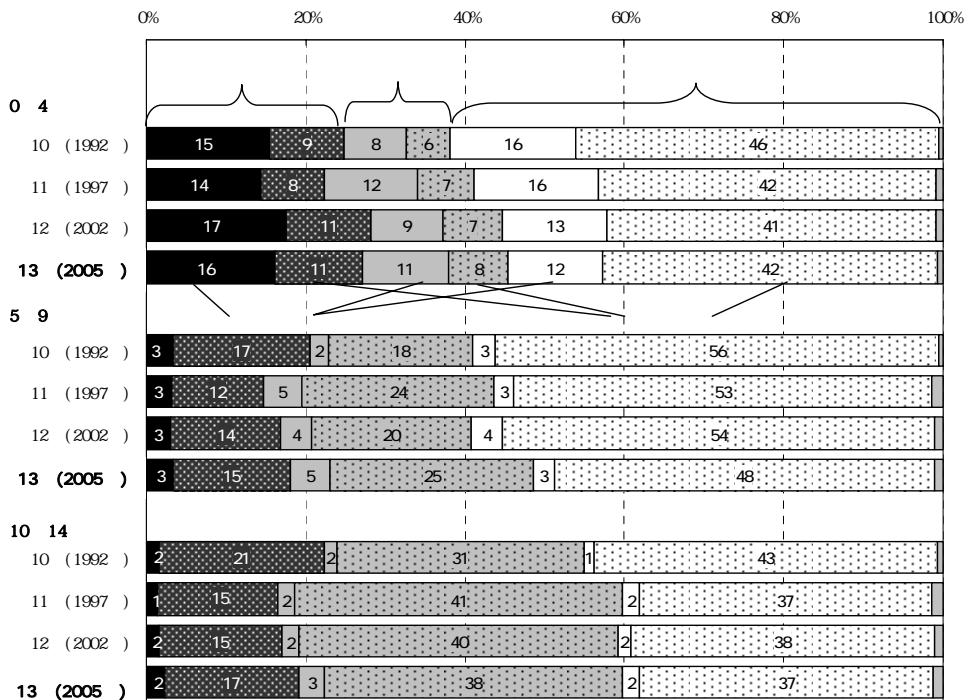
(54.4)

		(	( )						
0.4	10 (1992)	100.0 % (1,462)	23.3 %	14.8	15.5 %	9.3	15.7	45.6	
	11 (1997)	100.0 (1,215)	26.0	15.1	14.3	8.1	15.7	42.3	
	12 (2002)	100.0 (1,281)	26.6	18.1	17.5	10.7	13.0	41.3	
	<b>13 (2005)</b>	<b>100.0 ( 935)</b>	<b>26.8</b>	<b>18.6</b>	<b>16.1</b>	<b>11.0</b>	<b>11.8</b>	<b>42.1</b>	
5.9	10 (1992)	100.0 (1,473)	5.6	35.3	3.4	17.2	2.8	55.7	
	11 (1997)	100.0 (1,219)	8.0	35.6	3.2	11.6	2.5	52.5	
	12 (2002)	100.0 (1,160)	6.8	34.1	2.9	13.9	3.8	54.3	
	<b>13 (2005)</b>	<b>100.0 (1,107)</b>	<b>8.3</b>	<b>40.2</b>	<b>3.4</b>	<b>14.7</b>	<b>2.8</b>	<b>47.7</b>	
10.14	10 (1992)	100.0 (1,512)	3.2	51.7	1.7	20.6	1.3	43.1	
	11 (1997)	100.0 (1,223)	3.4	56.3	1.4	15.1	2.0	36.7	
	12 (2002)	100.0 (1,124)	3.6	55.5	1.5	15.5	1.6	38.2	
	<b>13 (2005)</b>	<b>100.0 (1,132)</b>	<b>5.4</b>	<b>54.4</b>	<b>2.3</b>	<b>16.9</b>	<b>2.0</b>	<b>36.8</b>	

( )

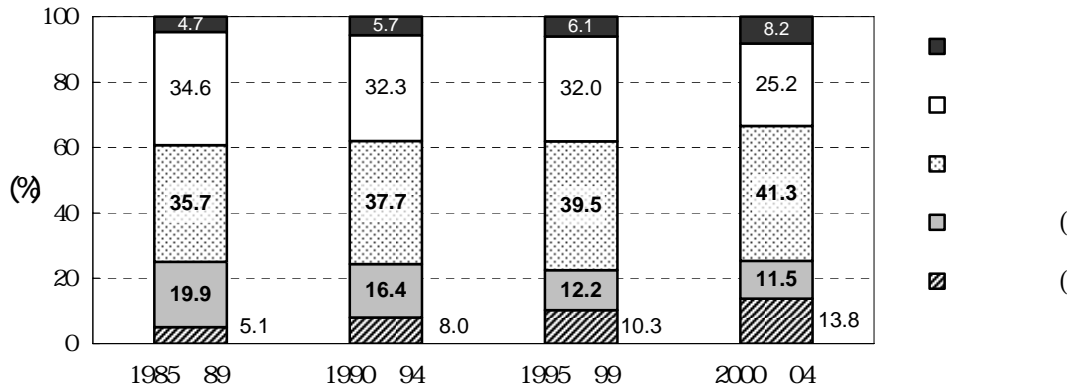
11 93.5% 12 84.8% 13 86.0

10 91.6%



1980

25%



1

12 13

( )  
( )

5

5 9

10 14

15 19

0 4	10 (1992 )	1.39	1.35	1.35	1.60	1.35	678
	11 (1997 )	1.31	1.29	1.31	1.46	1.30	477
	12 (2002 )	1.30	1.27	1.29	1.24	1.31	579
	<b>13 (2005 )</b>	<b>1.39</b>	<b>1.28</b>	<b>1.29</b>	<b>1.38</b>	<b>1.43</b>	<b>422</b>
5 9	10 (1992 )	2.04	2.04	2.04	2.01	2.03	1,314
	11 (1997 )	1.97	2.00	1.93	1.94	1.95	1,007
	12 (2002 )	1.93	1.94	1.89	1.85	1.93	998
	<b>13 (2005 )</b>	<b>1.85</b>	<b>1.76</b>	<b>1.68</b>	<b>1.85</b>	<b>1.94</b>	<b>936</b>
10 14	10 (1992 )	2.32	2.41	2.34	2.26	2.29	1,407
	11 (1997 )	2.25	2.20	2.07	2.22	2.29	967
	12 (2002 )	2.16	2.19	2.17	2.17	2.11	1,034
	<b>13 (2005 )</b>	<b>2.15</b>	<b>2.19</b>	<b>2.15</b>	<b>2.17</b>	<b>2.21</b>	<b>1,005</b>
15 19	10 (1992 )	2.29	2.35	2.29	2.27	2.20	1,561
	11 (1997 )	2.30	2.41	2.28	2.26	2.27	947
	12 (2002 )	2.32	2.33	2.19	2.34	2.28	991
	<b>13 (2005 )</b>	<b>2.22</b>	<b>2.26</b>	<b>2.24</b>	<b>2.27</b>	<b>2.17</b>	<b>844</b>

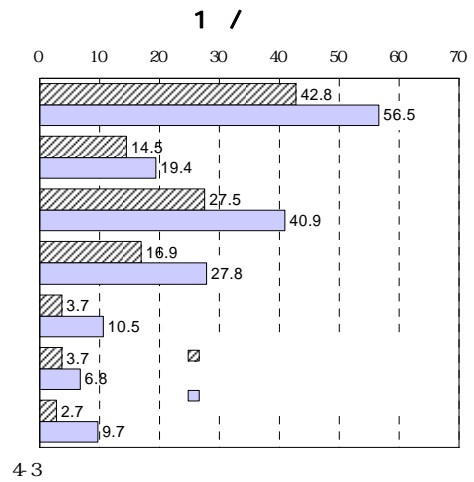
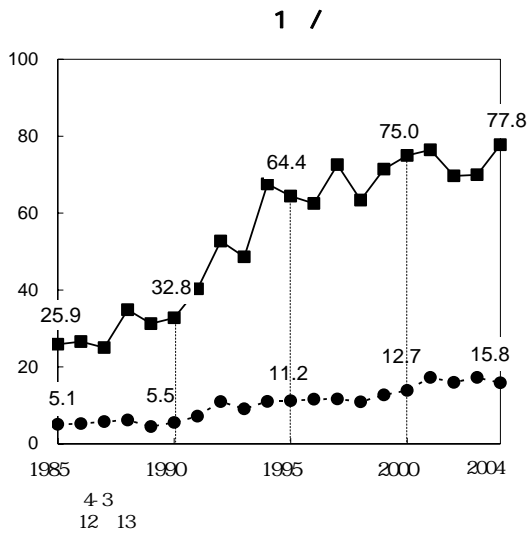
( )

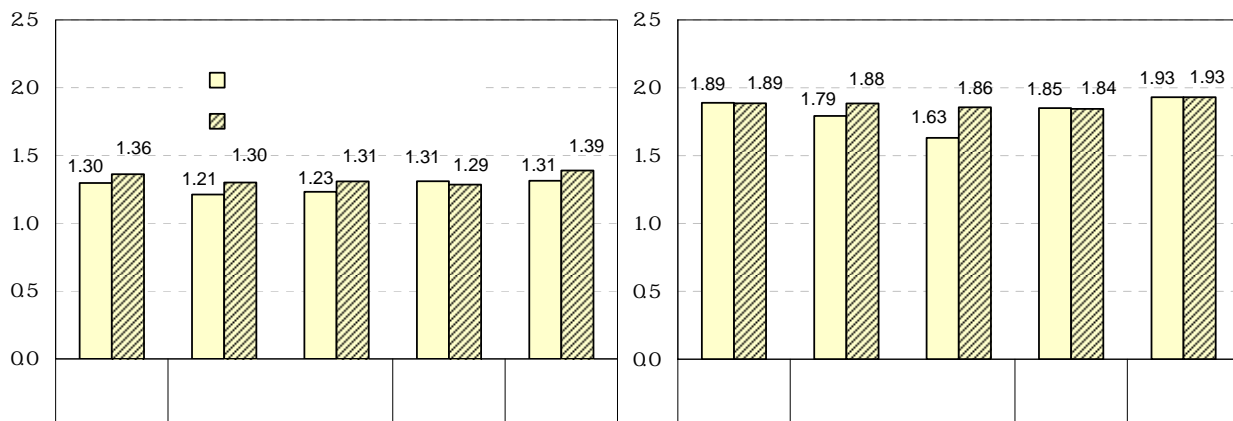
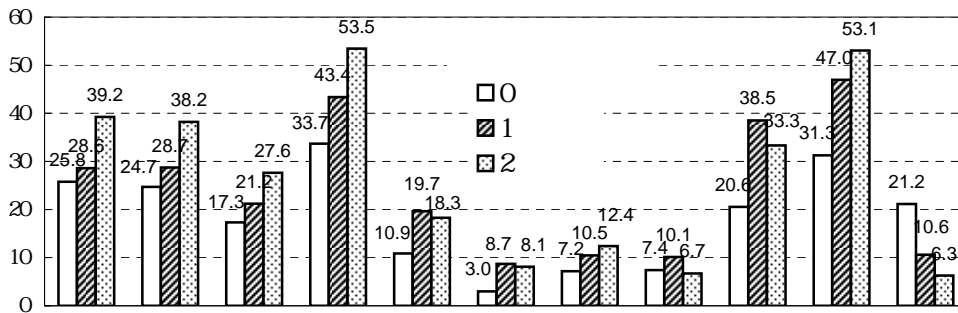
( )

( )

89.6 (47.1 ) 39.4 ( 4.3 ) (76.2 ) ( 4.3 ) ( 4.3 ) ( 4.4 )

	( 4.731)	16.7 %	8.9	2.9	11.2	6.6	3.0	1.1	1.6	6.3	8.5	56.0
	( 753)	76.2 %	47.1	16.1	31.7	20.3	5.8	4.6	4.9	2.5	7.8	9.2
1955 59	( 181)	72.4 %	30.9	12.7	25.4	16.6	4.4	1.7	6.1	-	9.9	14.4
1960 64	( 191)	75.9	37.2	14.7	30.4	25.1	5.8	5.2	3.7	2.1	5.8	7.9
1965 69	( 174)	75.9	52.9	17.2	33.9	18.4	5.7	7.5	6.3	1.1	5.2	8.0
1970 74	( 145)	80.7	66.2	20.7	35.9	20.7	7.6	4.8	4.8	6.9	11.7	4.8
1975	( 62)	79.0	64.5	16.1	38.7	21.0	6.5	3.2	1.6	4.8	6.5	11.3
1 29	( 154)	60.4 %	28.6	4.5	22.7	19.5	5.8	1.3	6.5	1.3	9.1	16.2
30 99	( 106)	66.0	36.8	7.5	25.5	19.8	2.8	5.7	1.9	1.9	8.5	17.0
100 299	( 119)	79.8	37.0	19.3	29.4	16.0	10.1	5.9	5.0	4.2	10.9	6.7
300 999	( 90)	85.6	55.6	17.8	31.1	22.2	2.2	8.9	2.2	2.2	5.6	5.6
1000	( 132)	80.3	55.3	20.5	40.2	18.9	5.3	5.3	4.5	3.8	6.8	6.8
	( 140)	90.0	70.0	27.1	41.4	27.1	7.1	3.6	7.9	2.1	5.7	2.9





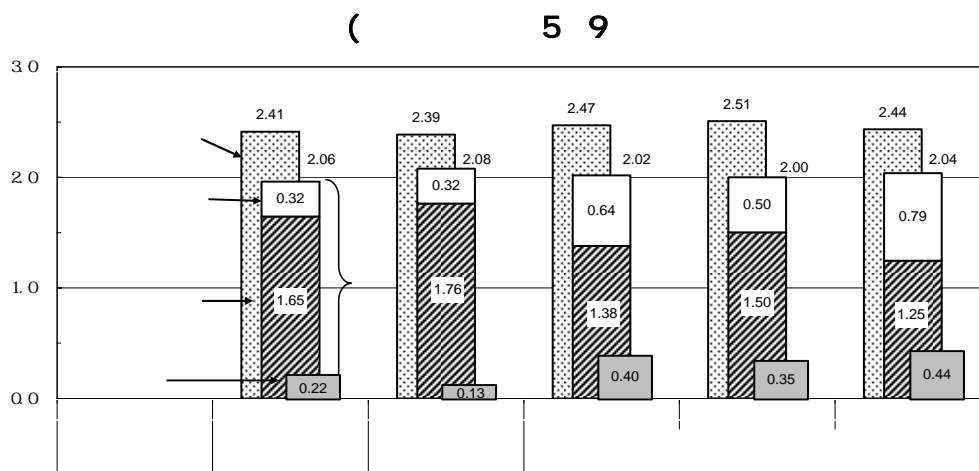
( ) 12 13

4 2

26.1 ) ( ) 44.7% ( 48.2 ) 25.8 ( )  
 24.3 ( ) 13.4

		( )	( )				( )		
		100.0% (5,932)	63.8%	25.8	12.1	13.4	1.3	0.4	10.4
20	29	100.0 (708)	66.7	24.0	13.4	10.0	2.4	0.6	9.3
30	39	100.0 (2,577)	61.9	29.8	15.3	14.1	1.9	0.4	8.3
40	49	100.0 (2,644)	64.8	22.4	8.7	13.5	0.3	0.2	12.8
		100.0 (745)	49.0	44.7	19.6	24.3	6.9	0.8	6.3
20	29	100.0 (215)	64.2	33.0	15.8	16.3	5.1	0.9	2.8
30	39	100.0 (345)	46.4	46.1	20.3	24.6	10.1	1.2	7.5
40	49	100.0 (184)	35.9	56.0	22.8	33.2	2.7	0.0	8.2
12		100.0% (6,949)	58.3%	26.1	13.0	12.7	1.2	0.4	15.6
		100.0 (881)	41.2	48.2	21.7	25.5	7.5	1.0	10.6

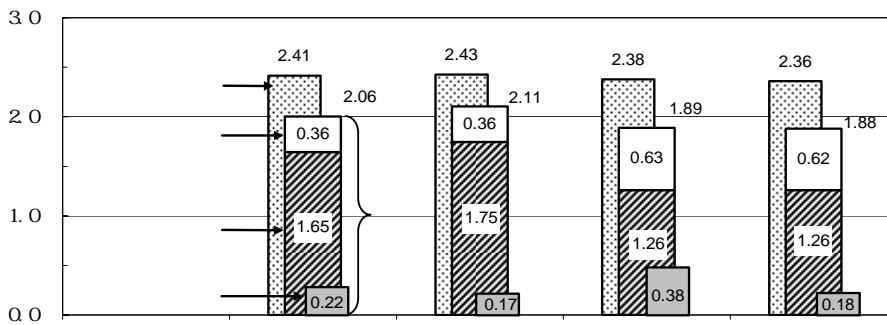
19



(24.3%)

	( )	( )	( )	( )	( )	( )	( )	( )	( )
	100.0% (5,932)	24.3%	8.5	8.7	5.1	3.7	2.1	59.0	16.7
20-24	100.0% (134)	17.9%	11.2	2.2	0.0	3.7	1.5	67.9	14.2
25-29	100.0 (574)	19.7	10.8	5.4	0.2	3.1	1.9	65.9	14.5
30-34	100.0 (1,205)	22.4	9.6	7.2	0.4	4.2	3.2	63.2	14.4
35-39	100.0 (1,372)	19.5	6.6	8.5	0.4	3.9	2.5	63.9	16.6
40-44	100.0 (1,350)	26.2	8.5	10.9	4.8	4.6	2.3	54.6	19.2
45-49	100.0 (1,294)	31.9	8.2	10.3	17.4	2.4	0.6	50.3	17.8
(30-39)									
0-20	100.0 (1,160)	20.2	7.6	7.7	0.3	3.4	3.3	66.0	13.9
20-30	100.0 (231)	19.9	7.4	6.5	1.3	3.9	0.9	60.6	19.5
30-40	100.0 (293)	20.8	9.6	7.9	0.3	4.8	2.7	64.9	14.3
40-50	100.0 (240)	21.7	8.3	6.7	0.4	5.4	2.9	65.4	12.9
50	100.0 (407)	22.6	8.1	10.1	0.5	4.2	3.2	63.9	13.5
50	100.0 (107)	26.2	8.4	10.3	0.0	6.5	1.9	56.1	17.8
15-19 3 (139)									

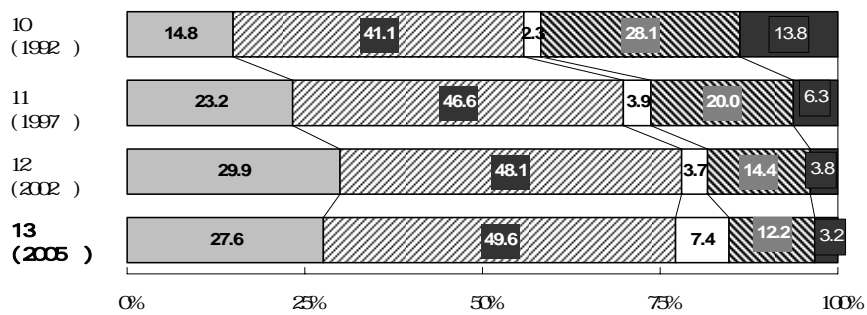
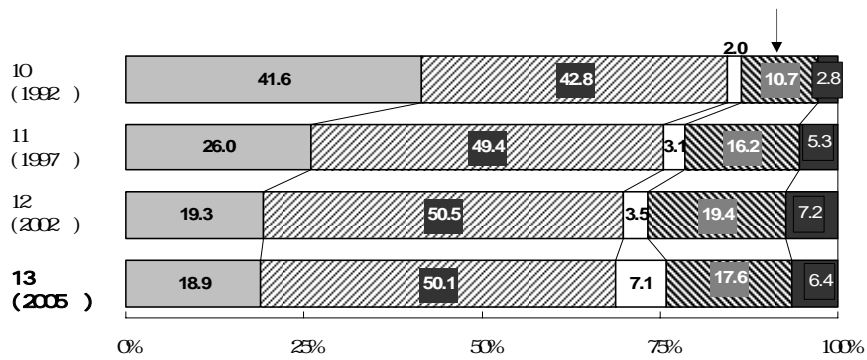
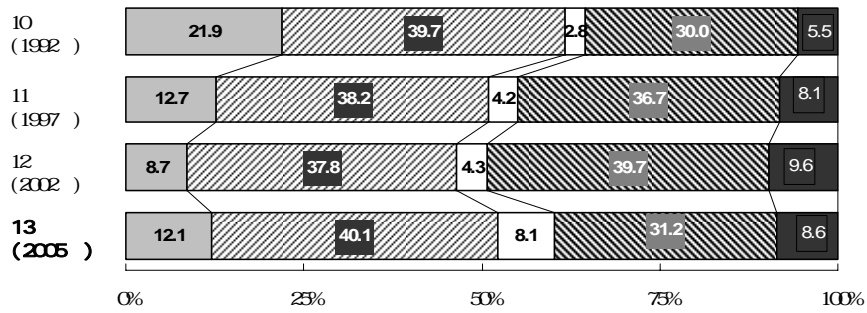
5 9





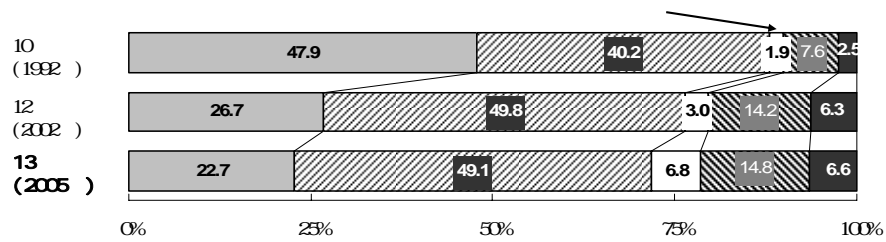
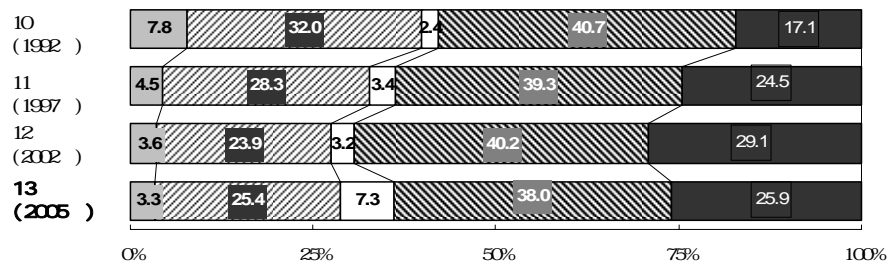
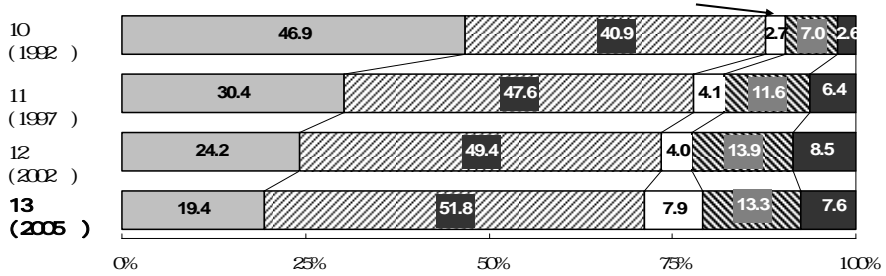
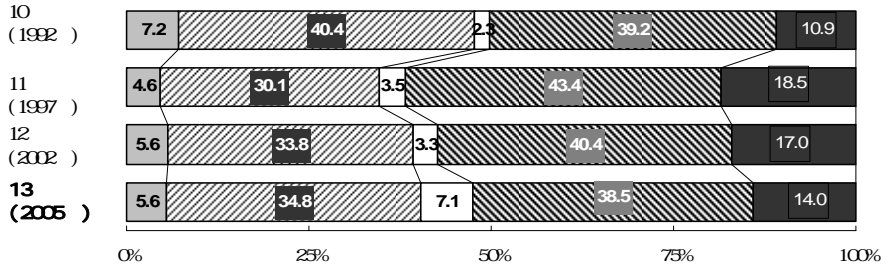
									5.932
	52.2%	12.1	40.1	39.8%	8.6	31.2	8.1%	100.0%	
	68.9	18.9	50.1	24.0	6.4	17.6	7.1	100.0	
	77.2	27.6	49.6	15.4	3.2	12.2	7.4	100.0	
	85.6	39.8	45.8	7.7	1.7	6.0	6.8	100.0	
	81.1	30.7	50.4	11.6	1.2	10.4	7.3	100.0	
	40.4	5.6	34.8	52.5	14.0	38.5	7.1	100.0	
	28.7	3.3	25.4	63.9	25.9	38.0	7.3	100.0	
	71.2	19.4	51.8	20.9	7.6	13.3	7.9	100.0	
	71.8	22.7	49.1	21.4	6.6	14.8	6.8	100.0	
	51.0	12.7	38.2	41.2	12.1	29.1	7.9	100.0	

1992 97



1992

1997



	( )			
1930 39	100.0 % ( 583)	13.4 %	69.0	17.7
1940 44	100.0 ( 556)	14.6	69.1	16.4
1945 49	100.0 ( 960)	21.4	59.8	18.9
1950 54	100.0 ( 992)	33.1	53.9	13.0
1955 59	100.0 (1,275)	36.2	54.0	9.9
1960 64	100.0 (1,578)	41.1	49.8	9.1
1965 69	100.0 (1,819)	48.7	44.9	6.4
1970 74	100.0 (2,078)	61.5	33.1	5.5
1975 79	100.0 (1,485)	66.7	30.4	2.9
1980 84	100.0 (1,519)	72.6	24.9	2.5
1985 89	100.0 (1,547)	80.2	17.7	2.1
1990 94	100.0 (1,312)	84.8	12.7	2.6
1995 99	100.0 (1,474)	87.2	7.7	5.1
2000 05	100.0 (1,182)	87.2	6.2	6.6

(1980 84 ) 10 (1985 89 ) 11 (1990 94 ) 12  
 1995 99 ) 13 (2000 05 )

( )	( )						
(1977 )	100.0 % (1,841)	28.2 %	50.8	20.4	0.7	0.0	
(1982 )	100.0 (1,291)	39.0	42.4	17.9	0.7	0.0	
(1987 )	100.0 (1,408)	31.9	44.7	22.0	1.2	0.1	
10 (1992 )	100.0 (1,521)	38.9	43.4	17.2	0.5	0.1	
11 (1997 )	100.0 (1,273)	42.6	44.7	12.1	0.6	0.0	
12 (2002 )	100.0 (1,468)	40.0	46.6	12.4	1.0	0.1	
13 (2005 )	100.0 (1,062)	38.3	44.7	15.8	1.1	0.0	
(1977 )	100.0 (1,957)	4.2	17.3	61.8	15.2	1.5	
(1982 )	100.0 (1,757)	4.3	16.0	61.1	17.4	1.1	
(1987 )	100.0 (1,608)	4.7	15.0	60.6	18.4	1.2	
10 (1992 )	100.0 (1,549)	8.6	18.1	55.8	15.7	1.7	
11 (1997 )	100.0 (1,276)	10.3	21.0	53.6	13.9	1.2	
12 (2002 )	100.0 (1,325)	10.5	23.6	51.5	13.4	1.0	
13 (2005 )	100.0 (1,233)	11.3	26.7	51.1	10.1	0.9	
10 14 (1977 )	100.0 (1,637)	3.5	11.2	55.5	25.6	4.2	
(1982 )	100.0 (1,642)	2.6	10.2	59.8	24.1	3.4	
(1987 )	100.0 (1,920)	3.4	9.9	58.7	24.3	3.7	
10 (1992 )	100.0 (1,642)	4.8	9.5	51.9	30.1	3.7	
11 (1997 )	100.0 (1,287)	5.5	11.6	54.2	25.2	3.6	
12 (2002 )	100.0 (1,280)	5.0	16.3	52.3	23.2	3.2	
13 (2005 )	100.0 (1,288)	7.6	15.5	51.7	22.3	3.0	

15 ( )

	1925 1929	1930 1934	1935 1939	1940 1944	1945 1949	1950 1954	1955 1959	1960 1964	1965 1969	1970 1974	1975 1979	1980 1984
22.5 27.5						1.00	0.83	0.94	0.81	0.77	0.85	<b>0.89</b>
27.5 32.5					1.70	1.72	1.69	1.43	1.22	1.21	<b>1.09</b>	
32.5 37.5				2.11	2.10	2.09	2.01	1.89	1.73	<b>1.51</b>		
37.5 42.5			2.18	2.19	2.14	2.18	2.13	2.07	<b>1.87</b>			
42.5 47.5		2.22	2.20	2.24	2.15	2.19	2.18	<b>2.01</b>				
47.5 50	2.39	2.20	2.18	2.20	2.11	2.19	<b>2.16</b>					

(1977 ) 13 (2005 ) 13 22.5 22.5 27.5 13

20.5 25.5

13	25	(20)	80.0%		20.0	20.0			15.0	25.0	5.0	5.0	10.0	10.0	10.0	
	25-29	(115)	83.5	6.1	20.0	27.8	4.3	7.8	20.0	20.0	16.5	5.2	13.0	13.0	13.0	
	30-34	(329)	78.7	18.2	24.6	21.9	12.5	10.6	19.8	19.1	18.2	7.0	12.5	11.9	11.2	
	35-39	(464)	75.0	40.1	26.5	17.9	16.4	16.8	17.9	17.0	16.2	8.0	9.7	8.6	8.2	
	40-44	(485)	56.3	52.8	20.8	14.6	21.9	20.4	12.6	10.5	9.7	12.0	7.2	7.2	5.2	
45-49	(412)	51.2	44.9	15.0	13.8	19.7	18.4	9.5	7.5	11.4	7.5	3.4	3.9	9.2		
		(1,825)	65.9	38.0	21.6	17.5	16.9	16.3	15.0	13.8	13.6	8.5	8.3	8.1	8.5	
12	25	(21)	81.0%	4.8	14.3	33.3	23.8		14.3	19.0	19.0	4.8	14.3	14.3		
	25-29	(186)	81.7	7.5	16.7	15.1	11.8	5.4	20.4	13.4	28.0	6.5	8.6	18.3	7.0	
	30-34	(417)	75.5	16.5	25.7	21.8	15.1	12.9	18.0	9.4	27.1	6.2	8.2	17.3	6.5	
	35-39	(525)	59.2	42.1	25.5	18.1	19.0	16.2	16.2	13.5	20.2	12.4	7.0	13.0	6.7	
	40-44	(516)	57.8	40.7	20.3	15.1	23.6	20.5	13.0	12.2	17.1	11.6	6.2	8.9	4.7	
45-49	(469)	53.1	41.4	18.3	14.1	23.0	17.3	9.2	11.9	15.6	8.7	6.8	4.9	4.5		
		(2,134)	62.9%	33.2	21.8	17.1	19.7	15.7	14.6	12.1	20.4	9.6	7.2	11.5	5.6	

100

		( )						
0-4	10 (1992)	100.0%	(678)	18.7%	11.7	6.2	66.7	8.4
	11 (1997)	100.0	(477)	19.3	12.8	7.3	65.6	7.8
	12 (2002)	100.0	(579)	21.8	15.0	7.3	63.0	7.9
	13 (2005)	100.0	(422)	22.0	15.6	6.9	58.3	12.8
5-9	10 (1992)	100.0	(1,314)	21.7	12.7	15.9	52.1	10.3
	11 (1997)	100.0	(1,007)	20.8	11.2	17.8	53.6	7.8
	12 (2002)	100.0	(998)	22.9	13.3	14.5	54.6	7.9
	13 (2005)	100.0	(936)	23.0	12.8	20.3	45.3	11.4
10-14	10 (1992)	100.0	(1,407)	24.2	12.0	27.9	37.4	10.6
	11 (1997)	100.0	(967)	22.1	9.6	35.1	36.7	6.1
	12 (2002)	100.0	(1,034)	23.4	11.6	34.1	36.8	5.7
	13 (2005)	100.0	(1,005)	20.3	11.1	36.0	34.8	8.9
15-19	10 (1992)	100.0	(1,561)	29.7	13.8	39.9	21.7	8.7
	11 (1997)	100.0	(947)	24.4	10.3	41.9	27.3	6.3
	12 (2002)	100.0	(991)	28.4	12.7	43.7	22.7	5.2
	13 (2005)	100.0	(844)	25.0	11.5	46.0	22.6	6.4

( )

( )